



Winter / Spring 2015 Newsletter

142 years caring for animals

www.gspca.org.gg

In this Issue:

GSPCA Events	2
New Build	3-7
Winter Advice	8
Purple Week!	10
Making a lasting difference	13
Animals in need of Homes	14-19
Guided Tours	29
Wildlife	30

We need your help, could you be part of our future?



GSPCA build partner 



Please help us find Bertie, if you see him please call the GSPCA on 01481 257261
www.gspca.org.gg



We have lots of ferrets & rabbits in need of homes



Nala is in need of a home



Forth Coming Events with the GSPCA



- **Monday 9th—Sunday 15th** GSPCA Purple Week—celebrating 142 years caring for animals in Guernsey. Why not help raise funds with a purple theme during our birthday week
- **Tuesday 10th February** Volunteer Induction Evening at the Animal Shelter, 6.30 - 8pm
- **Wednesday 11th February** GSPCA Birthday Themed Bingo at the Market Bistro - £14.50 per adult, £10.50 per child, includes food and 8 games of bingo
- **Saturday 14th February** Sidney's Sponsored Events Invites you to a 1920's St Valentine's Day Mafia Ball at St Pierre Park Hotel—£38 per person
- **Monday 16th - Saturday 21st February** Guided tours at the GSPCA, please call 01481 257261 for details. £5 per adult, £3 per child. Family of four £15
- **Sunday 8th March** Cat First Aid Course 930am—11am only £15 per person
- **Sunday 15th March** Dog First Aid Course 930am—11am only £15 per person
- **Tuesday 17th March** St Patricks Themed Bingo at the Market Bistro - £14.50 per adult, £10.50 per child, includes food and 8 games of bingo
- **Wednesday 25th March** Volunteer Induction Evening at the Animal Shelter, 6.30 - 8pm
- **Sunday 29th March—Thursday 2nd April** Easter Bunny Treasure & Egg Hunt & Fayre at the GSPCA Animal Shelter 11am each day. £10 per child
- **Monday 6th - Saturday 11th April** Guided tours at the GSPCA, please call 01481 257261 for details. £5 per adult, £3 per child. Family of four £15
- **Tuesday 28th April** Superhero themed bingo night at the Market Bistro - £14.50 per adult, £10.50 per child, includes food and 8 games of bingo
- **April—Bereavement training—date to be confirmed**
- **Wednesday 6th May** Volunteer Induction Evening at the Animal Shelter, 6.30 - 8pm
- **Sunday 9th May** Liberation Day Celebrations and fund raiser at the Last Post
- **Monday 25th - Saturday 30th May** Guided tours at the GSPCA, please call 01481 257261 for details. £5 per adult, £3 per child. Family of four £15
- **Sunday 7th June—** GSPCA Fun Dog Show in the Market Square from 11am



For a calendar of events during 2015 please go to

www.gspca.org.gg/fundraising



GSPCA New Build Update



Last edition we announced the start of the first phase of its Rebuild and Redevelopment Plan.

With over 140 years of helping animals in Guernsey and being based at our current location since 1929, the GSPCA provides around the clock care and rescue at the Animal Shelter in St. Andrews.

The Shelter has had many developments over the years moving with the times to help the varied species that come through the door. Some of the structures date back to the 1950s and are becoming difficult to run and maintain. The team at the GSPCA and its Managing Committee have been working hard planning for the future.

The new welfare building will help provide a safe haven for animals like Spot, a tiny kitten found all on his own with no mother in sight just before Christmas near Admiral Park. The young kitten was found terrified and full of worms and fleas, but with the care of the staff at the GSPCA he is now in a new and loving home. Where he has been named Minion and settled very well.

The new building will comprise of a two storey structure that will have multi-purpose use including welfare cattery, quarantine, isolation, animal reception, laundry, electrical substation and more.

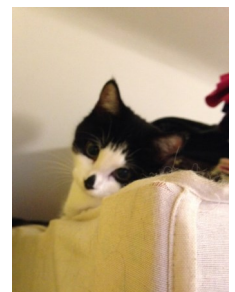
It is without doubt the biggest project we have undertaken at the GSPCA. It is an essential but costly undertaking and to go hand in hand with this project we are launching our exclusive Build Partner programme.

What is the objective of the GSPCA Build Partner programme?

The Build Partner programme is designed to meet the building costs associated with our new £1.3 million multi-purpose animal welfare building. The building is to replace five existing structures that have become unusable with age.

Our new building will incorporate a welfare cattery, quarantine and isolation facilities, and a secure transfer location while also providing logistical and organisational spaces and facilities for the day-to-day running of the GSPCA.

Continued page 4 & 5



Spot now Minion before & after



What is the objective of the GSPCA Build Partner programme?

The Build Partner programme is designed to meet the building costs associated with our new £1.3 million multi-purpose animal welfare building. The building is to replace five existing structures that have become unusable with age.

Our new building incorporates a welfare cattery, quarantine and isolation facilities, a secure transfer location while also providing logistical and organisational spaces and facilities for the day to day running of the GSPCA.

How does the GSPCA Build Partner programme work?

- it is a simple partnership designed to meet the funding requirements for the new welfare building
- 500 individual or corporate partners
- join for a 5 year partnership donating £520 annually

What benefits do I gain as a GSPCA Build Partner?

- the knowledge that you are actively supporting animal welfare and the community
- the first 25 GSPCA Build Partners to register will be entered into a draw to lay the foundation stone
- one Build Partner will be selected by draw to be involved in the topping out ceremony
- V.I.P. invitation to the opening of the new facilities
- exclusive rights to use the GSPCA Build Partner logo
- updates on the progress of the new building
- should you wish, a personal / corporate profile on the GSPCA website
- recognition of your support within the new building if desired

How do I become a GSPCA Build Partner?

- simply complete the Deed of Covenant and Standing Order details and let us take care of the rest



For more information please email buildpartner@gspca.org.gg

A few words why the Insurance Corporation have become a GSPCA Exclusive Build Partner



Here, by your side.



"Through our Conservation Awards, Insurance Corporation has supported local people and organisations that protect our local environment for future generations for over 25 years."

"In this background, it is a logical extension for us to help the GSPCA which does such wonderful work preventing cruelty and promoting kindness to animals."

"As a Channel Islands business with extensive local knowledge and expertise it is really important to us to be a responsible member of our local community."

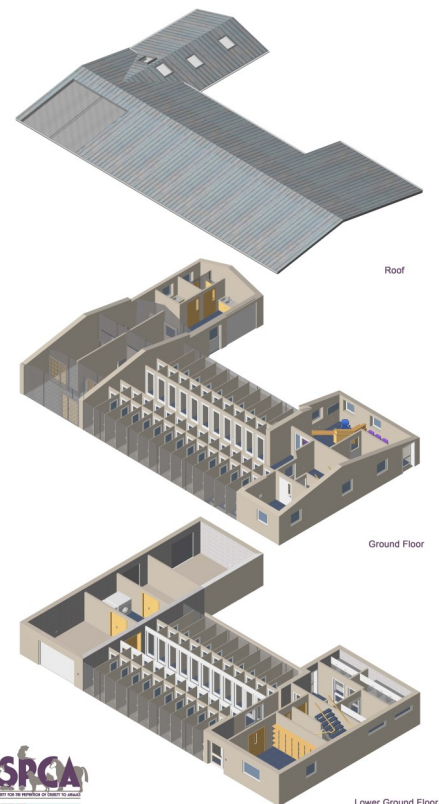
"That means giving something back through our Community Support Programme and looking to work with local causes that are important to our customers, our staff and our broker friends. Guernsey is an island of animal lovers and we salute the role played by the GSPCA in the Bailiwick and wish them every success with their exciting Build Partner Programme."

Glyn Smith, Managing Director of Insurance Corporation

The GSPCA would like to thank Insurance Corporation and all that have already signed up to become a Build Partner, we really do appreciate it and if you or your business could help us look to the future and join our Build Partner programme we would love to hear from you.

For more details about how to become a Build Partner call 01481 257261 email buildpartner@gspca.org.gg or visit www.gspca.org.gg

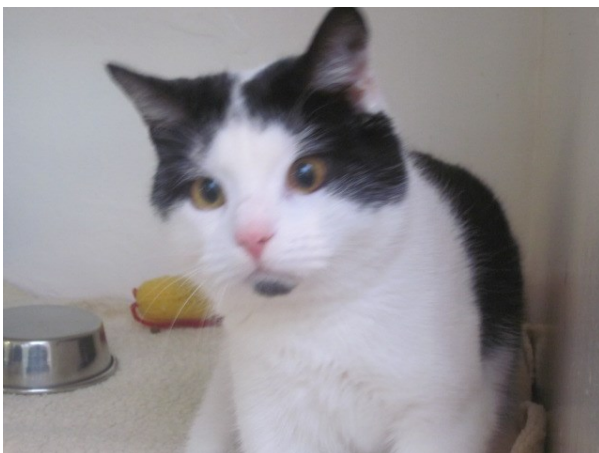
To visit the Insurance Corporation website please visit—
www.insurancecorporation.com



GSPCA build partner

GSPCA Redevelopment Plan

Our new build is underway and much of the steel work in now is up, but we do need your help. It is very exciting to see how quickly the new building is taking shape, and we can almost imagine how it is going to look. We realise there has been some disruption to the site and thank everyone for their patience. The builders are still running to schedule and we hope to have the new building up and running by later this year, but we really need your support in helping us raise funds towards our new build.



Do you remember Indie our very wobbly cat? Indie has now found that forever home

Doretta our longest stay rabbit found a new home just before Christmas



With the fantastic news of the New Build underway we are on the first phase of our 10 year redevelopment plan. If you would like to donate to other parts of the project then here is an easy way to help us plan for the future:

- Via Paypal or the Account Details are:
Bank - **HSBC**
Payee Account - **GSPCA**
Sort Code - **40-22-25**
Account Number - **22076233**
- By calling **01481 257261**
- By filling in the form on our website:
<http://www.gspca.org.gg/blog/gspca-10-year-redevelopment-plans-launched>

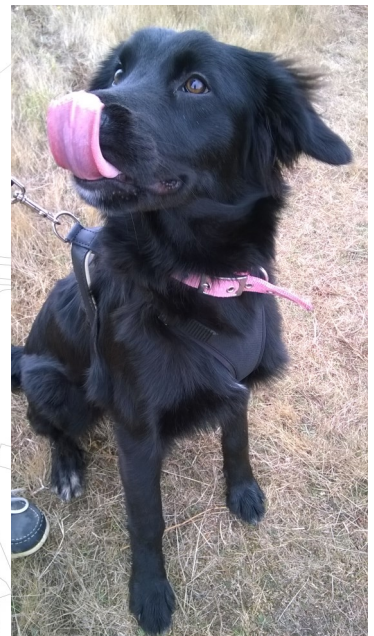


We thank you for all of your support. If you would like any more information on the redevelopment please contact GSPCA Manager Steve Byrne:

stevebyrne@gspca.org.gg, 01481 257261

<http://www.gspca.org.gg/about/our-plans-wish-list>

On our Wish List page you can see a link to our Amazon Wish List which is a great way you can help us care for the animals at the Shelter, as it is full of items that we really need here at the GSPCA.



Winter Advice



Regular readers of our Newsletter will recognise that we have brought you cold weather advice before. As Guernsey people, we are used to relatively mild winters and at the GSPCA we felt it was important to recap a few important points.

There are many ways in which you can help animals during freezing weather. Firstly, by making sure your pets are protected. If you have a rabbit living outside, can the hutch be covered or moved inside for warmth? Are you able to stable your horses, and if not do they have thick rugs? Remember to check your dogs feet after a walk in the snow - especially if you dog has hairy feet where the snow can accumulate.

Animals kept outside during the winter will need extra food, as winter grazing provides very little nourishment. They also need a constant supply of fresh water. Water buckets should be checked and cleared of ice daily.

If you have a pond with fish, make sure you check it every day for ice, as toxic gases can build up in the water of a frozen pond. These can kill fish or frogs that are hibernating at the bottom. If a pond does freeze over you can carefully place a saucepan of hot water on the surface to melt the ice gently to create a hole. Never directly tip boiling water straight onto the pond or break ice with force, as this may harm or can even kill the fish living there.

Wildlife can be affected by the cold as well. We are very lucky to have an amazing selection of birds in Guernsey. In winter, birds may have difficulty finding normal food supplies such as berries, insects, seeds, worms and fruit. An extra tit bit from your kitchen will help to keep them going or you can get a variety of bird feed and feeders at the Animal Shelter.

Most people will know that Hedgehogs will hibernate during the winter. However, if the weather has been mild, it is not unusual for hogs to wake up and look for food. Hedgehogs can get caught out by unusually cold snaps. GSPCA is asking people to try and keep aside a hedgehog-friendly area of garden, leaving welcome heaps of leaves and brushwood that hedgehogs can shelter in. If you do see hedgehogs in your garden, you can also help by leaving food and water out for them. Favourites include minced meat, fresh liver, tinned dog/cat food or biscuits (not fish-based) or chopped boiled eggs.

If you see any wildlife you are concerned about, for example, small hedgehogs, hedgehogs out during the daytime, or any injured wildlife, please call the GSPCA on 01481 257261

We hope this has been some help but any questions please do not hesitate to contact.



Microchipping

Every year we help over 1000 cats from strays to road traffic accidents, welfare calls from concerned public to cats owners can no longer care for.

In 2014 the GSPCA took in 137 stray cats. Of these, 71 were claimed and 66 we unclaimed - that's 48% of the total stray cats that we were unable to trace ownership. Cats often wander away from home and can easily be mistaken for 'lost' cats by members of the public. Microchipping allows us to very quickly identify the cat and their owners. Microchipping also allows us to con-

tact owners if their cats come into the shelter following traffic accidents, or other injuries. This is incredibly important as being able to contact the owners quickly can speed up treatment of the animal.

Mircochipping is a quick procedure, which offers a lifetime of security for your pet. If it is not only cats and dogs who stray and require microchipping. Every year we see stray tortoises, ferrets and rabbits, many of who are never reunited with owners. At the GSPCA we can microchip for only £4.99.



Help find Bertie



Sadly, Bertie is still missing. Bertie initially ran away after being scared by fireworks on 8th November. By nature, Bertie is a nervous dog, especially of men. People are still searching for Bertie and we have had some positive sightings around the L'Ancress and Bordeaux. However, the sightings have not been regular enough to pin point Bertie to a particular area. We need to find out which areas Bertie is frequenting. Ideally, we would like to have some definitive proof that this is the right dog, for example a photo or video. We have placed wildlife cameras in strategic areas and hope that this will give us a better idea of Bertie's movements. Once we know where Bertie is moving, we will be able to set a dog trap, filled with some tasty food. The methods we are using for finding Bertie are the same we used for catch

Slygo, the dog at La Bigard who was catching local chickens! Dogs are very adaptable animals and able to find for themselves in the wild.

We would love to reunite Bertie with his owners as quickly as we can. The GSPCA are still urging people to call the shelter if he is spotted, at any time of day or night on **01481 257261**.

Please do not approach or try to catch him as it is likely to scare him away and will not help with his safe capture. If you do try to approach him he is likely to take off. If he is in a secure area where you can close a gate or door then please do so and call the Shelter as soon as possible.

Bertie's owners have put up a £200 reward for his return.

GSPCA Purple Week!

The GSPCA will be 142 years old on February 14th and we are having a week of celebrations!!

For our birthday party this year, we are holding an Alice in Wonderland themed bingo night on Wednesday 11th February. Tickets for our bingo night are £14.50 per person or £10.50 for children. The party starts at 7pm and includes a buffet food (with vegetarian, dairy/wheat/gluten free options) and 8 games of bingo! In previous games, prizes have reached £100!!



During this week we are also holding a Volunteer Induction Evening. The evening is planned for 6.30 - 8pm, on Tuesday 10th February. Anyone who is interested in volunteering at the shelter will be able to learn a little more about the work we do, and how they can help. We have volunteers who help all over the shelter, from walking dogs to helping with the admin side. Any help we get is greatly appreciated and volunteers are able to specify where they would like to work, which days and how much time they can give. Please come along if you are interested!

Sydney's Sponsored Events are also holding a 1920's Mafia Valentines Ball, which we are really looking forward too! Unfortunately, most tables have now sold, but if you are interested in attending, please contact Corrine on 07911 720469 or corrineconnolly@cwgsy.net and you maybe lucky enough to get a seat!

We are also encouraging you to get involved and think up ways to raise money for the GSPCA with a 'purple' theme! Why not have a purple mufti day? Or a purple cake sale?



Thank you for our Wish List gifts & could you donate a laptop?

Over Christmas & the New Year we had a number of fantastic gifts via our Wish List and from all the team and animals we would like to thank you .

You can see our Wish List on our website www.gspca.org.gg and we also have an Amazon Wish List with items from honey for the hedgehogs to helping towards our New Build.

Two items we would love to appeal for are laptops to replace some of the ageing PC units around site and also a 32 inch flat screen for our reception where we can advertise the animals looking for homes and our events.

If you can help please do get in touch on 01481 257261 or email stevejbyrne@gspca.org.gg



Bingo Nights!



Our themed bingo nights have proved to be very fun nights for everyone involved, and there is the chance of winning the jackpot, which has been up to £100 on some nights!



Our last bingo night was Australian themed for Australia Day! The Market Bistro hosted the event for us and the GSPCA owe them a huge thank you! We had great food and wonderful service all night. Steve Bryne, the GSPCA Manager, dressed up as a kangaroo to call the numbers! The jackpot of £50 was very kindly donated back into the shelter. Every donation, however small, makes a huge difference to the animals on site and this gesture was hugely appreciated.

Coming up, we have our 'Birthday Bingo' with an Alice in Wonderland theme on 11th February, a St Patrick's day bingo on 17th March, a Queen's Birthday theme bingo on 21st April and many more throughout the summer. Please call the GSPCA on 257261 if you would like to book a table for any of the nights. They are great fun, whether you have played bingo before or not!



A huge thank you to the team at OSA Recruitment for allowing us once again to take over their Pop Up Shop in January. Not only is it a chance to raise funds, but we are also able to advertise the animals looking for homes, talk to potential new volunteers and promote our events.

Thank you for your continued support.

To visit their website go to www.osa.gg



**Sidney's Sponsored Events Invites You to a
1920's St. Valentine's Day Mafia Ball
On Saturday 14th February 2015**

GANGSTER & MOLL

**In Aid Of The GSPCA
At St Pierre Park Hotel
6.30pm Until 11.45pm
Music by The Bandits
Tables of 10
£38 Per Person
3 Course Meal
Raffle & Auction
Fancy Dress Desirable
Call Corinne 07911-720469 or
Email
corinneconnolly@cwgsy.net**



St Patricks Day BINGO at the Market Bistro in the Market Building, St Peter Port Tuesday 17th March

£14.50 per person £10.50 for children from 7pm includes Food and 8 Games of Bingo

For a bit of St Patricks Day fun, why not join us in fancy dress (optional) and bring a musical instrument

Menu – Irish Buffet including a Vegetarian and Dairy, Wheat and Gluten free options

To Book your place or table please call [01481 257261](tel:01481257261) or online via our paypal link www.gspca.org.gg

Cash prizes, tombola, raffle and all proceeds helping animals in Guernsey.

Bingo Bash top prizes for the last game have been up to £100.

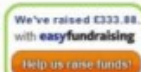
Can seat up to 180, please book your seat by lunch time 17th March

Possible seats on the night but please try and book early

ADDITIONAL BINGO BOOKS CAN BE PURCHASED AT £10 & £5 AT THE INTERVAL FOR THE LAST 4 GAMES



LinkedIn



Making a lasting difference



The GSPCA is a charity that was founded many years ago and wouldn't be able to carry out its animal welfare work without the generosity of our caring and kind supporters.

With rising costs and thousands of animals each year the GSPCA needs your help as we receive no state aid.

You can help us by leaving a gift to the GSPCA in your Will which allows you to continue helping to improve the lives of animals into the future.

After providing for those you care for, please consider leaving a proportion of what remains to us. A gift like this to GSPCA ensures our animals and those in Guernsey will always have someone to keep them safe.

If you have already left a gift in your Will, please contact Steve Byrne on stevejbyrne@gspca.org.gg or call 01481 257261. We can then keep you informed and up to date about developments at the Animal Shelter and our work. We always love to hear that you have left a gift but there is no pressure to say so. We understand that this is a private and personal matter.

Leaving a legacy is not a decision that can be made lightly and we are always happy to discuss this with you or send out additional information.

As a charity, gifts in Wills account for approximately 50% of our total income. We rely on this to continue to give safety and sanctuary to the animals in our care.

We simply couldn't do it without your help and support.

Our charity details are :

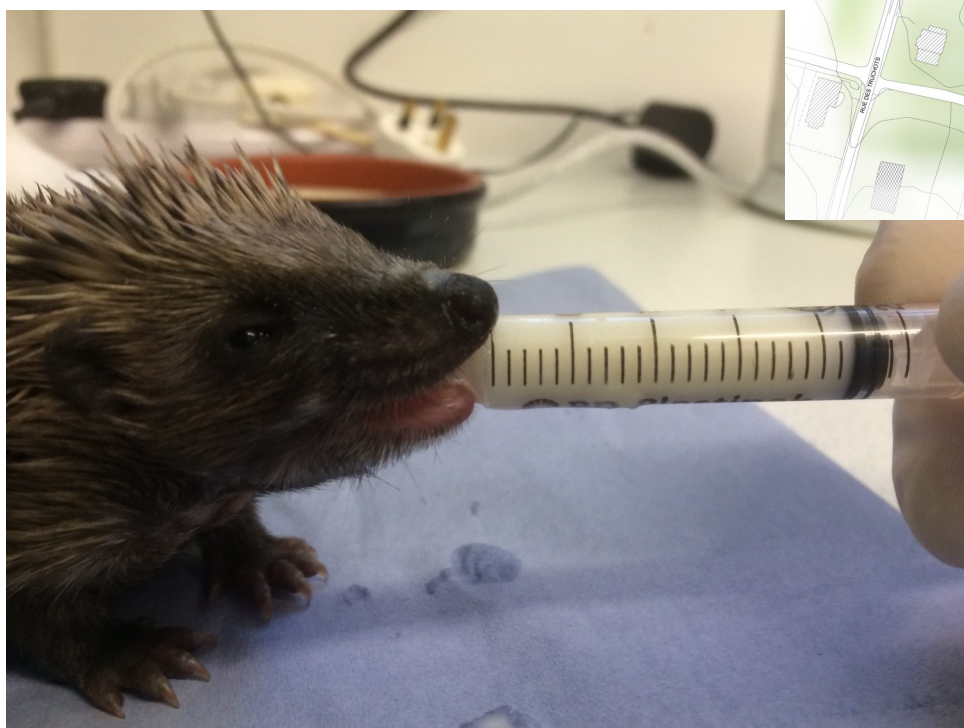
Guernsey Society for the Prevention of Cruelty to Animals,

Rue des Truchots, St Andrews, Guernsey, GY6 8UD

Tel: 01481 257261

Email: stevejbyrne@gspca.org.gg

Guernsey Charity Number: 003



Our 'long term stays'

At the GSPCA we endeavour to rehome all our animals as quickly as we can, however, it does not always work out this way. Some animals have behavioural issues; others do not show themselves very well in the shelter environment due to fear. Many owners would like to be able to take home a friendly, confident addition to their family, but many animals, especially cats, need time to adjust to new surroundings and often hide for days. Over the next few pages, we will show you some of our longer term animals that we could love to be able to place in a home. Although these animals may be more nervous when viewed at the shelter, we believe they will make wonderful pets when placed with the right family.

Nala - 7 years and 11 months; speyed female; 1 year at the GSPCA



Nala is a beautiful cat, with a sad story. Nala was brought into us for rehoming one year ago, as her owner felt they were leaving her for too long and reported her behaviour changing. Nala had started biting and scratching her owner, a behaviour which had seemingly appeared from no where. It is procedure that every animal at the shelter is seen by a vet before they are rehomed. The vets noticed the Nala was showing pain in her back. Staff also noticed that she was behaving very strangely in her pen and mov-

ing with very jerky movements. Following further examinations and x-rays Nala was diagnosed with Arthritis in both stifles and lower back. This could have explained her change in behaviour seen by the owners. When Nala is in pain, she can react by scratching - a cats way of telling you that they don't want to be touched. Nala is currently on a treatment of metacam (a pain killer) and 'easeFlex' (which contains glucosamine for her joints). As we all get older, many of us will suffer with Arthritis in the same way as Nala. We are looking for a quiet home for Nala as an only pet, where she will be able to relax in comfort. New owners will need to continue her treatment and accept that there will be times that Nala does not want to be stroked and picked up. When not in pain, Nala is a lovely cat who like playing with toy mice and being stroked.



Thank you Ailsa Duncan who did the Polar Bear swim on Christmas Day to raise funds to help animals in Guernsey



Honey and Liquorice - approx. 2 years old; 7 months at the GSPCA



Marmalade and Marmite - approx. 2 years old; 7 months at the GSPCA



These four rabbits were brought into the shelter by our Welfare team in June last year. We have paired them up and would like to rehome them in these pairs. May rabbits are kept as only pets, however, this is unnatural for a rabbit. In the wild they live in large colonies in a warren. They are naturally social animals and can develop behaviour problems if kept alone. These pairs have formed very close bonds with each other and would suffer if separated and rehomed individually.

All four of these rabbits have lovely natures. Marmite and Marmalade especially are very relaxed rabbits and happy to be handled. These two came to our Seafront Sunday in town and met a lot of children. They were a big hit!

In order to live happy, healthy lives, rabbits need space to exercise and hide, toys, regular enrichment to keep their minds active, as well as company. Providing these basic needs will ensure you have a happy, contented pet and create a much happier relationship between you and your pet.

Faith and Fayette; Opal; and Oliver - 1 1/2 years old; 6 months at the GSPCA

These are four, neutered Rex rabbits, who came into the shelter in July 2014. They were show rabbits, but the breeder brought them into the shelter for rehoming as he was reducing his stock. The rabbits are currently split into 1 pairs and 2 singles, although we are slowly introducing Opal and Oliver and hope to be able to pair them together. Rabbits love the company of other rabbits and it is very beneficial to keep them in pairs. The company can prevent boredom and unwanted behavioural problems and create a happier, calmer pet. However, just like humans, their personalities have to match!

Rex rabbits are also known as 'The King of Rabbits'. They are now a very popular breed, which originated in France in approximately 1919. Their most special characteristic is their unique fur, which is short, thick and velvet-like. It is the most incredibly soft fur, and very therapeutic to stroke after a hard day at work!

We have spent time handling and grooming all the rabbits at the shelter and these rabbits are all friendly and good to handle. They are lovely rabbits that would make wonderful pets.



Thank to you to all that donated to our New Washing Machine, it is now up and running and doing a wonderful job.



Last month we started repairing kennel flooring thanks to a wonderful grant from last years Channel Island Christmas

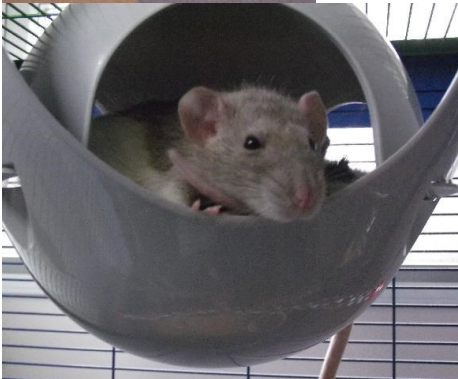
We have many other animals in need of a home... here are just a few of them...



Elsie (15 years) is a friendly old cat, with a lovely loud purr! She is looking for a quiet home. Although she is elderly, she does still like to play, as well as liking lots of attention and company!



Fanta (12 years) is a sweet, older cat. She is very timid and can scare easily, but has come round well to the cattery staff. Fanta came into us as a stray. She has renal problems and needs to be kept on a special diet, but does not need any medication at the moment. We would love to find Fanta a quite retirement home!



Trixie, Dixie and Squeak are three Dumbo rats that are looking for a home! They have formed close bonds with each other, so we will be rehoming them as a triplet. They have all had (and passed) a general health check and are all handle-able! We can provide a cage with the rats, if needed.



Dotty, Poppy and Peppin are three rabbits who came in for rehoming together. They are very friendly and curious rabbits. Here they are checking out a new enrichment toy made by Acorn House Reception. Rabbits form close bonds with each other and we would ideally like to home these three together.



We currently have ferrets at the shelter and on foster, all looking for a home. Ferrets are very trainable animals and can make wonderful pets. We have some lovely ferrets who would make a lovely pet for first time owners, as well as those needing owners with a little more experience. Pictured is Rose, our friendliest ferret on site. Rose loves to meet all the school groups that visit the shelter. Ferrets will also sleep for roughly 18 hours a day and Rose's favourite sleeping spot is inside her crocodile!



Dogs...



Bella (2 year old Jack Russell Terrier) is a very sweet, but sometimes timid, little dog. She enjoys the company of people and enjoys playing with other dogs but does become scared of loud noises. Bella could live with another dog but she cannot live with small furries or chickens/duck as her terrier instinct is too strong and she will chase them. She can live with children if they are able to understand that she sometimes gets scared and needs her space. Bella loves cuddles and will find anyway to get on your knee; she is a good climber and jumper. She is an energetic young lady and would enjoy long family walks and lots of fun outside activities.



Braye (10 year old Jack Russell Terrier) is a friendly little dog who likes company. He is currently being treated for a possible allergy related ear condition so new owners will have to discuss this with staff if they are interested in adopting him. He can live with another dog and older children but he is an older dog so would really benefit from a couple of walks a day and sometime in front of a fire being fussed.



Jessie (7 month old Staffordshire Bull Terrier) is a lively, bouncy, young dog looking for an active family who will enjoy exercising and training him. He is very bright and loves human attention and with some help and guidance will be a fantastic dog. He is very much a bull in a china shop and doesn't really know his own strength or appreciate his own size so he will only be suitable for robust, older children and older confident dogs. Due to his age and likelihood to create mischief if alone he needs a family with minimum leaving hours.



Benji (11 year old Beagle X Collie) is a lovely old boy, who just needs company! He is a sweet dog, who loves to have his tummy tickled! Bengi likes to go for walks, but is quite strong, so does need a relatively fit owner. Bengi can be vocal when left or worried, so would need a house with minimal leaving hours. He will settle and sleep in the house during the day.

When dogs come into the GSPCA we aim to assess and rehome them as quickly as possible. The rehoming team will keep 'dog rehoming applications' for 1 year and contact people if we feel we have a suitable dog. We do urge people who are looking for a dog to send an application into us, regularly check our website and contact us if you see a dog you are particularly interested in.

This year the shelter has been busy trying to find homes for small birds. We currently have nine small, domesticated birds at the shelter. All birds can be brought with cages if they are needed.



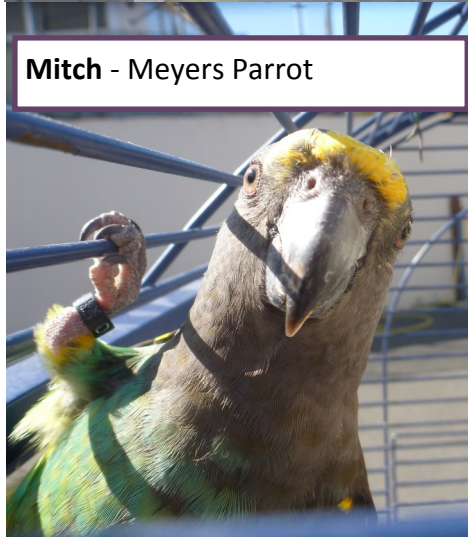
Angel - Cockatiel



Will & Kate
- Budgies



Louis - Senegal
Parrot



Mitch - Meyers Parrot



Bobbin - Zebra Finch



Holly - Cockatiel

Where possible, we aim to re-home all birds to aviaries or free flying environments. We will be able to advise you on the different species and their needs (e.g. exercise and companionship needs).



Twinkle & Sparkle - Budgies

We have more animals available and other arriving all the time. Please visit our website or call the shelter if you are interested in any of them, or would like to arrange a visit.

Taking on any animal is a big responsibility. They require care, attention, time and love.

We urge everyone to seriously consider whether they can provide for an animal and avoid impulse buying.

GSPCA Adoption Charges:			
Dogs	£160	Guinea Pigs	£15
Cats/Kittens	£80	Birds (varied species)	From £12
Rabbits	£29.50	Chickens	£6
Ferrets	£25	Mice/Rats/Hamsters/Degus	£6

Our 'long term stays'

We are delighted to announce that some of our longest stay cats have recently been reserved and found new homes. Here are their stories...

Mitzi - 10 years and 10 months; speyed female; 21 months at the GSPCA
status: REHOMED!



Mitzi was our longest stay cat at the GSPCA. She came into us after her owner passed away. Mitzi has always been a rather independent cat and liked attention on her terms and when she wants it. This behavioural trend made it difficult for us to find the right home for her. The staff have spent a long time getting to know Mitzi and work out what she likes and doesn't like. Luckily, a lovely lady came to have a look at her and decided to give Mitzi a try. She was rehomed early in January, and we have heard that the two are getting on well. Mitzi is able to have cuddles when she likes and enjoy her own space the rest of the time. As much as we miss Mitzi, we hope that we will not see her in the shelter again!

Kenya, is now called Scully - 7 years and 6 months; neutered male; 18 months at the GSPCA

status: REHOMED!

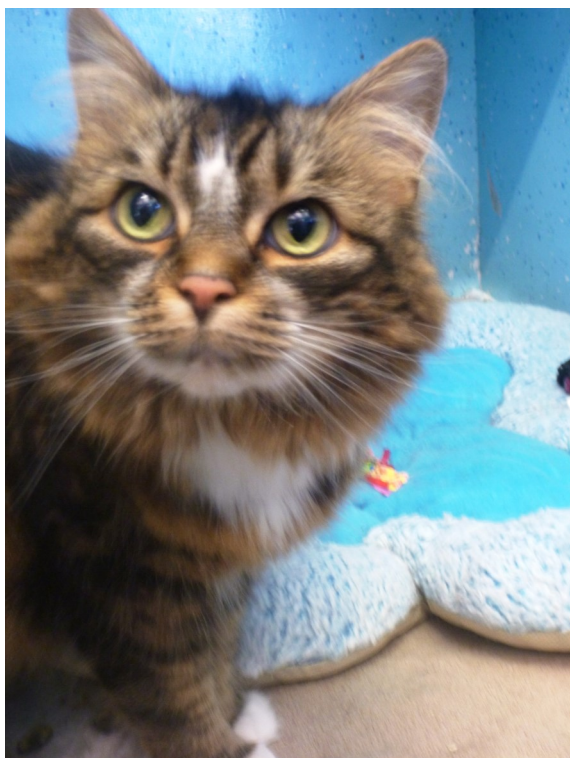


Kenya came into the shelter as a semi-feral stray. He was a very nervous cat when he came in and it took him a long time to come round to people. As Kenya got to know quite a few different people his confidence blossom and he started to enjoy more attention from strangers, as well as those he knew. We were looking for a quiet home only as an only pet with no children (he still finds them very scary). We were very lucky to meet a family who were perfect for Kenya. He went to his new home at the end of January and is now called Scully! It does take a while for cats to settle into a new environment and we are all

hoping that Kenya and his new family will all live happily together for many years to come!

Muji - 7 years and 9 months; speyed female; 14 months at the GSPCA

status: RESERVED!



Muji started life as the usual outdoor/indoor cat. However, she was then moved to a flat and lived as a house cat. She was brought in for rehoming by her owner, who was moving to a new flat and unable to take Muji with her. Initially, Muji did not react very well to the stress of being in the cattery. It is also possible that Muji had developed a few problems due to the stress of being shut in a flat after previously having more freedom. Over time Muji has come to trust the cattery staff and has become a lovely cat. We would like to be able to give Muji the chance to go outdoors and believe that this extra stimulation will continue to help her behaviour. However, after spending so long indoors, she may never be a cat that likes to wander and a house with a secure garden would be perfect for her. Muji will need to be given time to adjust to new surroundings and introduced slowly. Muji has changed from a nervous, aggressive cat to one that enjoys being stroked and groomed. Muji is now reserved by a family with a quiet home, who understand her needs and are willing to work with her to increase her confidence in the world!



Vinnie - 1 year and 6 months old; neutered male; 15 months at the GSPCA

status: RESERVED!

Vinnie came into the shelter as a stray feral kitten. He was found on a vineyard at just three months old. Sadly, Vinnie has been at the shelter for 15 months - that's over 83% of his life! As he came in feral, Vinnie was very unsure of new people and it took a while for the staff to form a relationship with him. Vinnie is now friendly to those people he knows, but still wary of strangers. This results in him not showing himself very well to viewers and other, more confident cats being chosen for adoption. He is a wonderful cat, and one of the most curious cats we have in the cattery. He loves to sit in his pen and watch everything that is going on. Vinnie met a family at the weekend, who, despite his nervous ways, are willing to work with him and give him a chance. To try and give Vinnie the best chance of settling in quickly to their home, they will come to the shelter for a few more meetings so Vinnie becomes familiar with them. We are all keeping our fingers crossed that this is a relationship that will work!

How your Business can help the GSPCA & Corporate Sponsorship

There are many ways in which your business can get involved with supporting the GSPCA and it provides an excellent opportunity for companies to reach out to animal lovers and find an audience that believes deeply in Animal Welfare.

There are many ways to get involved and sponsorship opportunities are available and can be tailored to fit the joint needs and focus of both your company and the GSPCA.

From corporate volunteering opportunities and employee fundraising to sales promotions and sponsorship, there are great opportunities for you and your company to create a mutually beneficial partnership with the GSPCA.

Why choose the GSPCA?

By forming a partnership with the GSPCA your business can provide huge benefits to you and your company including:

- Increasing staff AND customer loyalty when associating with only all Animal Welfare organisation in Guernsey.
- It gives you and your colleagues the opportunity to gain a great sense of pride and achievement through life-changing fundraising challenges.
- Getting your colleagues motivated at work and feeling inspired by giving something good back to society.
- Helping your company achieve CSR objectives and providing engaging content for CSR reports.
- Increasing staff enthusiasm by your company working with such a passionate organisation as the GSPCA and in turn potentially reducing staff turnover.



We need YOU to help us become your company's charity of choice!



Please nominate the GSPCA

If your company has a charity of the year programme, why not speak to your company's charity committee about how to make the GSPCA your charity of choice?

You may be asked by your company to vote for a charity or choose your favourite charity to be on a shortlist. We totally rely on YOU to please put the GSPCA on that list!

By making the GSPCA your company's charity of choice you will also benefit from being associated with only all Animal Welfare organisation in Guernsey.

If you want more information on how you can help the GSPCA become your charity of choice or charity of the year get in touch with Steve Byrne GSPCA Manager
stevejbyrne@gspca.org.gg



Become an exclusive Build Partner

The Build Partner programme is designed to meet the building costs associated with our new £1.3 million multi-purpose animal welfare building. The building is to replace five existing structures that have become unusable with age.

Our new building incorporates a welfare cattery, quarantine and isolation facilities, a secure transfer location while also providing logistical and organisational spaces and facilities for the day to day running of the GSPCA.

Products

If you are a retailer or manufacturer and would like to develop products with us, then please do get in touch.

At the GSPCA we have a range of logo'd goods, collection boxes and counter boxes. If you or your business is interested in helping raise funds through these for the Shelter please email stevejbyrne@gspca.org.gg

Sponsorship of Events

Maybe your business would like to Sponsor all or part of a GSPCA event? The major annual events we hold each year are –

- We hold monthly Bingo Nights at the Market Bistro
- GSPCA Purple Week – February
- GSPCA Mafia Ball - February
- Big Fun Family Lunch - March
- Easter Bunny & Egg Hunt
- GSPCA Cupcake Week – May
- World Stray Day – April 4th
- Summer Fair & Dog Show – June/July
- Animal Welfare Seafront Sunday – September
- GSPCA Animal Awards – Autumn
- World Animal Day – 4th October
- GSPCA Ball - November
- Santa Paws Walk & Christmas Fayre



By sponsoring one of these events we can include your business in promotional material, our supporters newsletter, and online with our web site and social media.

Each year we also look for local businesses to Sponsor runners for the Animal Welfare Seafront Sunday Giant Animal Mascot Race and for more details please go to -

<http://www.gspca.org.gg/page/animal-welfare-sea-front-sunday>

CSR Volunteering

Whether an individual or a group, here at the GSPCA we can provide CSR opportunities for you and your team to help out at the Animal Shelter.

From individual projects to the daily work, events to administration there is something for everyone.

To find out more please go to - <http://www.gspca.org.gg/about/corporate-and-group-days>

Many of the volunteers that have helped through their work place have continued to volunteer at the Shelter during their days off and we are very thankful to them for their support.



If your business has skills or expertise in a particular field and you would like to donate time or resources we would love to hear from you.

Fundraising

There are many ways to raise funds for the GSPCA in the work place. From dress down days to dress up days, issue GSPCA pens to staff to a sponsored event, selling cupcakes for break to a sponsored silence for those chatty staff members.....

If you have a great idea please let us know or have a look at others and download a sponsorship form by going to - <http://www.gspca.org.gg/fundraising>

Wish List & Plans

Maybe your business would like to sponsor something specific to the GSPCA. We have an ongoing page dedicated to much needed items and appeals and you can see these by going to - <http://www.gspca.org.gg/about/our-plans-wish-list>

Membership

As a charity we are made up of members who pay £10 a year to support the work of the GSPCA and for this they receive a number of benefits including a quarterly newsletter.

If your business wanted to join the GSPCA of behalf of your team and be part of the leading animal charity in Guernsey and receive updates and copies of the quarterly newsletter then please contact stevejbyrne@gspca.org.gg

Newsletter & Advertising

We are looking for a sponsor for our quarterly newsletter. If you are interested please email stevejbyrne@gspca.org.gg

We would also like to hear from you if you would like to join us in sponsoring advertising for animals in need of homes or campaigns.

Become an ANGEL

ANGEL is the newly launched animal pen and section sponsorship scheme and if your business is interested in having your business featured on the ANGEL Sponsorship Board in our main car park and help directly towards the many animals in our care please contact stevejbyrne@gspca.org.gg
To see details on the scheme please go to – <http://www.gspca.org.gg/about/angel-sponsorship-scheme-animals-needing-guernseys-everlasting-love>

Talks and Training

If your business would like a talk about the work of the GSPCA or potentially have training needs then please get in touch. To find out a little about our education programme please go to - <http://www.gspca.org.gg/services/education-and-schools>

If your business would like a guided tour of the Shelter then for a donation we can arrange a member of staff to show you around the facilities and talk about the hundreds of animals in our care.

If you would like to discuss how your business can help support the GSPCA then please contact GSPCA Manager Mr Steve Byrne on 01481 257261 or email stevejbyrne@gspca.org.gg





Easter Bunny Hunt at the GSPCA

11am – 12.30pm

Sunday 29th March to

Thursday 2nd April 2015



**Book your child's place to join us
searching and learning about
bunnies around the GSPCA Animal
Shelter in St Andrews with the
Giant Easter Bunny**



**After a bunny treasure hunt
around the GSPCA each child will
take part in an indoor Easter Egg
Hunt Games at the GSPCA**

**£10 per child's place (adults are
asked to stay with their children)**



**Every child will receive a
selection of prizes & eggs**



To book your place please go to -

www.gspca.org.gg

Or call - 01481 257261



'Happy Tails!'

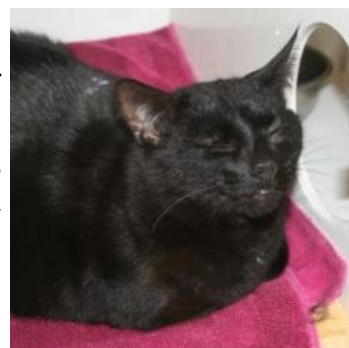




Animals come into the shelter for a variety of different reasons. We need to do the best we can for every animal that comes through our doors. On average it costs £15 to care for a dog, £10 for a cat, £6 for the smaller mammals. By sponsoring an animal pen you can help 1000's of animals that find themselves in the shelter each year.



The GSPCA takes in hundred of cats in each year, both stray cats and those given up for rehoming. Our cattery is a very busy department and usually has a waiting list. We aim to all animals on site as quickly as we can, but occasional we do have animals at the shelter for long periods.



Heather and her kits were an abandoned family of rabbits. Every year we had numerous stray rabbits that are never claimed. Before any of our rabbits are rehomed they will all be vaccinated, microchipped and neutered.



We also need to look after numerous species of wild-life. If this is where your interest lies, why not sponsor a hutch for a hedgehog, or an aviary for rehabilitating birds?



To become an ANGEL, please fill in and return the form which you download online or pop into the GSPCA Animal Shelter or call us on 257261 to post one.

How to Make a Donation

You can make a donation to the GSPCA via any of the following methods:

- Visit the GSPCA website at **www.gspca.org.gg** and donate online via PayPal or Just Giving.
- Visit the Animal Shelter and complete the paperwork on site.
- Make a monthly donation by completing a standing order form (available online or via the GSPCA by calling us on 257261).
- By post to GSPCA, Rue des Truchots, St Andrews, Guernsey GY^ 8UD





There is still time to nominate a person or Charity in the Petplan & ADCH Awards!

If you would like to nominate the GSPCA team, an individual employee or a volunteer, please visit: <http://www.petplan.co.uk/charityawards/>

Alternatively, if you do not have a computer, but would like to nominate a person, or the GSPCA, please pop in and see us and we can give you a form.

The awards are a brilliant way of recognising the fantastic work done by animal charities all over the UK. Winners of the awards also receive a donation for their charity.

The awards are open until February 13th, and the winners will be announced at the ADCH conference on the 22nd April in Bournemouth.



We are delighted to announce that Guernsey has two finalists in the Ceva Awards for Animal Welfare!!



Vet, John Knight from the Vet Care Centres has been nominated in the 'Vet of the Year' Category. As well as being a local vet in Guernsey, John is also the Senior Veterinary Consultant for the Born Free Foundation and the President of the GSPCA Committee! At the GSPCA, we are pleased to work closely with John and will keep our fingers crossed for him as the awards approach.



We are very proud to announce that Yvonne Chauvel, our Senior Animal Care Assistance has been nominated for the 'Animal Welfare Employee of the Year' Award! This is the second time Yvonne has been nominated for an award. Last Year she was a runner up in the Petplan Charity Awards. Yvonne has been at the shelter for nearly 20 years and does a wonderful job of looking after the wildlife and small animals. As well as this, Yvonne is a supervisor on site and manages the many volunteers helping at the GSPCA. Yvonne is a wealth of knowledge and we are very lucky to have her working at the GSPCA.

Guided Tours

We are offering guided tours behind the scenes at the GSPCA. These tours will be running on the following dates at **2pm**:

Monday 16th February
Tuesday 17th February
Wednesday 18th February
Thursday 19th February
Friday 20th February
Saturday 21st February

During the tours you will visit different areas of the shelter, including the cattery, hospital and wildlife units. You will also be able to handle certain animals and see wildlife, such as hedgehogs, up close! Your guide will explain the work we do and the history of the shelter. Each tour will differ from the last, depending on what animals we have on site. We try to make each tour as informative as possible, and give as much hands on experiences as we can.

We are asking for a minimum donation of £5 per person and £3 per child or £15 for a family of four, with a maximum of 15 people per tour. The tours last around 80 minutes.

If you miss out on these tours, or are away, we will be offering more tours during school holidays in 2015. Details will be posted onto our website as they become available.

Enrichment making with Schools!

As well as running public tours, we offer educational shelter tours for school and groups. This year three students from Les Voies School, and 40 students from Acorn House reception have visited. As there were so many students, Acorn House were split into two groups - half were shown around the site (see picture above), while the other made enrichment toys out of recycling for the animals on site. The groups were then swapped over. The students made some lovely toys which were given to the animals over the next week. Making toys out of cardboard boxes and toilet roll tubes is a quick, easy, cheap and fun way of enriching your pet's lives! Here are some pictures of the toys being played with.



Wildlife



This is Frank. Frank is a Common Guillemot who was found by the fairy ring at Pleinmont. Frank was covered in oil. Guillemots hunt by diving to depths of up to 180m for fish. As guillemots spend so much of their time out at sea and will dive if they are scared they are very susceptible to oil in the water. When feathers become covered in oil they cause the bird to lose its waterproof covering. This causes the birds to become very cold. Oil soaked feathers also reduce the birds' ability to float and hunt. In some cases the birds will drown or starve.

Frank, however, was one of the lucky ones who was found. Frank has been at the shelter for almost three weeks. He has had baths and been treated to remove all the oil from his feathers. On February 3rd, Frank was placed on our rehabilitation pond, where he has his first swim. Frank will stay here until we are happy that his wings are watertight and he is feeding by himself. We are very pleased with his progress and look forward to seeing him out on the sea again soon!

Guernsey is visited by guillemots throughout the year. Frank is in his winter plumage. In late spring, Frank's head will become a lovely, chocolate brown colour. We have two colonies of Guillemots breeding in the Bailiwick. One on Les Autelets, off Sark, and another on Longue Pierre in the Humps, off Herm.



This is Stephanie Seagull. Stephanie came into the shelter on 9th January after being found at Mont Cuet with a white material tangled around her leg. She was taken to Route Isabelle vets, the white material was removed and she was put onto antibiotics. After recovering in our aviary, Stephanie has now been released. When Stephanie arrived at the shelter, she was originally called 'Steven'. The gull was already ringed when she arrived at the shelter. From this ring, we were able to find out that this was a 4 year old female, who was born in Jersey!

Herring Gulls, like Stephanie, are found all over the UK throughout the year. Although we see many of these birds in Guernsey they are actually registered on the Red List of Threatened Species by the RSPB. This highlights that numbers of herring gulls are declining at a dramatic rate. To 'qualify' for the Red List, a species must meet the following requirements:

- Globally threatened
- Historical population decline in UK during 1800–1995
- Severe (at least 50%) decline in UK breeding population over last 25 years, or longer-term period (the entire period used for assessments since the first BoCC review, starting in 1969).
- Severe (at least 50%) contraction of UK breeding range over last 25 years, or the longer-term period

So, next time you see a 'seagull' have a little think about what it might be like if we didn't have any sea birds in Guernsey? Or there were no calls of gulls flying across the beaches?



If you are interested in volunteering for the GSPCA, please come along to one of our Volunteer Induction evenings. If you would like more information on the volunteering or fundraising available, please email Steve Byrne: stevejbyrne@gspca.org.gg

VoLuNTeER.Gg
VOLUNTEER IN GUERNSEY

WE'RE QUIETLY LOOKING AFTER PEOPLE, PAWS,
PROPERTIES & PLACES THAT YOU KNOW & LOVE



Pomeranian Leo (re-homed from UK) at Pleinmont, SW Guernsey, where NTG have many miles of cliff path

Leafy lanes, miles of cliff paths, a nursery school, rural woods, fields, rambling farmhouses and cosy cottages - they are all part of what The National Trust of Guernsey looks after and shares with our island community.

The National Trust of Guernsey does all of its work on a voluntary basis. Properties, lands and miles of cliff paths require year round maintenance. We rely on your support, be it by donation or membership.

**IF YOU WOULD LIKE MORE INFORMATION ABOUT OUR MEMBERSHIP SCHEMES FROM
AS LITTLE AS £20.00 PA. PLEASE VISIT OUR WEBSITE WWW.NATIONALTRUST.GG**

Membership gives access to all NT properties & places throughout the UK and many other
worldwide Trusts



Guided Tours at the GSPCA



During February 2015 half term at the GSPCA we will be running a series of guided tours.

This is your opportunity to visit behind the scenes at our Animal Shelter in St Andrews and see the work being carried out for the new build.

We are arranging guided tours on a series of dates at 2pm. We ask for a minimum donation of £5 per person and £3 per child, or £15 for a family of four.

The tours take around 80 minutes and you get to see in many of the departments and a variety of species. Tours are a maximum of 15 people per tour, so please book early.

Some of the animals you will have the chance to see will be cats, rabbits, parrots, hedgehogs, dogs looking for homes and some of the other wildlife.

If you would like a certificate as a gift then please do get in touch for more details

The days and times of the tours are -

- Monday 16th February 2pm
- Tuesday 17th February 2pm
- Wednesday 18th February 2pm
- Thursday 19th February 2pm
- Friday 20th February 2pm
- Saturday 21st February 2pm

Please book your placement early to avoid disappointment.



Here are the dates planned for 2015, if you would like to book now please follow the same guidelines as above.

- Monday 16th - Saturday 21st February 2015 2pm each day
- Monday 6th - Saturday 11th April 2015 2pm each day
 - Monday 25th - Saturday 30th May 2015
 - Monday 20th - Saturday 25th July 2015
 - Monday 24th - Saturday 29th August 2015
 - Monday 26th - Saturday 31st October 2015
 - Monday 28th - Thursday 31st December 2015
 - Saturday 2nd January 2016

If you would like to bring a private group or party to the GSPCA for a visit and tour at the Animal Shelter we can arrange this in advance. We ask for a minimum donation of £5 per person and group sizes from 8 to 16 (restrictions do apply with children to adult numbers).

If you are a school or educational group please visit our website for details. Guided tours of the Shelter take about an hour and it is your opportunity to see behind the scenes, although for animal welfare reasons there are areas that are unable to be viewed.

If you are interested please email stevebyrne@gspca.org.gg or call the GSPCA Manager Steve Byrne on 01481 257261 to discuss details.

To book please call 01481 257261 or online www.gspca.org.gg



142 years helping animals in Guernsey

The Society was founded on Valentines Day 1873 but complete records did not commence until 1919.

On 11th February, 1873, a meeting was convened in the rooms of the Societe Guernesiaise "for the purpose of considering the expediency of establishing in the Island a Societe for the suppression of Cruelty to Animals" and the Dean of Guernsey was called to the Chair. The Patron of the Society was His Excellency Lt. General Froome.

A Society for the Prevention of Cruelty to Animals was thus established on the 14th February 1873 and became known as the GSPCA.

A considerable amount of time in the early days was spent in persuading owners and drivers of horse drawn vehicles to show some consideration for their animals.

Boxcart drivers in the stone trade would haul very heavy loads of granite along unmade roads from the quarries to the cracking yards and to quite considerable distances where new roads and lanes were being surfaced, in most cases drivers were considerate to animals in their charge, but with some Companies animals were worked to their limit.

Butchers roundsmen with a horse and van would leave the shop at 6 to 7am and go on a country delivery round often running as late as 10pm and then having to stable and feed the horse.

Horses and cattle and farms were observed and where required were investigated if cruelty or neglect were involved.

To find out more about our beginnings please visit our website



To join our Angel Pen Pal Sponsorship scheme & sponsor a kennel, cat, animal or wildlife pen please pop in, check online or call 01481 257261



2015 GSPCA Bingo dates

Only £14.50 for adults

£10.50 for children

8 games of bingo & food



Monday 26th January - Australia theme for Australia Day
Wednesday 11th February GSPCA Birthday week with a Purple theme
Tuesday 17th March - St Patricks theme
Tuesday 21st April Queens birthday theme
Tuesday 26th May John Waynes birthday cowboy theme
Monday 22nd June Summer Solstice themed Bingo
Tuesday 14th July Bastille Day Bingo - French theme
Wednesday 26th August Dog Day Bingo
Wednesday 16th September Mexican Independence Day Bingo
Monday 12th October Spain Day Bingo
Monday 30th November St Andrews Day Scottish Bingo



For details please call **01481 257261** or online
www.gspca.org.gg

LinkedIn



Thank you to all that supported the Santa Paws Dog Walk

During a Sunday in December at the Market Bistro and inner market Building the GSPCA and Guernsey Cheshire Home held the first Santa Paws Sponsored Dog Walk and Christmas Fayre.

With a lovely dry morning volunteers and stall holders set up from 9am getting ready for the opening at 11am.

From the Guernsey Cheshire Home cook book on sale to pet Christmas stockings, there was something for all the family and four legged friends.

Dogs started arriving before 11am sporting a lovely array of Christmas jumpers to little elf hats.



Santa was on the door to meet the arrivals with his little helper Katie the westie who had her Christmas outfit on.

At 11.30am nearly 30 dogs gathered in the Market Square where Santa said hello to each of the dogs and judged the best dressed dog.

We choose three first places being Benji with owner Steve, Nellie with owner Aga and Riley with a home made Santa outfit with owner Helen Barker.

Some of the other lovely dogs to take part were Daisy, Katie, Coby, Trixie, Toby, Lucy, Brandi, Bailey, Woody, Scooter, Beaker, Woudrow, Bertie, Chalky and Chas to name a few all of which received a second place rosette.

The walk consisted of a gentle stroll along the front of St Peter Port, through town and back to the Market Square just in time for Beechwood Choir to entertain the crowd.

Shortly after a number of Deputies popped along for the Deputy Dog stocks where members of public for a donation threw balls at some familiar faces.

Steve Byrne GSPCA Manager said "It was lovely for the team here at the GSPCA to join up with the Guernsey Cheshire Home to put on the Santa Paws Sponsored Dog Walk and Christmas Fayre and we had so much fun we are already making plans for next year."

"A huge thank you to the staff at the Market Bistro for all of their help, the volunteers, Beechwood Choir, the Deputies, stall holders and of course all those that supported and joined the walk."

"It was lovely to see so many well dressed and happy dogs on the walk and we had a few familiar faces of dogs that were adopted from the GSPCA."

"Over £500 was raised on the day and we may have more from sponsorship to come in and from all at the GSPCA thank you to everyone for helping make a lovely day."

Thank you to everyone that supported our Santa Paws Dog Walk at the Market Bistro



Thank you to everyone that supported & were involved with the St Andrews Family Fun Day Fund Raiser at the Last Post



Chloe Butt (8) from St Andrews Primary School wins the GSPCA firework safety poster competition with the KGV

GSPCA Staff & Volunteers Winter Certificates of Appreciation

Whenever we receive positive feedback about a staff member or volunteer, and also when the team nominate someone at the GSPCA we award them with a certificate of appreciation and here are those for this quarter -

Staff -

Ian Power—'Kip has done an amazing job refurbishing reception and it looks great'

Kevin Beausire—'Kevin has helped reception look great and he is always willing to help'

Helen Holmes—'Helen does so much for the Shelter and did a great job at the OSA shop'

Tony Gallie—'Tony always works hard and does a great job on dogs'

Sarah Creasey—'We had a really nice visit to the GSPCA with our group and Sarah was lovely'

Terry Buckley—'It is always a pleasure to speak to Terry on reception'

Geoff George—'Geoff really cares and even when he has to help recently bereaved owners he does so in a very caring way'

Sarah Ozanne—'Sarah always seems happy to help anywhere and anyone, thank you to her'

Yvonne Chauvel—'Well done to Yvonne for becoming a finalist in the Ceva Animal Welfare Awards'

Helen Sharman—'Thank you to Helen for my lovely cat'

Anna Paint—'Thank you to Anna for finding me a cat'

Volunteers -

Duncan Cumming— 'Thank you to Duncan who does a great job helping each Monday'

Bridget Henley—'Bridget is always happy to help out and a thank you from everyone'

Matt Hill-Smith & Jenny Bradshaw—'Both are always happy to help and are a fantastic part of the team'

Dave Brook—'Dave is a star'

Natalie Randall—'Nat does so much for the Shelter'

Paul & Anna Duchemin—'Anna & Paul are great'

Corinne Connolly—'Corinne is always fund raising for the Shelter and is a star'

Jackie Le Marchant—'Jackie is a fantastic volunteer and much appreciated by all at the GSPCA'

Sue Digard—'Sue is always happy to help'

John Knight—'Well done to our President John for becoming a finalist in the Ceva Animal Welfare Awards'

Joe Streeting—'Joe is a great help'





GSPCA Dog and Cat Emergency First Aid Training Courses & Volunteer Evenings



The dates for the first aid courses and volunteer inductions are:

Volunteer Induction Evening – Tuesday 10th February – 6.30pm

Cat First Aid 9.30am - 9.30am Sunday 8th March - Ref - Cat 8/3

Dog First Aid 9.30am - 9.30am Sunday 15th March - Ref - Dog 15/3

Volunteer Induction Evening – Wednesday 25th March - 6.30pm

Volunteer Induction Evening – Wednesday 6th May – 6.30pm

Volunteer Induction Evening - Wednesday 630pm 3rd June

Volunteer Induction Evening - Wednesday 630pm 6th July

Volunteer Induction Evening - Monday 3pm 20th July

Volunteer Induction Evening - Monday 3pm 27th July

Volunteer Induction Evening - Wednesday 630pm 9th September

Volunteer Induction Evening - Wednesday 630pm 30th September

Volunteer Induction Evening - Wednesday 630pm 14th October

Cat First Aid 9.30am – 9.30am Sunday 8th November 2014 - Ref - Cat 8/11

Dog First Aid 9.30am – 9.30am Sunday 15th November 2014 - Ref - Dog 15/11

Volunteer Induction Evening – Wednesday 26th November– 6.30pm

All first aid courses are a minimum £15 donation and you must book your place by the Saturday before the training session.

Volunteer evenings are free to attend but we do encourage all volunteers to join the GSPCA which is only £10 a year

Within the sessions you get the chance to learn about what to do if you were faced with an emergency situation with your dog or cat. All participants receive handouts, a few goodies and surprises.

To book your place call 01481 257261 or via the paypal link on the web page using the reference code so we are aware which you would like to attend.

www.gspca.org.gg



GSPCA Goods on sale



The GSPCA sells many items on site and in our online shop:

<http://www.gspca.org.gg/shop>

The Online Shop has a number of GSPCA branded goods from tops to teddy bears. You can click and collect the items or we also have delivery options for both Guernsey and the UK (for other overseas options please contact us via email).

We also sell more practical goods in our reception area on site, including toys, treats, crates, dog beds, bird feeders and hedgehog houses! Please pop in and see us, or call us on 257261 if you are looking for something specific!

If you would like to buy something for the animals on site, please check out our Amazon Wishlist. We are looking for a range of items, from cheap food bowls, to more expensive specialised food for sick or elderly animals. We appreciate every gift given. It all helps the shelter run smoothly!

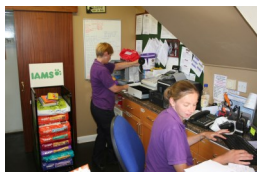


my wishlist
amazon.com

GSPCA Reception's New Look!

Kip and Kevin, our maintenance staff, have been very busy creating a new reception area at the GSPCA! We have removed the old desks and replaced this with a second hand desk from KPMG's office move. The result is that customers now have a lot more space to look at shop good, read the notice board and wait for member of staff. We are still putting some finishing touches to the area, so please bear with us, but we are very please with how it is looking!

From—



To -



GSPCA Membership as a Gift



For only £10 a year you can join as a GSPCA Member and be part of one of the oldest charities in Guernsey. We can also arrange Membership as a gift on request.

As a member you will receive our newsletter four times a year and be invited to attend our Annual General Meeting. During our AGM we present awards to those people who have helped us during the year.

www.gspca.org.gg/about/gspca-membership

Rossborough are in partnership with the GSPCA to protect Guernsey pets

For each policy inceptioned Rossborough will donate £10.00 to the GSPCA.



Each plan provides:

- Up to £4000 Vet's Fees cover
- Death
- Boarding Fees
- Holiday Cancellation
- Loss/Theft/Straying
- Advertising Reward
- Accidental Damage
- Personal Accident
- Public Liability
- No excess (except on Vet's Fees)
- 10% Introductory discount

10% multi-pet discount

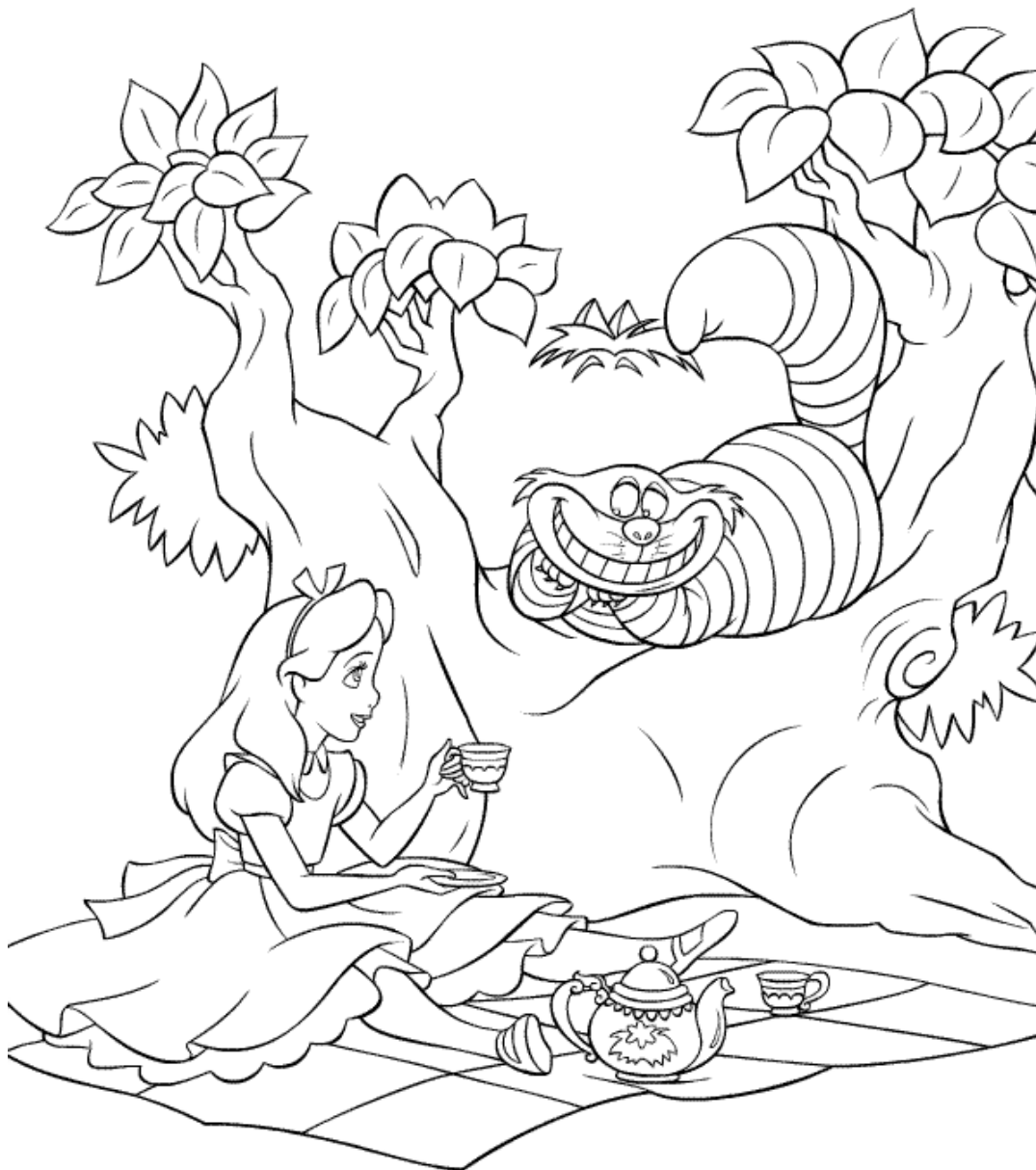


How to apply online: www.rossborough.co.uk and click on the Pet Insurance link

Alternatively you can call our office on 01481 241555

Rossborough Insurance is a trading name of R A Rossborough (Guernsey) Limited. R A Rossborough (Guernsey) Limited is licensed by the Guernsey Financial Services Commission. Registered in Guernsey No. 2873. Registered Office: Rossborough House, Bulwer Avenue.

This product is underwritten by The Equine and Livestock Insurance Company Limited © 2014. Thorpe Underwood Hall, Ouseburn, York. YO26 9SS (registered in England and Wales no: 294940) which is authorised by the Prudential Regulation Authority and regulated by the Financial Conduct Authority and the Prudential Regulation Authority no: 202748.



**Can you
colour in this
picture of
Alice enjoy-
ing a tea
party with
the Cheshire
Cat?**

We are offering advertising for your business or companies in our newsletter. The prices are:

1/4 page spread: £40

1/2 page spread: £80

Other rates are negotiable!

If you are interested, please contact Steve Byrne on: **01481 257261** or stevebyrne@gspca.org.gg



**Thank you to NASH Copy
who provide the printer
for our Newsletter**



Guernsey Society for the Prevention
of Cruelty to Animals,
Les Fiers Moutons,
St Andrew,
Guernsey, GY6 8UD
Phone: 01481 257261
Fax: 01481 251147
www.gspca.org.gg



**Thank you for
your continued
support.**