

With more than 145 years caring for animals in Guernsey, the GSPCA is growing to meet the demands of the modern world with enthusiasm, optimism and energy. The role now, as in the early days of preventing cruelty & promoting kindness to animals, through education, is as strong as ever.

So much is achieved through qualified & dedicated staff, our own welfare officers, friends and supporters throughout the island.

If you Buy a Brick for the proposed new Wildlife Hospital you can help us to achieve the first ever facility of its kind in the Channel Islands.

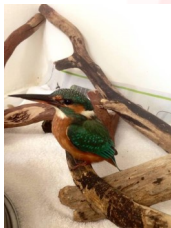
Without your support, donations and legacies we wouldn't be able to help 1000's of animals every year. T

This is Adele the Grebe who was found covered in oil and without your support the GSPCA wouldn't be here to help care for the 1000's of wild animals and birds we have brought into the Shelter that are found sick and injured every year.



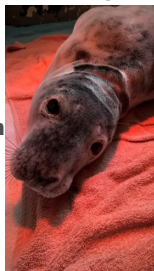
Topsy the hedgehog is one of the many hedgehogs brought in injured from garden machinery. Topsy was thankfully very lucky and was released after two months of treatment.

Eden and Trinity were 2 grey seal pups that were found on our coast close to death. We rescued, rehabilitated and after 3 months of intensive care were released off of Jethou.



Deborah Kerr the kingfisher was found in Guernsey and if she hadn't been rescued and placed in an intensive care unit she would not have made it back to the wild where she belongs.

This is Temperance a Guernsey seal pup rescued November 2017 at Beaucette Marina and needing your support to help with his care and others like him to get back to the wild where they belong



Each year at the GSPCA we rehabilitate, rescue, care for hand rear and help over 2000 wild animals every year.



Many of the animals arrive at the GSPCA sick or badly injured and need weeks or even months of care.

With many over our buildings dating back nearly 70 years and extremely difficult to maintain the GSPCA focus is on a new Wildlife Hospital.

Could you Buy a Brick or help sponsor a room to help this dream become a reality and help the wildlife of Guernsey and our surrounding islands and water.



Contact Us

GSPCA Animal Shelter, Rue des Truchots, St Andrews, Guernsey, GY6 8UD

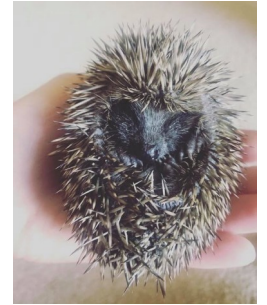
email: admin@gspca.org.gg

Visit us on the web:
www.gspca.org.gg

Tel: (01481) 257261



Buy a Brick & help the GSPCA Wildlife Hospital become a reality



Help build a brighter future for the wildlife of Guernsey.

Buy a Brick & be part of the first ever Channel Island Wildlife Hospital

www.gspca.org.gg

