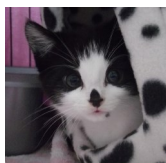


With more than 142 years caring for animals in Guernsey, the GSPCA is growing to meet the demands of the modern world with enthusiasm, optimism and energy. The role now, as in the early days of preventing cruelty & promoting kindness to animals, through education, is as strong as ever. So much is achieved through qualified & dedicated staff, our own welfare officers, friends and supporters throughout the island.

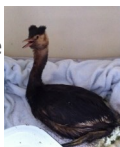
If your business, company or group becomes an Angel Pen Pal Sponsor you will receive quarterly newsletters for your team with an advert for your business included, a page on our website, GSPCA car stickers for your team, GSPCA pens, a framed certificate, GSPCA membership, a large plaque & also be part of an organisation that helps animals and the local community in Guernsey every day.

Without your support, donations and legacies we wouldn't be able to help 1000's of animals every year.



Spot the kitten was found very young, feral, full of worms, fleas and no mother in sight. After care and attention Spot is now called Minion and living in a new and loving home.

This is Adele the Grebe who was found covered in oil and without your support the GSPCA wouldn't be here to help care for the 1000's of wild animals and birds we have brought into the Shelter that are found sick and injured every year.



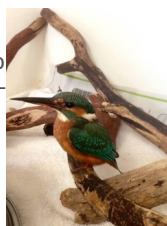
Topsy the hedgehog is one of the many hedgehogs brought in injured from garden machinery. Topsy was thankfully very lucky and was released after two months of treatment.



Sherbert is one of many dogs that found her way into the Shelter. After an assessment and short stay at the GSPCA she is now living a wonderful life.



Eden and Trinity were 2 grey seal pups that were found on our coast close to death. We rescued, rehabilitated and after 3 months of intensive care were released off of Jethou.



Deborah Kerr the kingfisher was found in Guernsey and if she hadn't been rescued and placed in an intensive care unit she would not have made it back to the wild where she belongs.

Each year at the GSPCA we rescue, rehome, rehabilitate wildlife, investigate cruelty calls and reunite over 3000 animals.



It costs over £600,000 a year to run the GSPCA & we are desperately fund raising to rebuild much of the Animal Shelter. By becoming an Angel Pen Pal Corporate Sponsor you can help us provide the care & rescue work 24 hours a day 7 days a week & help us provide a much needed service for the local community.

As well as their daily care we need to neuter, deflea, worm, feed, microchip, medicate, vaccinate, treat & see to other needs of the many animals in our care.

Every day animals arrive & are recued by the GSPCA sick or badly injured & we really need your support.

## Contact Us For More Details



GSPCA Animal Shelter, Rue des Truchots, St Andrews, Guernsey, GY6 8UD

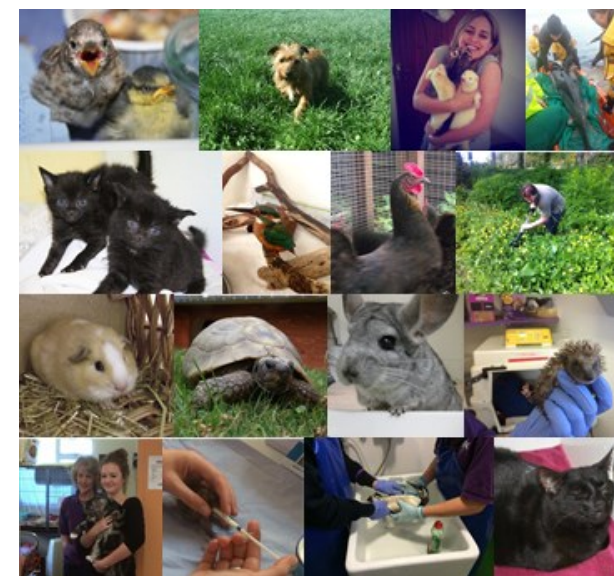
Tel: (01481) 257261  
email: [stevejbyrne@gspca.org.gg](mailto:stevejbyrne@gspca.org.gg)

Visit us on the web: [www.gspca.org.gg](http://www.gspca.org.gg)



# Corporate Sponsorship

Support animals each month in Guernsey through a donation or by monthly giving



Could your business sponsor a kennel, cat pen, rabbit run, ferret run, hedgehog unit or wildlife section

[www.gspca.org.gg](http://www.gspca.org.gg)

We would like to become a GSPCA ANGEL Pen Pal Corporate Sponsor.

When completed please return to – GSPCA Animal Shelter, Rue des Truchots, St Andrews, Guernsey, GY6 8UD

We would like to become a: (please tick)

**Bronze Angel Pen Pal Corporate Sponsor:** ☐

**Minimum sponsorship £100 per year**

**Silver Angel Pen Pal Corporate Sponsor:** ☐

**Minimum sponsorship £500 per year**

**Gold Angel Pen Pal Corporate Sponsor:** ☐

**Minimum sponsorship £1,000 per year**

**Platinum Angel Pen Pal Corporate Sponsor:** ☐

**Minimum sponsorship £10,000**

**Diamond Angel Pen Pal Corporate Sponsor:** ☐

**Minimum sponsorship £50,000 per year**

**Titanium Angel Pen Pal Corporate Sponsor:** ☐

**Minimum sponsorship £100,000 per year**

**Each of the sponsorship levels receives increased benefits. For more details please phone or email.**

If specifically for a species please circle:

**Dogs   Cats   Seals   Rabbits   Wildlife   Ferrets**  
**Birds   Hedgehogs   Wild Birds   All species**

You can donate online with Paypal via our website [www.gspca.org.gg](http://www.gspca.org.gg)



Your company contact details (please use block capitals):

<b>Title:</b>		<b>Contact Name:</b>	
<b>Company Name:</b>			
<b>Address:</b>			
<b>Telephone No:</b>		<b>Post code:</b>	
<b>Email address:</b>			

(by providing us with your email/telephone number you are giving permission for the GSPCA to contact you by these means with the GSPCA Sponsor Scheme Information)

If you could indicate the wording you would like on your plaque and please email a company logo -

<b>Company Name:</b>	
<b>Message:</b>	

**Bank Details** - I enclose a cheque/postal order or would like to make a donation of £\_\_\_\_\_ p (made payable to 'GSPCA')

**To pay by credit/debit card, please complete your details & amount above & your card number below.**

Expiry date

--	--	--	--

Valid from:

--	--	--	--

Delete as appropriate —Access / Visa / Mastercard / Maestro

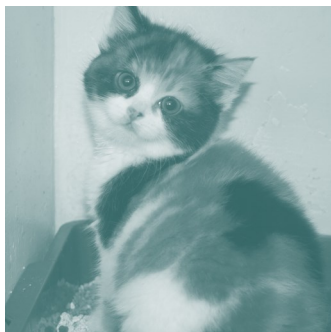
Card No:

--	--	--	--	--	--	--	--	--	--	--	--	--	--	--

Issue no. (Maestro)

--	--

**To make a regular standing order donation please complete your details here:**



To The Manager:		Please Pay:	
Your Bank:		Payee Bank:	<b>NatWest</b>
Your Bank Address:		Payee Account:	<b>GSPCA</b>
		Payee Sort Code:	<b>60-09-20</b>
		Payee Account:	<b>06013740</b>
		Payment:	
		Frequency:	
Account No:		Date of 1 <sup>st</sup> payment:	
Sort Code:		Reference:	
Signature:			
Print Your Full Name:			