



# Newsletter

[gspca.org.gg](http://gspca.org.gg)

GSPCA Jan 2016

Do you  
recognise  
these  
faces?

## IN THIS ISSUE

GSPCA Events - page 2

Dog Training Classes - page 3

Seafront Sundays - page 4

Purple Week / A la perchoine  
page 7

Changes at the Shelter -  
page 8

Christmas Events - page 9

Masquerade Ball - page 10

Shop online - page 11

Guided tours - page 12

First Aid / ANGEL design an  
advert - page 13

Animals looking for homes -  
page 16

Flag day - page 18

How your business can help  
- page 19

Atlantic grey seals - page 21

Vacancies / Redevelopment  
plans - page 22

Rossborough insurance -  
page 23

Bingo night - page 24

## The Slovakian puppies



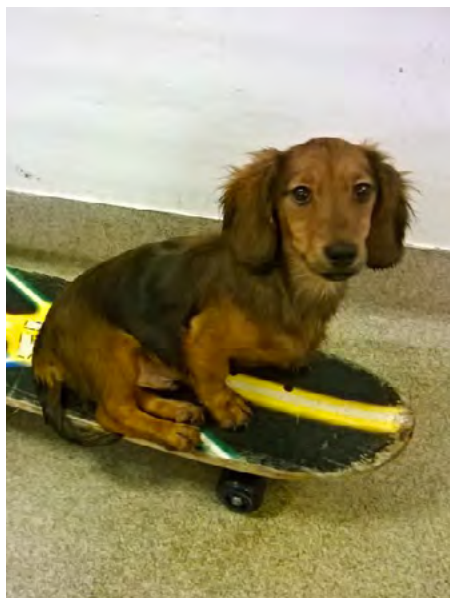
As you will have read in our latest magazine, on our website or in the paper, the staff at the GSPCA had their hands full when 25 puppies were confiscated at the docks and brought up to the shelter! Not only did we have the challenge of feeding, cleaning and providing medication to the pups, but we also had to teach them about the



GSPCA



@GSPCA



outside world and socialise them with as much as we could. The dog training team at the GSPCA worked hard to ensure what while the puppies were in kennels they saw and heard as much as possible. We introduced them to grass, bubble wrap, skateboards, the sound of fireworks and sirens, fluorescent jackets and even space hoppers! Anything that would get their mind thinking and prepare them for the sounds and sights of life outside of the kennels.

Eventually, all our hard work paid off and we were given the ok to rehome the puppies. They are all now in local homes and have been attending the GSPCA puppy training.

All the puppies have done exceptionally well and we could not be more proud of the puppies and their owners! We are hoping to have a reunion in the new year, so watch out for more pictures of the pups as they grow!



- Tuesday 2nd February Volunteer Induction at the GSPCA, 6.30pm
- Monday 8th - Sunday 14th February GSPCA Purple Week - celebrating our 143rd birthday!
- Monday 22nd - Sunday 28th February GSPCA Guided Tours at 2pm (£5 - adults; £3 - children; £15 - family of 4; please call the shelter to book)
- Tuesday 1st March - Welsh Cake Sale - details to follow
- Thursday 3rd March Volunteer Induction at the GSPCA, 6.30pm
- Saturday 19th & Sunday 20th March Easter Bunny Treasure Hunt and Tour (£15 per child; please call the shelter to book)
- Saturday 25th & Sunday 26th March Easter Bunny Treasure Hunt and Tour (£15 per child; please call the shelter to book)
- Friday 1st April Masquerade Ball at The Farmhouse
- Thursday 7th April Volunteer Induction at the GSPCA, 6.30pm
- Monday 11th - Saturday 16th April GSPCA Guided Tours at 3pm (£5 - adults; £3 - children; £15 - family of 4; please call the shelter to book)
- Tuesday 10th May Cat 1st Aid Course, 6.30pm - 7.30pm (details to follow)
- Sunday 15th May Seafront Sunday
- Tuesday 17th May Dog 1st Aid Course, 6.30pm - 7.30pm (details to follow)
- Monday 16th - Sunday 22nd May GSPCA Cup Cake Week!
- Monday 30th May - Saturday 4th June GSPCA Guided Tours at 3pm (£5 - adults; £3 - children; £15 - family of 4; please call the shelter to book)

**Lots more going on and other events coming up...**

**To book a place on any of the above events, or if you are interested in helping on one of our stalls, please call the GSPCA on 257261**



# The GSPCA Dog Training Classes



## The GSPCA teach Good Companion Dog Training

The Good Companion Award is the Association of Pet Dogs Trainers' (APDT) equivalent to the Kennel Club Good Citizen Award Scheme. The main difference between the two is that we will examine you and the dog as a pair; it is not solely about the dog's performance. Also, as members of the APDT, we choose to only acceptable training methods as set out in the APDT Code of Ethics.

For more information on the APDT please visit [www.apdt.co.uk](http://www.apdt.co.uk)

Some of the things we will be looking for:

- Appropriate greeting behaviour
- Good lead walking
- A good recall
- Basic commands 'on cue' such as a down, stand, sit
- Food manners
- Calm walking through doors
- Play manners
- Good owner focus and response



**But primarily the way the owner responds to the dog is the key element.**

The GSPCA runs these courses in 6 week blocks and each class lasts for approximately an hour (give or take). They are currently held at the shelter on a Tuesday or Thursday evening at 7pm and Wednesday morning at 10.30am. Throughout the year extra courses may be added if trainers are available. The whole course costs £50 and there is a maximum of 6 (or on a rare occasion 7) dogs per class allowing us to give you lots of individual attention. All puppies must have had their second vaccinations before they can begin the course. It is desirable for the puppy to have a week between its vaccination and starting the course but you should discuss this with your vet as sometimes starting a day or two earlier is ok as all puppies are vaccinated. We do also run classes for older dogs.

Lorna Prince and Jenny Mahy take the classes with a team of qualified helpers, all of whom are members or working towards being members of the Association of Pet Dog Trainers (see [www.apdt.co.uk](http://www.apdt.co.uk) for more information).

We use positive reinforcement training methods; utilising the clicker for some of the exercises to facilitate fast results. We do not punish dogs by lead jerking or forcing into position as this has a negative effect on their learning experience and your bond. The dogs are motivated to learn because they find it rewarding NOT because they are trying to avoid a punishment or correction.



As well as teaching a mix of basic commands, walking nicely on lead, and a recall for example we try to demonstrate activities that owners can do with their dogs to help build and strengthen their bond and provide natural stimulation and enrichment for their pets.

We continually assess each dog and give out advice about any behaviour problems owners may be experiencing. Our aim is that people leave the classes with a greater understanding of their dogs and why they do things. We hope that owners will learn to handle their dogs with a deeper understanding and compassion and be able to work with them should problems arise.

As we have so few dogs in each class the places are allocated on a first come first served basis – only confirmed on receipt of payment. Please collect an application form if you would like to enrol on the next courses.

### Why do we use clicker training?

Clicker training is a positive-reinforcement training method based on operant conditioning. It uses the clicker as a marker to tell the animal precisely what it was doing right at

that point in time. It provides a simple and clear signal to the dog. Behaviours marked by the click, and therefore reinforced, are more likely to happen again.

This method works because you pair the click with a reward. The click therefore becomes rewarding in itself. The dog starts to work to hear the click. As the dog is working to get his 'click' from you he is focusing on you and not everything else in his environment resulting in calmer behaviour as he tries to work things out.

The premise of clicker training is simple – you see the behaviour, you mark it with a click and you reward

the behaviour. It is crucial that the click is followed by the reward. When teaching new behaviours your dog must have 100% faith in the click = reward.

Clicker training uses the dog's own natural learning process and simply adds to it a signal of reward. This gains full cooperation even from the most difficult dog without the use of force. By then putting the training on a random reward schedule this is one of the most successful training approaches you can use.

#### **Why doesn't punishment work?**

The use of punishment can have many negative effects on your dog, including:

- Increasing the dogs fear or anxiety about the situation in which it is used
- Decreasing the dog's ability to learn
- Associating other, coincidental events with a fear provoking event
- Inhibiting behaviour, but leave the underlying problem unchanged, therefore increasing the chance of future problems
- Creating new behaviour problems
- Causing confusion as to which behaviour is required
- Causing physical injury

***Why train using punishment when there are kinder, more effective training methods available?***

## The Seafront Sundays 2015

There were eight Seafront Sundays in 2015 and the GSPCA had a stall at every one! The GSPCA relies solely on donations and fundraising, so these events go a long way to helping raise the £2000 a day we need to run the shelter. Our stall also give us a chance to meet and talk to locals and visitors about the work we do. We thoroughly enjoyed all the Sunday's and raised a fantastic £8000 over the eight days!

Our own Animal Welfare Seafront Sunday is the biggest event of the year for us. This year we took over the town seafront on the 13th September and managed to raise an incredible £3500!! A massive thank you to everyone to attended and played on the tombola or dropped a pound in the collection pots. We would also like to extend another



thank all the volunteers that helped make the day possible.

Steve Byrne, the GSPCA Manager said "From all at the GSPCA we would like to thank everyone that was involved in organising the Seafront Sundays and helped with our stall on all 8 days, including our own Animal Welfare Seafront Sunday. We met some amazing people from locals to those living abroad interested in what we do at the GSPCA. We met volunteers from the RSPCA in the UK to volunteers from American cat rescues, we sold GSPCA Guernsey tops to visitors from France to the U.S. and every event was a joy to

attend with plenty to do."

We had so much fun at our Seafront Sunday this year. There were a few surprises, such as Olaf the Snowman judging the Dog Show (unfortunately some of the dogs weren't too sure what to make of the giant snowman!) and the Giant Mascot Race was hilarious, as usual! It's not every Sunday you get to watch a lion race a crab in a sack race!

Despite the slightly grey weather, the crowds stayed till the end, enjoying the live music put on by the Green Men. Over the next pages are some pictures of our Animal Welfare Seafront Sunday.



Our next  
Seafront Sunday  
will be  
**15 May 2016**

Please get in touch if you would  
like to be involved! We are  
hoping to make the day  
bigger and better  
than ever





Our next  
Seafront Sunday  
will be

**15 May 2016**

Please get in touch if you would  
like to be involved! We are  
hoping to make the day  
bigger and better  
than ever



## SEAFRONT SUNDAY ANIMAL GIANT MASCOT RACE APPLICATION

### General Information

Contact

Name: \_\_\_\_\_

Contact

Address: \_\_\_\_\_

Post Code: \_\_\_\_\_

Email: \_\_\_\_\_

Telephone: \_\_\_\_\_

Fax \_\_\_\_\_

Other \_\_\_\_\_

If representing a charity or business please include details

Charity /

Company: \_\_\_\_\_

Address: \_\_\_\_\_

Post Code: \_\_\_\_\_

Telephone: \_\_\_\_\_

Fax \_\_\_\_\_

Other \_\_\_\_\_

Email: \_\_\_\_\_

### Giant Mascot Race Information. Tick as appropriate –

Single Race ☐

Team of 4 ☐

(No minimum donation this year)



Name of Runner or

4 Runners if team: \_\_\_\_\_

Charity: \_\_\_\_\_

Yes / No

Business \_\_\_\_\_

Yes / No

Other

Please specify \_\_\_\_\_

All proceeds will help animals in Guernsey and the work of the GSPCA

The race will take place along the sea front and will start at 2pm. We ask all runners to meet at the Tourist Information Centre. Depending on numbers there potentially could be heats.

This is an animal themed fancy dress fun race in teams of four or single race.

Please contact us for which animal suit / suits you would like, or if you are providing your own



Please return all applications to: Steve Byrne, GSPCA Manager  
GSPCA Animal Shelter, Rue des Truchots, St Andrews, Guernsey, GY6 8UD

Email - [stevebyrne@gspca.org.gg](mailto:stevebyrne@gspca.org.gg) Tel - 01481 257261

# GSPCA PURPLE WEEK 143

Mon 8 - Sun 14 February

Once again our birthday is coming up and on the 14th February the GSPCA will be 143 years old (we think we look pretty good for our age!)

Although the GSPCA was formed and started investigating cruelty, mainly to farm animals and working horses, in 1873, it was not until 1919 that the first home for stray dogs and cats was set up in St Johns Street. As the Shelter began to evolve, more land was needed and, after briefly running out of No 4 Les Rocquettes, the current site was bought in 1929 and we have remained here ever since.

During our purple week, we are encouraging our supporters to help raise money for the shelter in any way they can. In previous years we have seen cake sales, purple mufti days, a birthday bingo night and some staff even dyed their hair purple!

We will update our website with all up-coming events and information about what is going on through the week. Please contact us on 01481 257261 if you have any ideas or want to get involved.

## A la perchoine to Tony Gallie

Tony Gallie has worked at the animal shelter for the last ten years and was one of the GSPCA's longest standing members of staff. At the end of December 2015, Tony left the team for new challenges and we were all very sad to see him go.

Steve Byrne, GSPCA manager said "Tony will be missed by all at the shelter. He has been an amazing team member here at the GSPCA. He has worked primarily in the kennels, but nothing was too much for Tony who was always keen to help others, working day and night. Tony has a wonderful family as well as an excellent work ethic and we all wish him all the best for the future. He has been a great friend and I am proud to have been his manager and I know he will do well in whatever he sets his mind too."

Tony's main role at the GSPCA was an Animal Care Assistant, primarily working on the kennel block. Tony has a brilliant way with dogs and his calm



nature has helped to bring around even the most nervous of dogs. As well as working his day shift, Tony would take in and care for any animals brought to the shelter out of hours and always be at the end of the phone for any members of the public with animal related queries.

Tony has also helped to support the GSPCA by getting involved with the Itey and Saffery Champness walks round Guernsey and diving into icy cold water for the Polar Bear swim on Christmas Day.

We all wish Tony the very best and good luck in his new job and hope he will stay in touch!



## A fond farewell to Richard Chandler

Richard Chandler sadly passed away peacefully at home on 1 October 2015. The staff at the GSPCA were deeply saddened by his passing. Steve Byrne shares some thoughts:

*Richard was not only a work colleague, in the time I knew him he certainly became a very dear friend to many at the Shelter and a kind of grandfather figure.*

*There were three things in Richard's life that drove his heart and soul. Without doubt, this started with his family who he loved dearly and spoke often of how proud he was of each and every one.*

*The second was the GSPCA and caring for animals. Richard was a wonderful man who passionately cared for for the Shelter and the team at the GSPCA, and he is sorely missed*





by us all. Despite his grumpy old man demeanour and untidy desk, he wanted what was best for everyone and always wanted to see people do their best.

many may not know the extent of Richard's role over the years at the Shelter or the dedication and pride he took, despite the organised chaos he called his desk. Some of his highlight were:

- He cared for the lion cubs
- Covering the front desk
- Manned the ambulance
- Cleaned kennels
- Ran the accounts
- Arranged the rota
- Hand rearing baby birds and many other species
- Ordered stock
- Fixing the IT
- Liaised with vets
- Fund raising
- Helped catch stray dogs like Jessie the Beagle
- Helped rescue the Slovakian puppies
- Even dressed as 'Big Bird' for the Giant Animal Mascots

Over the years, Richard has helped and organised all levels of the work of the GSPCA, from living on-site to sitting at his desk where he was most at home, directing what he called his 'minions' with his dry but funny sense of humour - he certainly loved his role and the difference he made.

Finally, his third passion in his life - when he wasn't talking about is family or the GSPCA - was, without doubt, the rugby. Me being a Welshman and Richard being... well... English meant we spent



any hours joking about the better team. He also spoke often of his younger days, when he would like to think he was the best rugby player and could hold his beer better than any other of his team.

Now, I know there will be many other reasons but these, for me, stand out as making him the man he was. A family man, a dedicated and caring person, a wonderful member of the team... and someone who didn't always cheer for the best rugby side!

Richard, without doubt, has made a lasting difference not only to many of us at the Shelter today, but in helping countless animals and their owners and has touched many lives - we will all miss him greatly.

Our thoughts are with Richard's family, friends and all those that cared for him. We all miss him dearly at the GSPCA and we are honoured to have had such a dedicated, passionate and amazing person as part of our team.

---

# Changes at the Shelter

## The GSPCA pop-up shop

The GSPCA now has its own pop-up shop on-site. It is located behind the new cattery and is open from 9am to 5pm. Inside you will find a large range of items from clothing to DVDs, books to teacups, ornaments to games and LOTS of soft toys! Pop in to have a look around and if you see something you like, just take it down to reception to pay.



## New Cattery will be open to the public

Our new cattery has been operational for two months now and, although it has taken a little time for the staff to get used to the building, the cats certainly seem to love it! The new design gives all the cats indoor and outdoor spaces, connected with a cat flap. For cats that have come into the shelter together, the pens can be connected to each other to allow the cats to have more space. They have indoor and outdoor shelves that they can sit or sleep on and the outdoor shelves offer great views over the shelter and surrounding fields. The cattery also has a socialisation room which has been kitted out with toys, hiding places and scratch posts. This has been especially



useful for socialising the kittens and exposing them to different places. In 2016, we will be opening the cattery to the public. In our current system, if you want to view the cats, you need to make an appointment with one of our cattery staff. You will soon be able to walk around the cattery and see the



cats that are available without the need for an appointment. The cattery will open between set times that will be advertised shortly. The outdoor areas of the shelter will also be open to the public and you will be free to have a look at the rabbits, tortoises and birds (during the winter, some animals maybe inside and not available for viewing without an appointment). There are also picnic benches around the site and you are more than welcome to bring your own picnic lunch!



# Christmas Events

## a fantastic fundraising December!

As always, this Christmas was a very busy time for us, but we have enjoyed every minute!

Something different for us this year was the Market Square stall in town, which we ran from 8am till 9pm on Thursdays and 8am till 5pm on Saturdays during the run up to Christmas. The late night shopping evenings are always very festive and great for getting you into the Christmas mood! Our main attraction

At the stall this year was Molly, Steve Bryne's seven month old Beagle. Molly dressed up for the occasion and had a great time meeting all the passers by! Molly was brought into the GSPCA for rehoming when she was just 3 months old. She was brought over from the UK, but due to situations beyond their control the family were unable to keep her. Steve fostered her when she arrived at the shelter and (unsurprisingly) Molly never came back! The Market stall raised over £1000!

We also held out Santa Paws Dog Walk on the 13th December at Sausmarez Park. This was just a bit of fun, but raised £169.80. We are currently planning an Easter Paws Dog Walk, so keep your eyes peeled for information!

We were incredibly lucky this year to be donated a field of 900 Blue Spruce Christmas Trees! This generosity was more than we could have hoped for and led to some fun weekends selling and cutting down the trees! The Blue Spruce is a beautiful tree that does not drop its needles, making it a perfect Christmas tree! Our Christmas tree sales raised almost £2000!

Other events included the Oatlands Christmas fayre, where we raised over £400; the Cotils Christmas fayre, £300; the Grammar School Christmas Fayre, £370; and the Round Table Christmas Fayre, where we raised a whopping £1050!!

All the staff at the GSPCA would like to extend a huge thank you to everyone who supported us at the events, whether helping behind the stall, having a go on the tombola or just dropping some change into a collecting bucket.







# Masquerade Ball

**Friday 1st April**

**The Farmhouse**

**Tables of 10 - £65 per person**

*Headlining - 'Youthe'*

*Supported by the Farmhouse with a fantastic local menu*

*Save the Date will amaze us with a stunning room*

**To book call 01481 257261**

**Email [stevejbyrne@gspca.org.gg](mailto:stevejbyrne@gspca.org.gg)**

Details on our website [www.gspca.org.gg](http://www.gspca.org.gg)

*Please get in touch with the GSPCA Manager  
Steve Byrne if you or your business would like to  
help sponsor this event*



# Making a lasting difference

The GSPCA is a charity that was founded many years ago and wouldn't be able to carry out its animal welfare work without the generosity of our caring and kind supporters.

With rising costs and thousands of animals each year the GSPCA needs your help as we receive no state aid.

You can help us by leaving a gift to the GSPCA in your Will which allows you to continue helping to improve the lives of animals into the future.

After providing for those you care for, please consider leaving a proportion of what remains to us. A gift like this to GSPCA ensures our animals and those in Guernsey will always have someone to keep them safe.

If you have already left a gift in your Will, please contact Steve Byrne on [stevebyrne@gspca.org.gg](mailto:stevebyrne@gspca.org.gg) or call 01481 257261. We can then keep you informed and up to date about developments at the Animal Shelter and our work. We always love to hear that you have left a gift but there is no pressure to say so. We understand that this is a private and personal matter.

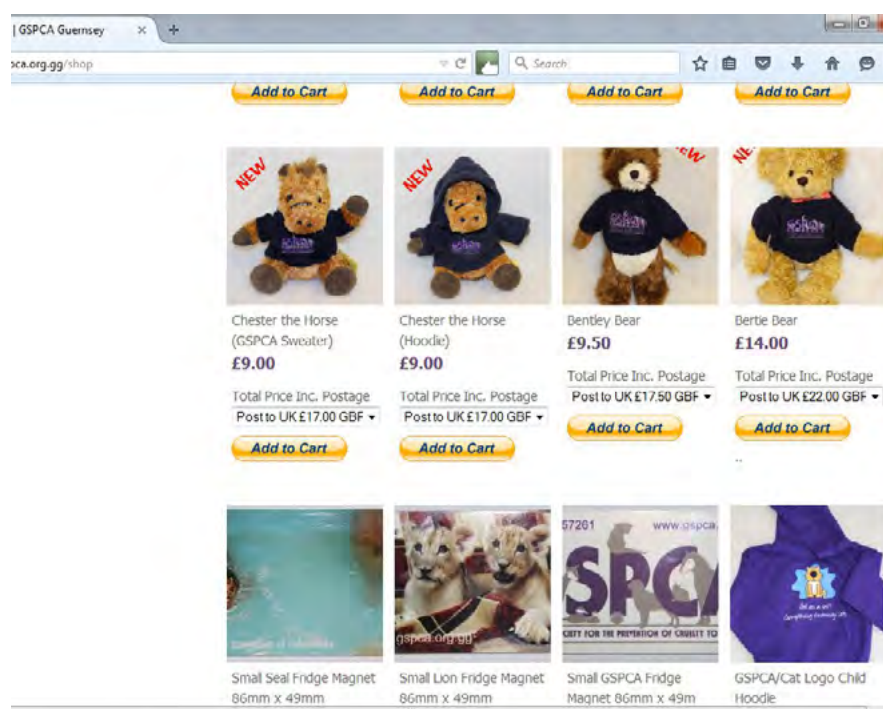
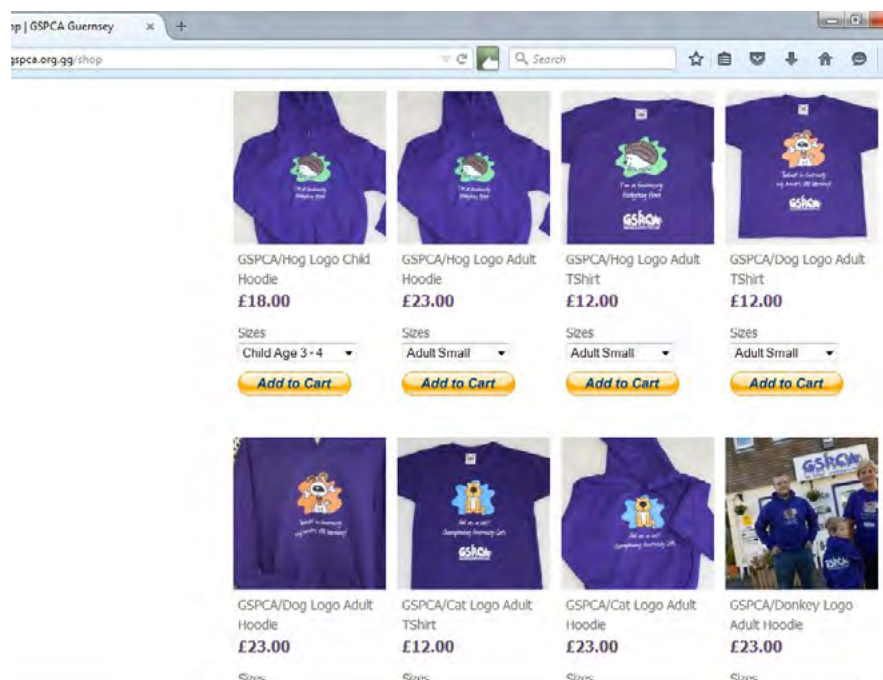
Leaving a legacy is not a decision that can be made lightly and we are always happy to discuss this with you or send out additional information.

As a charity, gifts in Wills account for approximately 50% of our total income. We rely on this to continue to give safety and sanctuary to the animals in our care. We simply couldn't do it without your help and support.

Our charity details are :  
Guernsey Society for the Prevention of Cruelty to Animals, Rue des Truchots, St Andrews, Guernsey, GY6 8UD  
Tel: 01481 257261  
Email: [stevebyrne@gspca.org.gg](mailto:stevebyrne@gspca.org.gg)  
Guernsey Charity Number: 003

# Shop online

Have you seen our range of GSPCA goods?



**visit [gspca.org.gg](http://gspca.org.gg) or call into the Shelter**

Ref: GSPCA Charity No. 003  
Non Refundable fee cash



**GSPCA**  
GRAND SOCIETY FOR THE PROTECTION OF CHARITY TO ANIMALS

## DISCOUNT VOUCHER

Haskins Legal

**This certificate entitles the bearer to a 20% Discount on the fee note of drafting a Will if a Bequest to the GSPCA is over the kind sum of £250**

**HASKINSLEGAL**  
advocates and notary public  
HASKINS LEGAL  
College Chambers  
3-4 St. James Street  
St Peter Port  
Guernsey  
GY1 2NZ  
T: 01481 721316  
F: 01481 721317  
E: [info@haskinslegal.com](mailto:info@haskinslegal.com)

## Guided Tours and Birthday Parties!

The GSPCA is offering many opportunities for you to see behind the scenes at the GSPCA and learn more about the work we do and the animals we care for. Our guided tours last approximately 90 minutes and during the tours you will get to meet both wild and domestic animals. The tours cost £5 for adults and £3 for children or £15 for a family of 4. The tours are very popular so we do suggest calling ahead to book!

We will also be running Easter egg hunts and tours around Easter time. These are open to all ages and there will be prizes and Easter eggs for all the children. Last year over 70 children visited the shelter for the hunts and we had a great time! There will be more themed tours in 2016, so watch this space!

### Tour dates for this year are:

Mon 22nd - Sun 28th February GSPCA Guided Tours 2pm  
Sat 19th & Sun 20th March Easter Bunny Treasure Hunt and Tour  
Sat 25th & Sun 26th March Easter Bunny Treasure Hunt and Tour  
Mon 11th - Sat 16th April GSPCA Guided Tours 3pm  
Mon 30th May - Sat 4th June GSPCA Guided Tours 3pm

The GSPCA are now also holding birthday parties at the animal shelter. This was new for 2015, but proved to be a great success. The children were able to have a tour of the shelter as well as meeting and handling some of the animals onsite.

If you are interested in arrange a private tour of the GSPCA we ask for a minimum donation of £40 for a group and an additional £5 per person with groups larger than 8 . For groups of children we need to have a ratio of one adult to eight children.

**Please call the shelter on 01481 257261 to arrange a tour.  
For schools/education visits, please ask to speak to Sarah Creasey or email [sarahcreasey@gspca.org.gg](mailto:sarahcreasey@gspca.org.gg)**





# Dog & Cat Emergency First Aid Training

We are delighted to be able to announce the 2016 dates for our Dog & Cat Emergency First Aid Training. Within the sessions you get the chance to learn about what to do if you were faced with an emergency situation with your dog or cat. All participants receive handouts, a few goodies and a certificate.

## The dates for the first aid courses are:

<b>Cat First Aid</b>	6.30pm - 8.45pm	Tuesday 10th May 2016	Ref - Cat 10/05
<b>Dog First Aid</b>	6.30pm - 8.45pm	Tuesday 17th May 2016	Ref - Dog 17/05
<b>Dog First Aid</b>	6.30pm - 8.45pm	Tuesday 22nd November 2016	Ref - Dog 22/11
<b>Cat First Aid</b>	6.30pm - 8.45pm	Tuesday 29th November 2016	Ref - Cat 29/11

All first aid courses are a minimum £15 donation and you must book your place by Tuesday lunch time on the day of the training session.



*To book your place call 01481 257261 quoting the reference code so we are aware which course you would like to attend.*



In the Autumn Term of 2015 Guernsey schools were invited to take part in the GSPCA Design an Advert Competition.

The competition which was run by Simone Richards the Lead Technology Teacher and GSPCA Welfare and Education Officer Sarah Creasey was rolled out to achieve a number of educational aims including:

- Bridging school work and the world of work.
- In this competition, we are demonstrating that ICT applications effectively used in classrooms are not mere 'child's play' or 'school work', but tools which are used identically in the world of work.

The competition was also helping the GSPCA in launching a new promotional



advert for the Angel Pen Pal Sponsorship Scheme which is a way islanders and supporters can help towards the care of the hundreds of animals at the GSPCA and the thousands that are helped every year.

Sarah and Simone traveled to the schools and classes who took part and a web page was designed with a video about the aims of the objectives and prizes to

be won which can be seen still by going to - <https://sites.google.com/a/ron.sch.gg/gspca/home>

Le Rondin, Le Murier, Hautes Capelles and St Mary & St Michael Schools took the lead with the competition entering an amazing 268 entries to be judged.

Sarah Creasey from the GSPCA and Simone Richards Lead Technology Teacher judged the competition on Friday 11th December with GSPCA Manager Steve Byrne also checking out the amazing adverts put together by so many talented youngsters.

It was extremely difficult to come to a decision and there were some amazing images and wording used which made the final decision so difficult.

After a lot of discussion and reviewing so many wonderful entries a short list was made with one stand out entry.

The judges decided that the winner of the GSPCA Design an Advert Competition to help promote the Angel Pen Pal Sponsorship scheme was a young lady from St Mary and St Michael Primary School named Maisie Belford who was in year 6.

*I thought my chances of winning were very slim, I didn't imagine my advert would win.*

Maisie Belford

Sarah Creasey GSPCA Animal Welfare and Education Officer said "We are always looking at ways to educate all ages of our work and raise funds for the animals in our care."

"It was great when we were approached by Simone to run the 'Design an Advert Competition' and meant that not only were the children and teachers finding out about our work at the GSPCA, but were also learning new skills to help promote what we do and how anyone



*A very surprised Maisie when she heard she had won the competition*

can support our work and the many animals at the Shelter."

"With nearly 300 entries it wasn't an easy task to find a winner and they were all great in so many ways."

"Maisie's entry really stood out and she was truly shocked when in an assembly she found out."

"Today the winner Maisie and her class are going to push the buttons to activate the video online for the first time and will have a tour of the Shelter and of course get some winners cake."

St Mary and St Michael Primary School Head Teacher Helen Shepherd said "We, at St Mary and St Michael were absolutely delighted to hear that Maisie's advert scooped 1st place."

"We are all so proud of her. Maisie is a committed pupil who puts a great deal of effort into every task she undertakes. She is a rightful winner!"

Year 6 Class Teacher Sally Murray "The class were really interested in doing something for the GSPCA, and loved using an APP in order to do it."

Winner Maisie Belford from Year 6 said "I enjoyed the whole process from the start, as I have always been involved with computers. I thought my chances of winning were very slim, I didn't imagine my advert would win."

Steve Byrne GSPCA Manager said "A huge thank you to Simone for running this amazing competition and of course to all of the entries and teachers for putting together what were all superb adverts many of which we may use in the future but without doubt we can all say Maisie did an amazing job and congratulations to her winning and supplying the GSPCA with a great advert to promote a great way for those wanting to support our work."

The advert can be seen online on the GSPCA website blog page as well as on other pages of the website and social media.

*If you would like to become an ANGEL Pen Pal sponsor, please fill in the sponsorship form and help us ensure the animals in need in Guernsey are cared for. Thank you - you can make a difference to the thousands of animals we help.*





## Pen Pal Sponsorship at the GSPCA

*Support animals each month in Guernsey through a donation or by monthly giving*

Animals come into the shelter for a variety of different reasons. We need to do the best we can for every animal that comes through our doors. On average it costs £15 to care for a dog, £10 for a cat and £6 for the smaller mammals. Our Angel Sponsorship Scheme asks supporters to sign up to a monthly donation of as little as £2 a month. You can sponsor a specific species, such as a kennel, hog house or cat pen, or donate to the whole shelter. Donators will have a plaque on the wall of the GSPCA, making this a perfect gift or way to remember a loved one. If you donate £5 a month, you will receive a free t-shirt or polo shirt, and if you donate £10 a month, you will receive a free hoodie. All donators will receive our quarterly newsletter, car sticker, certificate and GSPCA membership.

**I would like to become a GSPCA ANGEL Pen Pal Sponsor.** When completed return to GSPCA Animal Shelter, Rue des Truchots, St Andrews GY6 8UD

I would like to sponsor (please tick) ☐ A Kennel ☐ A Rabbit Pen ☐ A Hedgehog Unit ☐ A Cat Pen ☐ A Ferret Pen ☐ The Wildlife Unit

This is for (please tick) ☐ For me ☐ As a gift ☐ In memory

Please send my quarterly Newsletter by (please tick) ☐ By post ☐ By email

I would like to receive information about GSPCA events: ☐ Yes ☐ No

Title ..... Name.....

Address .....

..... Postcode.....

Email address .....

(by providing us with your email/telephone number you are giving permission for the GSPCA to contact you by these means with the GSPCA Sponsor Scheme information)

**If you are making a gift of your sponsorship please fill in the name and address of the recipient below.**

Title ..... Name.....

Address .....

..... Postcode.....

Email address .....

What is the occasion? .....

Please give any relevant date .....

**If you are sponsoring as a gift or in memory of a pet please write the name and short message below -**

Name.....

Address .....

Bank Details - I enclose a cheque/postal order or would like to make a donation of £  (made payable to 'GSPCA')

To pay by credit/debit card, please complete your details & amount above & your card number below.

Delete as appropriate Access / Visa / Mastercard / CAF charity card / Maestro

Card number

Expiry date  Valid from

Issue no. (Maestro)

You can donate online with Paypal via our website [www.gspca.org.gg](http://www.gspca.org.gg)



# Animals looking for new homes...

Over the next few pages you will see some of the animals looking for homes. Please bear in mind that this is not an exclusive list and the status of the animals (i.e. whether available, reserved or rehomed) can change at any time. Please pop in and see us or visit our website for more information on our adoption procedures.

## The Cattery

Please bear in mind that cats are predominantly solitary animals and, although some cats can live well in groups, many prefer to be the only cat in the house. We will advise you if any of the cats looking for new homes will be able to live with cats or dogs.



**Monkey** is a 9 year old tortoiseshell people cat! Monkey does not like other cats, how-ever this lovely girl gets on really well with children and would make a fantastic family cat. Monkey is

diabetic will require insulin injections am and pm, a special diet and regular vet checks. The GSPCA will provide all training to give insulin injections.



**Gemini** is a 6 year old cat who was brought into us as a stray. Although initially very unsure of humans, Gemini has turned into a lovely cat. We would

like to find him a home where he can get outside to practise his hunting, however he loves company and more often than not he will probably be curled up on your sofa!

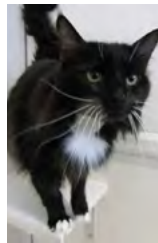


**Smudge** is a 9 year old cat who came in as sadly his owner could no longer keep him. Smudge is a timid cat

who has been kept as a housecat. It will take time to get to know new owners but he has the makings of a lovely pet. We are looking for a quiet home for Smudge with no other cats, dogs or children and with company during the day.



**Puce (Putsa)** is a 7 year old female tortoiseshell that needs a quiet home with no other pets or young children, as she can get a little upset with her timid nature.



**Jubilee** is a fantastic 3 year old semi-long haired cat. He has a wonderful nature and loves his cuddles! Due to a cat fight be-fore he came into us, Jubilee is prone to eye infections and may need to have treatment on and off throughout his life.

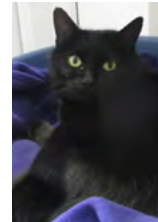
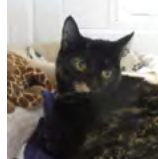


**Louis** is a stunning 2 year old tabby cat. Unfortunately, Louis has asthma and needs to be on daily medication. He has come out of his shell during his time with us and enjoys having a fuss made of him.



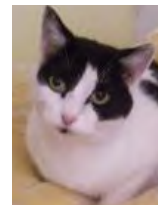
**Marmite** (ginger and white) and **Marble** (dark tortie) are two 7 year old cats who came into the shelter together. Although they get on well with each other, they do not like other cats and we would be looking to rehome them as only pets. Marmite is an outgoing, friendly

cat, however Marble is a little more timid and will take more time to trust new owners.



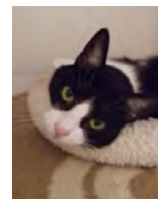
**Ebony** is a 3 year old cat who isn't keen on other cats, which is why she came to the shelter. As she is a timid cat she is looking for a home with no dogs or children.

Ebony who needs time to get to know new people so a quieter home would be beneficial for her needs.



**Lucky** is 6 years young and has come into the Shelter as sadly her owner was moving off Island, this petite little girl is very friendly and loves a fuss but needs

a home as an only pet with no children Could you help her with a forever home?



**Jo-Jo** is a very friendly 9 year old neutered male who requires a home as a housecat only. He needs a home with no other pets but would be fine with children

aged 10 years +. Jo-Jo only has 3 legs due to a previous accident but he does not let this affect him in any way, he is a very loving cat who adores attention and being made a fuss of. As a housecat his environment needs to be as stimulating as possible to prevent any unwanted behaviour occurring, staff will be happy to discuss the needs of a housecat with any new potential owners.



**Kiki**, aged 6, and her son **Bertie** (5) are looking for a home together. Can you help this lovely mum and son?



These are just a few of the cats we have at the shelter. Please pop in and see us if you are interested in adopting a cat.



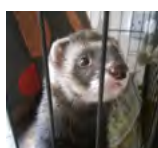
## The 'Hospital' (small mammals)



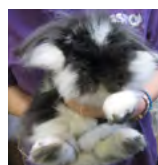
**Dozzer and Manfred** (8 years old) are two Albion frogs.



**Crosby, Wills and Nash** are 3 very friendly ferrets looking for a home together.



**Sanchez** is a handsome, but nervous ferret who ideally need an experienced owner.



**Stewart** is a young neutered male rabbit who came into us as a stray. He is very fluffy and very friendly!



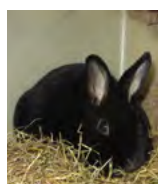
**Mertal** is a beautiful 1 year old female rabbit who came into us as her owners were moving house and unable to take her.



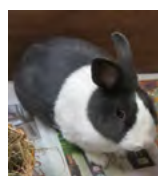
**Kaulik** (17 months) is a handsome, large lop-eared rabbit. He has been with us for 5 months and we would love to find him a home.



**Ralph** (approx. 16 months) is a beautiful chinchilla who needs a bit of help getting used to people and handling.



**Christopher** is a 2 year old Rex who been with us for 10 months. He has a lovely nature and an incredibly soft coat.



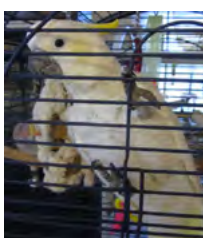
**Cobweb** is a sweet natured, neutered male rabbit. Cob-web has been to visit school and nurseries with our Education Officer!



**Charlie Chaplin** a rat in need of a new home



**Blue Bear** is a one-year-old rat in need of a new home



We have a variety of small, domesticated birds, including budgies, cockatiels, finches and, currently, a cockatoo, at the shelter. We aim to rehome all birds to aviaries or free flying environments and we will be happy to advise you on the different

species and their needs (e.g. exercise and companionship). All birds can be adopted with cages if they are needed.

## The Kennels

We urge people who are looking for a dog to send an application into us, regularly check our website and contact us if you see a dog you are particularly interested in. The rehoming team will keep applications for 1 year and contact people if we feel we have a suitable dog.



**Cianti** is a 5 year old Staffie. She is a friendly, sociable young dog who enjoys walks, cuddles and her tennis ball! Cianti can live with dogs, robust children (she is quite bouncy) and she has lived with cats. She is a sweet dog looking for a new start.



**Betty** is a 2 year old English Bull Terrier. She is bouncy, excitable and loveable! Although Betty has lived with another dog, she needs some training around other

dogs on lead. Betty has some health issues and if you are interested, please visit our website, or call us for more information

## GSPCA Adoption Charges

Dogs	£250
Guinea Pigs	£15
Cats/Kittens	£80
Birds (varied species)	from £12
Rabbits	£29.50
Chickens	£6
Ferrets	£25
Mice/Rats/	£6
Hamsters/Degus	

We have more animals available and other arriving all the time. Please visit our website or call the shelter if you are interested in any of them, or would like to arrange a visit.

***Taking on any animal is a big responsibility. They require care, attention, time and love. We urge everyone to seriously consider whether they can provide for an animal and avoid impulse buying.***

## GSPCA flag day

A massive thank you to all the volunteers and staff who gave an hour or two of their time to help at our flag day. We raised over **£3,000** - an incredible achievement! We will advertise the dates for our 2016 flag day as soon as possible. Each year our flag days raise a huge amount for the shelter, with volunteers only having to give up an hour of their time. It is a very easy way to help the shelter raise much needed funds.

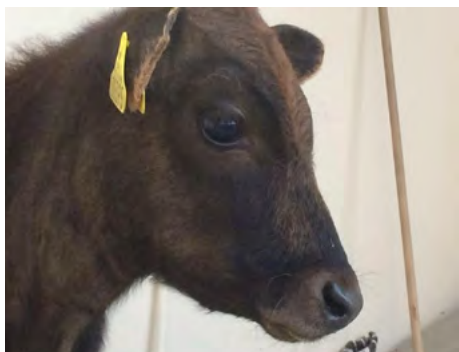
If you would be interested in helping please contact Sarah Ozanne by emailing [fundraising@gspca.org.gg](mailto:fundraising@gspca.org.gg) or calling the GSPCA on 01481 257261.

**We are incredibly grateful for any fundraising that is done on behalf of the GSPCA and would like to extend a very special thanks to The Guernsey Tennis Club who raised a fantastic £981.20 and the Co-op stores, who held a cake sale and raise £162!!**



---

## A rather special stray...



One of the best parts of working at the GSPCA is the variety of animals we get to work with. On the 30th September staff at the shelter were surprised to see a calf in the outdoor hospital area, which is more normally used by dogs! The calf, nicknamed Early Morning, had escaped from its paddock in the early hours of the morning. The police had called the GSPCA warden to assist and as there was no clear way it had escaped, it was deemed safer for the calf to bring him back to the shelter. We were able to contact the farmer who quickly came to collect his missing calf!



## Oiled birds

With the recent stormy weather we are urging people to look out for oiled birds around Guernsey's coast line. Each year the GSPCA helps birds, such as this Guillemot, that have been effected by oil in the sea. As the storms churn up the oil, the Guillemots still need to dive for fish. It is as they dive through the oil that their feathers become coated. This then increase their buoyancy which prevents them from hunting. Providing the bird has not ingested too much oil, it is possible to successfully wash and rehabilitate these birds. We urge any one who finds an oiled bird to call the shelter, or bring it up to use if you are able to.



# How your Business can help the GSPCA & Corporate Sponsorship

There are many ways in which your business can get involved with supporting the GSPCA and it provides an excellent opportunity for companies to reach out to animal lovers and find an audience that believes deeply in Animal Welfare.

There are many ways to get involved and sponsorship opportunities are available and can be tailored to fit the joint needs and focus of both your company and the GSPCA.

From corporate volunteering opportunities and employee fundraising to sales promotions and sponsorship, there are great opportunities for you and your company to create a mutually beneficial partnership with the GSPCA.



## Why choose the GSPCA?

By forming a partnership with the GSPCA your business can provide huge benefits to you and your company including:

- Increasing staff AND customer loyalty when associating with only all Animal Welfare organisation in Guernsey.
- It gives you and your colleagues the opportunity to gain a great sense of pride and achievement through life-changing fundraising challenges.
- Getting your colleagues motivated at work and feeling inspired by giving something good back to society.
- Helping your company achieve CSR objectives and providing engaging content for CSR reports.
- Increasing staff enthusiasm by your company working with such a passionate organisation as the GSPCA and in turn potentially reducing staff turnover.

We need YOU to help us become your company's charity of choice!

## Please nominate the GSPCA

If your company has a charity of the year programme, why not speak to your company's charity committee about how to make the GSPCA your charity of choice?

You may be asked by your company to vote for a charity or choose your favourite charity to be on a shortlist. We totally rely on YOU to please put the GSPCA on that list!

By making the GSPCA your company's charity of choice you will also benefit from being associated with only all Animal Welfare organisation in Guernsey.

If you want more information on how you can help the GSPCA become your charity of choice or charity of the year get in touch with Steve Byrne GSPCA Manager [stevejbyrne@gspca.org.gg](mailto:stevejbyrne@gspca.org.gg)

## Become an exclusive Build Partner

The Build Partner programme is designed to meet the building costs associated with our new £1.3 million multi-purpose animal welfare building. The building is to replace five existing structures that have become unusable with age.

Our new building incorporates a welfare cattery, quarantine and isolation facilities, a secure transfer location while also providing logistical and organisational spaces and facilities for the day to day running of the GSPCA.

## Products

If you are a retailer or manufacturer and would like to develop products with us, then please do get in touch.

At the GSPCA we have a range of log'd goods, collection boxes and counter boxes. If you or your business is interested in helping raise funds through

these for the Shelter please email  
[stevejbyrne@gspca.org.gg](mailto:stevejbyrne@gspca.org.gg)

### Sponsorship of Events

Maybe your business would like to Sponsor all or part of a GSPCA event? The major annual events we hold each year are:

- We hold monthly Bingo Nights at the Market Bistro
- GSPCA Purple Week – February
- GSPCA Mafia Ball - February
- Big Fun Family Lunch - March
- Easter Bunny & Egg Hunt
- GSPCA Cupcake Week – May
- World Stray Day – April 4th
- Summer Fair & Dog Show – June/July
- Animal Welfare Seafront Sunday – September
- GSPCA Animal Awards – Autumn
- World Animal Day – 4th October
- GSPCA Ball - November
- Santa Paws Walk & Christmas Fayre

By sponsoring one of these events we can include your business in promotional material, our supporters newsletter, and online with our web site and social media.

Each year we also look for local businesses to Sponsor runners for the Animal Welfare Seafront Sunday Giant Animal Mascot Race and for more details please go to - <http://www.gspca.org.gg/page/animal-welfare-sea-front-sunday>

### CSR Volunteering

Whether an individual or a group, here at the GSPCA we can provide CSR opportunities for you and your team to help out at the Animal Shelter.

From individual projects to the daily work, events to administration there is something for every-one.

To find out more please go to - <http://www.gspca.org.gg/about/corporate-and-group-days>

Many of the volunteers that have helped through their work place have continued to volunteer at the Shelter during their



days off and we are very thankful to them for their support.

If your business has skills or expertise in a particular field and you would like to donate time or resources we would love to hear from you.

### Fundraising

There are many ways to raise funds for the GSPCA in the work place. From dress down days to dress up days, issue GSPCA pens to staff to a sponsored event, selling cupcakes for break to a sponsored silence for those chatty staff members...

If you have a great idea please let us know or have a look at others and download a sponsorship form by going to - <http://www.gspca.org.gg/fundraising>

### Wish List & Plans

Maybe your business would like to sponsor something specific to the GSPCA. We have an ongoing page dedicated to much needed items and appeals and you can see these by going to - <http://www.gspca.org.gg/about/our-plans-wish-list>

### Membership

As a charity we are made up of members who pay £10 a year to support the work of the GSPCA and for this they receive a number of benefits including a quarterly newsletter.



If your business wanted to join the GSPCA of behalf of your team and be part of the leading animal charity in Guernsey and receive updates and copies of the quarterly newsletter then please contact [stevejbyrne@gspca.org.gg](mailto:stevejbyrne@gspca.org.gg)

### Newsletter & Advertising

We are looking for a sponsor for our quarterly newsletter. If you are interested please email [stevejbyrne@gspca.org.gg](mailto:stevejbyrne@gspca.org.gg)

We would also like to hear from you if you would like to join us in sponsoring advertising for animals in need of homes or campaigns.

### Become an ANGEL

ANGEL is the newly launched animal pen and section sponsorship scheme and if your business is interested in having your business featured on the ANGEL Sponsorship Board in our main car park and help directly towards the many animals in our care please contact [stevejbyrne@gspca.org.gg](mailto:stevejbyrne@gspca.org.gg)

To see details on the scheme please go to – <http://www.gspca.org.gg/about/angel-sponsorship-scheme-animals-needing-guernseys-everlasting-love>

### Talks and Training

If your business would like a talk about the work of the GSPCA or potentially have training needs then please get in touch. To find out a little about our education programme please go to - <http://www.gspca.org.gg/services/education-and-schools>

If your business would like a guided tour of the Shelter then for a donation we can arrange a member of staff to show you around the facilities and talk about the hundreds of animals in our care.

***If you would like to discuss how your business can help support the GSPCA then please contact GSPCA Manager Mr Steve Byrne on 01481 257261 or email [stevejbyrne@gspca.org.gg](mailto:stevejbyrne@gspca.org.gg)***



# Atlantic Grey Seals

## (Halichoerus grypus)

Guernsey is lucky to be home to a colony of Atlantic Grey seals that can regularly be seen around our coast line, especially in the Humps (north of Herm) and off the south-west point of Guernsey. During the Autumn the pups will be born. At birth, these pups will weigh approximately 14kg. They will spend around 3 weeks on the shore with their mothers, feeding on her milk which contains 60% fat. During this time the pups will quadruple in size at lay down fat reserves to help them survive while learning to fish. Once the pups have weaned they are left to fend for themselves and it is during this time that they can get into trouble, as stormy weather can prevent the pups finding enough food. A healthy pup looks like a big, stuffed maggot without a neck. However, a thin pup looks sleek (but not bony) and has a visible neck, like a healthy dog.

Steve Byrne, the GSPCA Manager said "It is always hard to rescue and

rehabilitate seals which are so weak, but to have rescued four in the last two years and got them all back to the wild in Guernsey where they are from has been a real joy for all of the team."

If anyone spots a pup, with or without a mum, we really do appreciate a call so that we are aware of its location and condition. Here is some further advice: PLEASE DO NOT TOUCH THE SEAL. They can give a nasty bite, which will become infected by bacteria that live in a seal's mouths. Do not allow dogs or other animals to harass a seal.

If a Seal is scared back into the water, it could then be washed out to sea by strong currents and be lost. You should not put a seal pup back in the sea as it may get into difficulty.



If you believe the seal pup to be sick, thin or injured then please contact the GSPCA immediately on 01481 257261 at any time of the day or night.

When reporting an injured, sick or abandoned seal to the GSPCA, please make sure you are able to supply the following information:

- Exact location
- Position on the beach, and state of the tide
- How long you have observed the pup; any disturbance / risk to it
- Any wounds / obvious signs of illness
- Length/colour/condition.

**STOP  
PRESS**

In early January, a very sick and injured grey seal pup was rescued on the South coast of Guernsey.

Bonnie has she has been named is without doubt the weakest seal pup ever to be rescued by the GSPCA and the team were overjoyed that she survived the rescue and the first few days.

At only 14kg at time of rescue Bonnie was 26kg lighter than she should be for her age which was only around 2 weeks old.

It was touch and go during the first few days and Geoff George Animal Collection Officer and head seal rehabilitator with the GSPCA team worked around the clock to ensure she survived the first few days.

Local vet and GSPCA President John Knight attended shortly after Bonnie's rescue to treat and medicate her.

She is still very weak but the team have moved her diet onto fish soup and even some whole fresh herring along with the drugs she has been prescribed.

She continues to be under a heat lamp and heated seal room where she will likely need to be kept for some time before being able to move her into the pools at the Shelter but it is still to early to tell if she has other internal complications and we continue to work with the vet to treat her as well as keeping our fingers crossed for her.



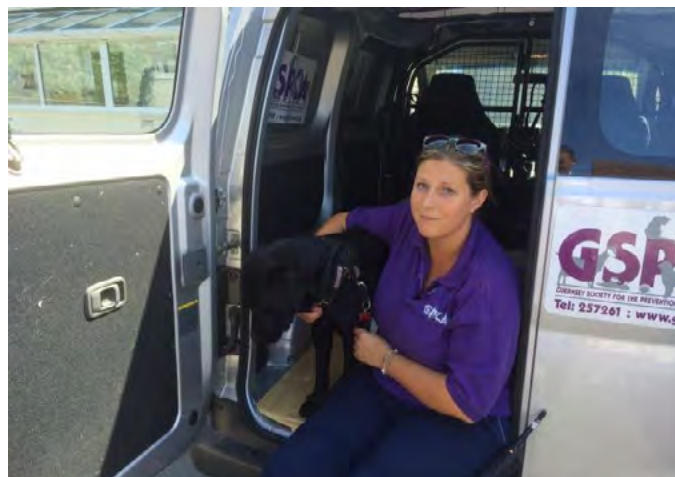
## Would you like to work with animals in Guernsey?

At the GSPCA we care for between 200 and 300 animals at any time and work 24 hours a day 7 days a week.

Without volunteers we couldn't carry out the vital animal welfare work. We are currently looking to find volunteers that can help in all areas and especially help us cover the ambulance work which we have carried out as a 24 hour service for over 40 years.

Our Volunteer Wardens help ensure between 6pm and 8am seven days a week that any rescues, collections of strays or other emergencies are responded to and we are also looking for wardens to help on Saturday and Sunday between 8am and 6pm.

To become a volunteer warden you will need a driving licence and a passion for helping animals and the local community. We have a fantastic team of volunteer wardens which help ensure we are able to respond to emergencies 24 hours a day and if you think you could help please come along to one of our volunteer induction evenings or contact the GSPCA Manager Steve Byrne.



Steve Byrne GSPCA Manager said "We have over 500 volunteers that help us every year and we are hugely grateful to each and every one for all of their support."

"We are currently looking to find volunteers that can help us cover our emergency service which is a hugely varied and exciting role."

"If you think you could become a volunteer warden or would like to help in any of our other roles please do get in touch."

## Redevelopment Funds

With our new building completed we have taken the first step into our 10 year redevelopment plan. If you would like to donate to other parts of the project then here is an easy way to help us plan for the future:

- Via Paypal or the Account Details are: Bank - HSBC  
Payee Account - GSPCA Sort Code - 40-22-25  
Account Number - 22076233
- By calling 01481 257261
- By filling in the form on our website: <http://www.gspca.org.gg/blog/gspca-10-year-redevelopment-plans-launched>

We thank you for all of your support. If you would like any more information on the redevelopment please contact GSPCA Manager Steve Byrne: [stevejbyrne@gspca.org.gg](mailto:stevejbyrne@gspca.org.gg), 01481 257261

<http://www.gspca.org.gg/about/our-plans-wish-list>

On our Wish List page you can see a link to our Amazon Wish List which is a great way you can help us care for the animals at the Shelter, as it is full of items that we really need here at the GSPCA.







**ROSSBOROUGH**  
*Insurance*



## **Rossborough are in partnership with the GSPCA to protect Guernsey pets**

For each policy inceptioned Rossborough will donate £10.00 to the GSPCA.



### **Each plan provides:**

- Up to £4000 Vet's Fees cover
- Death
- Boarding Fees
- Holiday Cancellation
- Loss/Theft/Straying
- Advertising Reward
- Accidental Damage
- Personal Accident
- Public Liability
- No excess (except on Vet's Fees)
- 10% Introductory discount

**10% multi-pet discount**



**How to apply online: [www.rossborough.co.uk](http://www.rossborough.co.uk) and click on the Pet Insurance link**

**Alternatively you can call our office on 01481 241555**

Rossborough Insurance is a trading name of R A Rossborough (Guernsey) Limited. R A Rossborough (Guernsey) Limited is licensed by the Guernsey Financial Services Commission. Registered in Guernsey No. 2873. Registered Office: Rossborough House, Bulwer Avenue.

This product is underwritten by The Equine and Livestock Insurance Company Limited © 2014, Thorpe Underwood Hall, Ouseburn, York, YO26 9SS (registered in England and Wales no: 291910) which is authorised by the Prudential Regulation Authority and regulated by the Financial Conduct Authority and the Prudential Regulation Authority no: 202748.



# Chicken in a Basket & BINGO BASH



## The Last Post

Tuesday 9th February 2016 from 7pm  
£14.50 per person, £10.50 for children  
*includes food and 8 games of bingo*

To book your place or table please call 01481 257261, call in at the Last Post or  
online [www.gspca.org.gg](http://www.gspca.org.gg) Cash prizes, raffle and all proceeds helping animals in Guernsey

Please book your seat by lunch  
time 9th February (limited late  
bookings may be available)

Vegetarian and Gluten free  
options available

Additional bingo books  
can be purchased at £10

