



www.gspca.org.gg

01481 257261

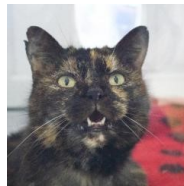
 **GuernseySPCA**

 **GSPCA**

GSPCA Newsletter 2017



www.gspca.org.gg



**Sunday
28th May
2017**



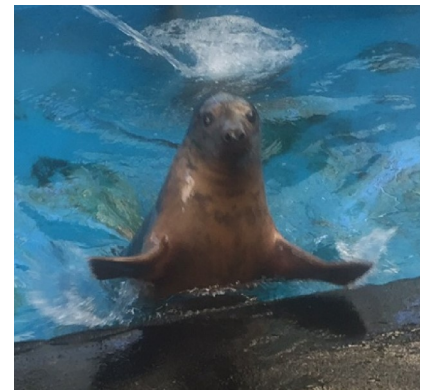
CELEBRATING ANIMALS IN GUERNSEY



In this Issue:

GSPCA Events	2
GSPCA Dreams	3
Sami the seal pup	5
Animal Welfare Seafront Sunday	6-8
GSPCA animal advice and warnings	9-12
International Award	18
How Your Business can help	24-26
Become an Angel Pen Pal Sponsor	29-30
Birthday parties at the GSPCA	32

**Sami the seal pup
rescued in Jersey nearly
ready to be released to
the wild**



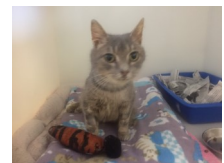
**GSPCA Guernsey
Community Foundation
Charity of the Year &
International Special
Recognition Ceva
Animal Welfare Award**



Forth Coming Events with the GSPCA



28th April – Swede Dreamz Ball with Sidneys Sponsored Events – SOLD OUT
4th May Thursday 630pm Volunteer Induction Evening
9th May Liberation Day Stalls
10th May Cat First Aid Course 630pm—£15 per person
14th May Taste Seafront Sunday
18th May Thursday 630pm Dog First Aid Course—£15 per person
23/5 Tuesday 630pm Volunteer Induction Evening
27th May Saturday Swede Dreamz Ball with Sidneys Sponsored Events – only
1 table left
28th May GSPCA Animal Welfare Seafront Sunday
29th May to 3rd June Guided Tours each day at 2pm call 257261 for to book
4th June Arts Seafront Sunday
11th June Taste Seafront Sunday
14th June 630pm Volunteer Induction Evening
19th July Wednesday 3pm Volunteer Induction Afternoon
24 to 29 July 2pm each day guided tours—call 257261 to book
27 July Thursday 3pm Volunteer Induction Afternoon
29/7 Charity Fate at Government House
6th August Taste Seafront Sunday
7th August Monday 630pm Volunteer Induction Evening
11th August Round Table Harbour Carnival
11-12th August South Show
16-17th August West Show
19th August GSPCA Flag Day
20th August Taste Seafront Sunday
23-24th August North Show
7th September Thursday 630pm Volunteer Induction Evening
12/9 Tuesday 630pm Committee Meeting
21/9 Thursday 630pm Volunteer Induction Evening
23-29th October Special Halloween Guided Tours
11th November 1960's & Masquerade Ball at the Farmhouse
13th November Monday 630pm Volunteer Induction Evening



Lots more going on and other events coming up.....

To book a place on any of the above events, or if you are interested in helping on one of our stalls,
please call the GSPCA on 257261

For a calendar of events during 2017 please go to

www.gspca.org.gg/fundraising



Help the GSPCA dreams come true



This year the GSPCA celebrates 144 years helping animals in Guernsey and we need your help.

We have many essential projects we need to achieve and many animals to care for.

With well over 400 animals in our care at any time and a Shelter where we have been based since 1929, each day raising the much needed funds to care for the animals and maintaining the buildings and grounds is a daily challenge.

On the 14th February we celebrated our 144 years since being founded. With over 3000 animals through our doors every year the GSPCA is kept busy 24/7 365 days a year helping the animals and community of Guernsey, not to mention many more that we help daily in the ambulance and investigating cruelty, the education talks to courses we run and much more.

With a running cost of over £1600+ a day to care for the hundreds of animals at the Shelter we are always looking for support to achieve their care, the rescue of those we help 24/7 and to maintain and care for the Shelter in St Andrews. We have a 10 year redevelopment plan at the GSPCA to ensure we care for the buildings and look to the future for the generations of animals and the community to come.

The BIGGEST ever achievement of the Shelter has been our new multi-purpose animal welfare building which has been a huge success and an amazing resource for the animals and population of Guernsey. With 14 other buildings on site, 42 kennels, isolation facilities, wildlife units, ponds, aviaries and much more we have a wonderful Animal Shelter that requires looking after and caring for.

To look to the future the next focus are the following projects which help ensure we care for these fantastic facilities where animal lives are saved and cared for 24/7 -

New kennel floors and repairs to the 7 kennel buildings/sections - £31,000 (approximately £5000 to £7000 per section)

Renewing two buildings roofs totaling £30,000

Treating the outer section of the first floor to our kennel and training building and repairs - £10,000

New floors, hot water unit and repairs to our wildlife unit - £8000

New laundry facilities and re-siting one current industrial machine - £9,000

New crusher/compactor facility and waste management - £5000

Fitting out, electrics, services and putting a floor in our charity shop and improve disabled access including the toilet facilities - £4500

Repairs and refurbishing our wildlife/hospital area - £3000

Flooring and fitting out our bird room - £2000

Additional Intensive Care Units & Improvements to the Hedgehog Pens - £5800

These are the 10 main projects we have our focus on at the GSPCA although there are many other projects including full rebuilds we would love to achieve in the coming years.

To find out more about our Wishes and projects or how you can support them you can email stevejbyrne@gspca.org.gg or call 01481 257261

You can see many other wishes by visiting our web page – <http://www.gspca.org.gg/about/our-plans-wish-list>

For many of our smaller wishes and items used daily you can see these on our Amazon Wish List - <http://www.amazon.co.uk/registry/wishlist/25MJPPDAGXHL1>

Another way to help the animals directly in our care is by sponsoring an animal pen or kennel and to become an Angel Pen Pal sponsor download this form and return it to the GSPCA to help us help animals every month - <http://gspca.org.gg/about/angel-sponsorship-scheme-animals-needing-guernseys-everlasting-love>

For a business to become a corporate Angel Pen Pal we would love to hear from you, please download this form and return it to the team here at the GSPCA -

<http://gspca.org.gg/sites/default/files/Corporate%20Angel%20Pen%20Pal%20sponsor%20formnew.pdf>

We also work very closely with St Andrews Floral Group who are helping us improve our grounds and the local natural environment for wildlife and if you are interested in supporting our conservation work please visit -

<http://gspca.org.gg/page/st-andrews-floral-group-conservation-work-gspca>





***1960's & Masquerade Ball
at The Farmhouse Hotel***

Saturday 11th November 2017

£60 a ticket

Tables of 8, 10, 12

Bookings for smaller numbers on request

Drinks reception on arrival

HEADLINING - 'The Day Trippers'

Other entertainment surprises

***Supported by the Farmhouse with a fantastic local menu, The Day Trippers with
amazing music & be amazed with a room decorated by Save the Date***

Bookings please call 01481 257261

Email – fundraising@gspca.org.gg

Full details see our website www.gspca.org.gg



Sami the Jersey grey seal pup after 4 months nearly ready to be released to the wild



We are pleased to report that Sami a grey seal pup who was rescued on a beach in Jersey by BDLMY and the JSPCA just after Christmas starving and unwell is only a few weeks away from being ready for going back to the wild.

Four months on from her rescue she is eating extremely well and after being recently weighed by her carer Geoff George we are pleased to report that she weighs just over 36kg.

The team are overjoyed with her progress at the GSPCA and we are all very excited that she will be soon released back to the wild.

Geoff George Animal Collection Officer and main carer of marine mammals at the GSPCA said "The weight Sami is now is what she should have been 4 months ago and it has been a long road to get her to where she is today."

"Sami is eating between 20 and 30 fish a day and we are currently talking to her rescuers in Jersey to decide on a release site when she is ready which hopefully should be in less than a month."

Steve Byrne GSPCA Manager said "What an amazing transformation with Sami from being a very weak and near death seal pup back in December to now seeing her devouring her fish and swimming around in her rehab pool."

"Thankfully we are through the local grey seal pup season so it is highly unlikely that we will have other young seals but we are at the end of the phone 24/7 for advice and have a web page full of information if you spot one in need."

"It costs around £5 a meal for Sami and if anyone would like to donate to her care and finally feeds or sponsor the wildlife unit monthly please call us on 257261, pop in or via the links on our website."

"Thank you to all that have already helped towards Sami and her care it is really appreciated."

"We will of course keep all up to date on Sami's care and progress at the GSPCA and looking forward to releasing her back to the wild very soon."

To donate towards Sami's care through paypal and the other animals please visit - <https://www.paypal.me/DonateGSPCA>



GSPCA Seafront Sunday - our biggest event of the year!!!

On the 28th May 2017, from 10 until 4pm, the GSPCA will be holding its sixth Animal Welfare Seafront Sunday!

We are extremely grateful to all those that made last years day such a great success and we are hoping this years will be bigger and better. There will be stalls, games, mascot racing, fancy dress, a dog show and much more!

We still have spaces for charities, organisations and art and crafts businesses to have a stall at the event. If you are interested, please contact the GSPCA on 01481 257261 or download an application for from our website:

<http://www.gspca.org.gg/page/animal-welfare-sea-front-Sunday>

Fun Dog Show

There will be a dog show (time to be confirmed) with 10 classes. This is a fun dog show and is open to any breed of dog.

1. Best Rescue
 2. Best Smile
 3. Waggiest Tail
 4. Dog most like its owner
 5. Best male puppy (2 years and under)
 6. Best female puppy (2 years and under)
 7. Best Fancy Dress
 8. Prettiest Bitch
 9. Most Handsome dog
 10. Show us a trick Golden Oldies (7 years +)
- Judge's Favourite

Entries will be £1 and please enter on the day.



Children's Animal Fancy Dress Competition

Again there will be holding a children's animal themed fancy dress competition (time to be confirmed). If you forget your costume there will be a face and nail painter on hand to decorate you or your child. This will take place at the race area for the Giant Animal Race between the Crown Pier and Town Church.

Animal Selfie Show (photo show of your animals)

Not got a dog you can bring down, but own a pet then this is your chance to take part in a show without the need to bring them along. We are asking pet owners to take pictures of their pets and for a donation per class you can enter your cat, rabbit, horse, donkey, stick insect, tortoise, whatever it may be into a virtual pet show. There is even a chance to win with pictures of wildlife you may have taken.



Once again we will be holding a Giant Animal Mascot event to entertain the crowds at our Animal Welfare Seafront Sunday.

This is open to mascots and individuals prepared to dress as an animal and play a fun football game with a rather over sized ball.

We are asking businesses, pubs, individuals or anyone as a team of 5 or an individual and we can make extra teams on the day.

Don't worry about what to wear we will provide the Giant Animal Mascot suit and have over 70 available.

To join our giant animal 5-a-side football game in Guernsey we are asking you to raise funds for the Shelter, ideally a minimum of £15 per person or £70 a team.

All the money raised will go towards helping animals in Guernsey.

For businesses wanting to join in we will feature in our next newsletter, on our website and you can put a banner up on the day.

We are welcoming children to dress up in their own suits and also have a game through the day for a donation.

To register and further details please email - stevejbyrne@gspca.org.gg

Corporate sponsors and businesses get to choose their suits or if they wish to provide their own it must be an animal and we still require the application form completed with the minimum sponsorship.

There are lots of events happening during the Animal Welfare Seafront Sunday from a fun dog show, arts and crafts stalls, live music, kids games, food stalls, picture competitions and much more

This is the sixth year the event has taken place and in previous years we have seen Bernard, Daniel the Island FM Donkey and Roary the GFC Lion and over 100 other competitors.

Steve Byrne GSPCA Manager said "Our Animal Welfare Seafront Sunday is just around the corner and our Animal Mascot event is 5-a-side football which was fantastic fun last year."

"With just over 6 weeks before our big day we are asking for teams or individuals to sign up to dress as a giant animal or character to play a fun 5-a-side football game."

"All the funds raised will help animals in Guernsey."

"It's not a normal game as the ball may well be a little bigger than normal."

"All we ask is a minimum donation of £15 per player or £70 a team, we provide the costume and the fun starts at 2pm on the 28th May."



"Game lengths will depend on numbers and our very own Bernard the GSPCA dog will be in goal for any penalty shoot outs."

"Please do get in touch for more information or check out the details online."

For more details on the Animal Welfare Seafront Sunday please go to -

<http://www.gspca.org.gg/page/animal-welfare-sea-front-sunday>



SEAFRONT SUNDAY ANIMAL GIANT MASCOT 5-A-SIDE APPLICATION

General Information

Contact
Name: _____
Contact
Address: _____
Post Code: _____
Email: _____
Telephone: _____ Fax _____ Other _____
If representing a charity or business please include details
Charity /
Company: _____
Address: _____
Post Code: _____
Telephone: _____ Fax _____ Other _____
Email: _____

Giant Mascot Race Information. Tick as appropriate –

Single Player ☐
Team of 5 ☐
(Minimum donation £15 per person/
£70 a team)

Name of Player or 5
Players if team: _____



Charity: _____ Other
Yes / No Business Yes / No Please specify _____

All proceeds will help animals in Guernsey and the work of the GSPCA

The games will take place along the sea front and will start at 2pm Sunday 28th May. We ask all players to meet at the Tourist Information Centre before 1.45pm to dress up.

This is an animal themed fancy dress fun event in teams of five or we can make teams.
Animal suit / suits to be chosen on the day, or if you are providing your own



Please return all applications to: Steve Byrne, GSPCA Manager
GSPCA Animal Shelter, Rue des Truchots, St Andrews, Guernsey, GY6 8UD
www.gspca.org.gg
Email - stevebyrne@gspca.org.gg Tel - 01481 257261



Spring time baby bird advice

With Spring well underway the GSPCA are asking Islanders to please be mindful of the many fledglings popping up around the Bailiwick.

The GSPCA would like to remind that as a general rule, it is best to leave baby birds alone.

A baby bird has a greater chance of survival in the wild than it has being hand-reared by man as they learn to fend for themselves and how to forage for food by their parents.

Around 2 weeks after hatching young birds in your Bailiwick garden usually leave the nest, just before they learn how to fly.

It is about this time that you find a young bird out of its nest, as it is probably a fledgling. Fledglings are almost fully feathered, able to walk, run and hop on to low branches, and will try to hide in undergrowth where they are fed by their parents. Parent birds are not usually far away and are probably collecting food but will not return until you have gone. Within a day of leaving the nest, fledglings can usually fly enough to keep up with their parents and escape predators.

Please remember to only move them, or encourage them to move, a short distance to safety if they are in immediate danger.

If you have picked up a fledgling, put it back as near as possible to the place you found it. Don't try to return a fledgling to its nest as you may disturb other young birds.

If you are concerned about its safety try to put it nearby on a ledge, or somewhere it will be out of the reach of cats. You may want to use an ice cream container with kitchen towel in and place it in a tree or ledge.

Monitor the situation from a place where you will not be seen or heard as otherwise you may continue to discourage the return of the parents. Do this for at least two hours. You will almost certainly find that the parents have taken care of their youngster within this time.

If, after monitoring, you think a fledgling is genuinely orphaned or sick please call the GSPCA on 01481 257261 and choose the emergency option or bring it to the Animal Shelter where we have hospital cages set up ready for them. Please do not try and care for these birds yourself. If you need further help and advice, again please call us on 01481 257261.

We have already had a number of baby birds including finches, pigeons and ducklings this year.

Nestlings are baby birds that only have a small number of feathers. They are different from fledglings in that they are totally dependent on the security of the nest and will not fare at all well if left. If a nestling is found, contain it as soon as possible in a warm, dark, well-ventilated cardboard box (do not offer water, milk or food as this could make them ill or if done incorrectly worse). If the bird is sick, take it to your nearest veterinary surgeon or to the Animal Shelter or call 01481 257261. Never try to return nestlings to their nests as this may disturb the other babies. Never try to rear nestlings yourself, as they need specialist care if they are to survive and the staff at the GSPCA have years of experience and training.

Please remember handling any animal either domestic, wild, dead or alive may be potentially hazardous. Obvious dangers include bites, scratches and general hygiene issues. The GSPCA advise common sense should be applied in all instances and if unsure please call 01481 257261. Personal hygiene should be taken into consideration after handling any animal whether it is domestic, wild, dead or alive.



Dog owners to take care when walking along the coast

In recent years each winter dog owners are warned to keep pets away from any oily white substances they may find on local beaches. This month the same substance has been spotted once again on Channel Island beaches and the GSPCA are asking dog owners to take care when along the coast.



The substance which is Palm Oil has been recently seen in Jersey, and with Guernsey beach restrictions not beginning until the start of next month, many dog owners will want to take advantage of the nice weather and bank holiday weekend, but need to take care.

In previous years the Environment Department has instructed States Works to remove any substance of this description which may be found on beaches.

Previous public advice has been not to remove the palm oil but anyone who has picked any up should double wrap it in plastic and dispose of it with their normal refuse and to report it to the Environment Department.

Steve Byrne GSPCA Manager said "There will be many dog owners wanting to take advantage of the nice weather and the last few days before the beach restrictions come into place, but at the GSPCA we are asking everyone to take care when out with your dogs."

"Palm oil which is a white oily looking substance if ingested can kill a dog so please keep a very close eye on them when along the coast."

"The main problems if ingested are vomiting and diarrhoea and these can lead to dehydration, particularly in young or small dogs."

"There is also a potential risk of pancreatitis (inflammation of the pancreatitis) which can result in vague, non-specific signs including vomiting and diarrhoea, especially if large amounts

have been eaten."

"The GSPCA would suggest anyone with a dog that has eaten palm oil contact their vet immediately for advice, particularly if the dog is already unwell."

"There is no specific treatment but the dog may need medication to control vomiting and fluids and the GSPCA advise contacting your vet with any concerns straight away."

"The main thing owners can do it prevent exposure and to please take care when along the coast."

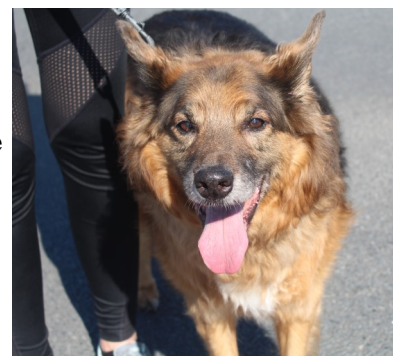
Contact details for the Environment Department and States Works are Environment Services Unit, Tel: 717200 during office hours or env@gov.gg

For contact details of all the vets in Guernsey please see the bottom of this web page.

If you would like to attend a Dog or Cat First Aid with the GSPCA then we

have more set for next month and for details <http://www.gspca.org.gg/services/training-courses>

To see details of the beach restrictions <http://www.gspca.org.gg/about/dog-horse-restriction-beaches-guernsey>



Advice to horse owners—case of Strangles in Guernsey

In Guernsey a case of Strangles has recently been identified and the GSPCA are asking all equine owners to take care to ensure their animals are kept safe and well.

Strangles is a commonly diagnosed infectious disease that affects all equidae worldwide. Caused by the bacterium *Streptococcus equi*.

The disease is highly contagious and is spread by direct or indirect contact. It can affect any age, sex or breed of horse and remains a widely feared disease because of its debilitating effects and its potential economic impact on equestrian businesses.

The severity and number of clinical signs exhibited can vary between individual horses. Young, elderly and debilitated horses are often most susceptible but it is important to remember all horses are at risk. Clinical signs are not usually seen until 3-14 days after the horse has been in contact with the bacterium.

Clinical signs include:

- Depression and dullness
- Loss of appetite
- Nasal discharge
- Development of a cough
- High temperature
- Swelling of the lymph nodes (glands) under the jaw or on the head or neck which can lead to abscess formation at a later stage

Any owners with any concerns should contact their vet as soon as possible for advice and for all vet details in Guernsey you can see them on our links page - <http://gspca.org.gg/links>

Strangles can be spread easily by direct contact between horses or indirectly by handlers, equipment or contamination of the environment. This can lead to large outbreaks with many horses becoming infected if strict biosecurity measures are not put in place and adhered to. For example, the infection can be spread:

- by nose to nose contact between horses
- via equipment shared with infected horses, such as:
 - water troughs where the bacterium can survive for long periods
 - feed buckets
 - grooming equipment
 - tack

The mixing of horses from different areas, such as when at a show and new arrivals to a yard, increases the risk of disease being spread. Outwardly healthy horses are often overlooked as not being a risk but it is important to remember:

- A horse may be infected but not yet showing any clinical signs
- A horse may have atypical strangles
- Carriers can intermittently shed the bacteria for months or years
- Horses not yet fully recovered from the disease can still shed the bacteria

All infected or suspect horses should be isolated immediately, including any other horse(s) they have been in contact with. Isolation plays an important role in preventing further disease spread.

It is important for yard owners to implement a strict isolation procedure for new arrivals to the yard and owners are also advised to prepare a biosecurity management plan in the event of an outbreak. A strangles outbreak can last for many months on premises with inadequate isolation procedures causing continued welfare problems and disruption to the yard.

The Premium Assured Strangles Scheme (PASS), launched by SAC Consulting Veterinary Services, aims to protect horses and yards from strangles infection, reduce disease in local areas, and provide a national control programme with health status certification. All horses on member yards are blood tested on joining the scheme, plus new horses coming to the yard and any potential carriers are identified and treated. For further information please visit www.equinehealthscheme.com.

Strict hygiene and biosecurity plays a vital role in the prevention, control and spread of the disease.

- Disinfecting all food and water containers, clothing, stabling and equipment used by an infected horse is imperative.
- If transporting horses it is good practice to disinfect the horseboxes used before and after collecting any new horses.
- Quarantining new arrivals to a yard is the most effective way to prevent a strangles outbreak.
- Quarantine means no direct or indirect contact between a new horse and other animals, or equipment used by other horses.
- A quarantine period should be a minimum of two weeks. Horses assessed as high risk are advised to be kept isolated for three weeks.
- Horses that appear to be disease-free after this quarantine period only pose a risk if they are a carrier. The blood test will help to detect a carrier status of a horse.
- A vaccine for strangles is available.



Avian Flu Update

The GSPCA would like to pass on an update in Guernsey from the UK authorities about Avian Flu who today have relaxed restrictions due to the mild spring for poultry and bird keepers.

Below is an update in the UK from the Animal and Plant Health Agency (APHA) -



We have today announced <https://www.gov.uk/government/news/updated-measures-to-protect-poultry-against-avian-flu> that all poultry in England are to be allowed outside from Thursday 13 April following updated evidence on the risk posed by wild birds. The requirement to house or fully net poultry in Higher Risk Areas of England, introduced on 28 February to minimise the risk of them catching avian flu from wild birds, will be lifted. All poultry keepers must however continue to implement the enhanced biosecurity measures we introduced on 28 February. This includes taking steps to reduce the risk to their birds, including minimising movement in and out of bird enclosures, cleaning footwear, keeping areas where birds live clean and tidy and feeding birds indoors. If you have over 500 birds there are additional measures which you also must continue to implement: <https://www.gov.uk/government/news/updated-measures-to-protect-poultry-against-avian-flu> .

The ban on poultry gatherings announced on 20 December also remains in place. The decision to lift the housing requirement is based on the latest scientific evidence and veterinary advice, which concludes that the level of risk to poultry in the Higher Risk Areas has now reduced to the same level as that across the rest of England. This is because of changes in the wild bird population: the majority of over-wintering migratory birds have now left the UK, and resident wild waterfowl are at their lowest levels and entering the breeding season when they become less likely to move long distances to forage for food.

The risk of poultry becoming infected from H5N8 remains heightened and countries across Europe continue to experience outbreaks and observe cases in wild birds. Defra is stepping up surveillance of wild birds across the UK to inform our risk assessments. Poultry keepers who are planning to let their birds outdoors on Thursday are strongly advised to take action now to minimise any residual contamination in outdoor areas by following the guidance on [GOV.UK: https://www.gov.uk/guidance/avian-influenza-bird-flu#detailed-advice](https://www.gov.uk/guidance/avian-influenza-bird-flu#detailed-advice). They are also advised to consult with their private vet if they are worried about the risk of their birds becoming infected.

This message was initiated by Animal and Plant Health Agency APHA. Contact apha.corporatecommunications@apha.gsi.gov.uk for more information.

Thanks to the advice the GSPCA have removed covers from a number of aviaries that were covered following the advice when the risks were high.

Steve Byrne GSPCA Manager said "With the number of birds we rescue and care for it was a real worry over the last few months and to have the news has certainly cheered the team as we now come into Spring and already seeing many baby birds needing our help."

"Avian Flu is likely to be a reoccurring risk each year with migrant birds but at least for the time being many birds can now enjoy much more freedom."

"We have many birds in outdoor aviaries at the GSPCA and many are now enjoying direct sunlight through the roof tops once again."

"You can see many of the birds at the GSPCA by joining one of our guided tours at the Shelter and to find out more please visit <http://gspca.org.gg/blog/today-easter-guided-tour-gspca-and-see-behind-scenes-12-19-april-book-your-place-they-are-going> ."

"With Spring it is highly likely you may come across baby birds and we have web pages full of advice by going to <http://gspca.org.gg/animals/wildlife-advice> or you can call us at the GSPCA on 257261."

For sick and injured wildlife advice please visit - <http://gspca.org.gg/animals/wildlife-advice>

Amazing Easter Eggstravagana



From the GSPCA we would like to say a MASSIVE thank you to all involved and supported an amazing Easter Event on Sunday.

The event was all thanks to Island FM who teamed up with Regency Bedding and created an exciting event and fundraiser to introduce Primary School Children to a fun afternoon of Taster Sessions of Alternative Sports and Activities with Outdoor Guernsey at Rue Maingy Activity Centre.

The Sporting activities included Archery, the Indoor Climbing Wall and High Ropes.



It all took place on Easter Sunday at Rue Maingy and with the sun shining a fantastic afternoon was had by all.

100's of children attended with the Grande Finale of a fun afternoon of child development and sport was an Easter Egg Hunt with prizes for all the children.

From a fantastic raffle raising funds for the Shelter to Island FM mascot, Daniel the Donkey, GSPCA mascot Bernard to the Easter Bunny there was plenty to see as well as animals from the GSPCA, fun games and so much to do and see

Steve Byrne GSPCA Manager said "What an amazing day we all had for the Regency Bedding Easter Eggstravaganza on Sunday and there are so many thanks to give out for what was a fantastic day in the Easter sunshine."

"A huge thank you to Regency Bedding for sponsoring the event, Sally and all the team from Island FM that did so much organising, Ant and his amazing team from Outdoor Guernsey, the stall holders, CT Plus, the Cherry Godfrey Cash Shower, St Johns Ambulance, all that made it such a wonderful afternoon and of course our amazing GSPCA team which included Lorna, Kevin, Suzy, Emma, Beckie, Duncan, Georgina, Emily, Ellie, Miles, Madison, Lauren and Roma."

"We had a lot of interest in the rabbits we took along and hopefully have some potentially wonderful new homes being offered to some of those in our care."

"There were 100's of children and it was so lovely to see them all have such a fantastic time."

"The GSPCA stall raised over £500 and £200 is being donated from the Cherry Godfrey Cash Shower and we are awaiting to hear the final total from the team at Island FM but we certainly raised well over £1000 which will help the 400 animals in our care from Sami the seal pup to Catrina the cat and many baby birds."

"We have guided tours today and tomorrow at the GSPCA at 2pm and will be at many of the upcoming Guernsey events but our biggest event of the year the Animal Welfare Seafront Sunday takes place on the 28th May and anyone wanting to get involved please do get in touch."

To find out more about the Animal Welfare Seafront Sunday please visit - <http://gspca.org.gg/page/animal-welfare-sea-front-sunday>

To visit the Regency Bedding website - <http://regencybedding.gg/>

To visit the Outdoor Guernsey website - <http://outdoorguernsey.co.uk/>

To visit the Island FM website - <http://www.islandfm.com/>



GSPCA staff learning new dog training skills

Earlier this year GSPCA staff Seb Goman and Teresa Mourant spent over 6 weeks volunteering to train to complete their Level 1 as a Puppy Assistant at the Animal Shelter.

To complete their level 1 they had to -

- Observe a 6 week Puppy Training Course
- Have an understanding of why 'punishment doesn't work'
- Have an awareness of how stress affects a dog's ability to learn
- Possess a basic knowledge of canine behaviour
- Adhere to the APDT Code of Conduct



The GSPCA run regular training sessions for new puppy and dog owners and are proud to help those pet owners through an essential time settling a new four legged friend into a home. The course we run is the APDT Good Companion Puppy and Foundation Training Award which take place at the Animal Shelter on a Tuesday and Thursday evening (7pm – 8pm) and also on other days and nights when we are able.

The training courses run for 6 weeks and each class lasts for approximately an hour and are a maximum of 6 (or on a rare occasion 7) dogs per class allowing us to give each dog lots of individual attention.

Lorna Prince GSPCA Animal Welfare Manager who organises the classes said "Congratulations and thank you to Seb and Teresa who have recently completed their Level 1 as a Puppy Assistant to help with our training and life classes at the GSPCA."

"Our approach is very much based on life skills, teaching and training using positive reinforcement techniques."

"We want the dogs to learn because they find it rewarding not because they are trying to avoid a punishment or correction."

"We do use the Clicker as part of our training."

"At the classes we teach a mix of basic commands such as sit, down, walking nicely on lead and recall as well as working through focus exercises, calm greeting of people and other dogs on lead and exercises to prevent and stop jumping up."

"We demonstrate activities that owners can do with their dog to help build and strengthen their bond, the dog's responsiveness and thus increase owner control."

"We continually assess each dog and advise on any behaviour problems that the owners may be experiencing."

"Our aim is that people leave the classes with a greater understanding of their dogs and why they do things."

"We try to give the owners the skills to deal with anything that their dog throws at them while helping them to enjoy being a dog owner, after all that's what it's all about."

"Owners and dogs that have graduated from the Puppy classes do have the opportunity to undertake the Good Companion Award."

"Myself and Jenny Mahy take the classes with helpers."

"I am from a canine behaviour background and Jenny is an obedience trainer so we have a good range of knowledge depending on your individual needs."

"We are both members of the Association of Pet Dog Trainers."

To find out more about the APDT please visit <http://www.apdt.co.uk/>



Lorna has a lifetime of experience with a huge variety of breeds. She started out in traditional dog training and 'showing' becoming the Channel Island Junior Handler in the early eighties. She moved from formal dog training to applied canine behaviour when she joined the Rehabilitation Department at Battersea Dogs' and Cats' Home.

During this time it became clear that the most important thing a dog needs is to learn to trust its handler. Since joining the GSPCA she has continued to manage the assessing and rehoming of the Shelter dogs as well as helping to train and rehabilitate family pets. Lorna is dedicated to helping people understand their pets and to improving the dog – owner relationship. Jenny has over 40 years' dog training experience including dancing with dogs and competitive obedience and is committed to improving the dog / owner bond.

Jenny has moved from 'traditional' training techniques and now applies modern motivational training methods that do not compromise the mental and physical welfare of the dogs. The team believe in continued personal development and strive to build upon our skills and experience by attending course, seminars and workshops when we can.

Seb Goman said "I really enjoy working at the GSPCA and with the dogs and to learn these new skills has been great and something I can apply daily in my role looking after the dogs under our care."

Teresa Mourant said "I love working with the dogs and the classes have been wonderful."

"We have both learnt so much and really enjoyed it and will both be carrying on learning more and helping with the classes at the GSPCA."

To find out more about dog training at the GSPCA please visit - <http://gspca.org.gg/services/puppy-and-beginner-life-skills-classes>

Making a lasting difference



The GSPCA is a charity that was founded many years ago and wouldn't be able to carry out its animal welfare work without the generosity of our caring and kind supporters.

With rising costs and thousands of animals each year the GSPCA needs your help as we receive no state aid.

You can help us by leaving a gift to the GSPCA in your Will which allows you to continue helping to improve the lives of animals into the future.

After providing for those you care for, please consider leaving a proportion of what remains to us. A gift like this to GSPCA ensures our animals and those in Guernsey will always have someone to keep them safe.

If you have already left a gift in your Will, please contact Steve Byrne on stevebyrne@gspca.org.gg or call 01481 257261. We can then keep you informed and up to date about developments at the Animal Shelter and our work. We always love to hear that you have left a gift but there is no pressure to say so. We understand that this is a private and personal matter.

Leaving a legacy is not a decision that can be made lightly and we are always happy to discuss this with you or send out additional information.

As a charity, gifts in Wills account for approximately 50% of our total income. We rely on this to continue to give safety and sanctuary to the animals in our care.

We simply couldn't do it without your help and support.

Our charity details are :

Guernsey Society for the Prevention of Cruelty to Animals,

Rue des Truchots, St Andrews, Guernsey, GY6 8UD

Tel: 01481 257261

Email: stevebyrne@gspca.org.gg

Ref: GSPCA Charity No. 003
Non Refundable for cash



DISCOUNT VOUCHER

Haskins Legal


This certificate entitles the bearer to a 20% Discount on the fee note of drafting a Will if a Bequest to the GSPCA is over the kind sum of £250

HASKINSLEGAL
advocates and notary public
HASKINS LEGAL
College Chambers
3-4 St. James Street
St Peter Port
Guernsey
GY1 2NZ
T: 01481 721316
F: 01481 721317
E: info@haskinslegal.com

Shop online, have you seen our range of GSPCA goods...




Shop | GSPCA Guernsey
gspca.org.gg/shop
Search



GSPCA/Hog Logo Child Hoodie
£18.00

Sizes
Child Age 3 - 4


Add to Cart



GSPCA/Hog Logo Adult Hoodie
£23.00

Sizes
Adult Small


Add to Cart



GSPCA/Hog Logo Adult TShirt
£12.00

Sizes
Adult Small


Add to Cart



GSPCA/Dog Logo Adult TShirt
£12.00


Sizes
Adult Small

Add to Cart




GSPCA/Dog Logo Adult Hoodie
£23.00

Add to Cart




GSPCA/Cat Logo Adult TShirt
£12.00

Add to Cart




GSPCA/Cat Logo Adult Hoodie
£23.00

Add to Cart



GSPCA/Donkey Logo Adult Hoodie
£23.00


Add to Cart



Chester the Horse (GSPCA Sweater)
£9.00

Total Price Inc. Postage
Post to UK £17.00 GBF


Add to Cart



Chester the Horse (Hoodie)
£9.00

Total Price Inc. Postage
Post to UK £17.00 GBF


Add to Cart



Bentley Bear
£9.50

Total Price Inc. Postage
Post to UK £17.50 GBF

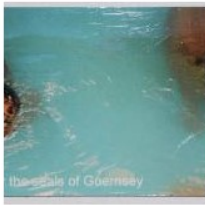
Add to Cart




Bertie Bear
£14.00

Total Price Inc. Postage
Post to UK £22.00 GBF


Add to Cart




Small Seal Fridge Magnet
86mm x 49mm



Small Lion Fridge Magnet
86mm x 49mm



Small GSPCA Fridge Magnet
86mm x 49mm



GSPCA/Cat Logo Child Hoodie

09:23
17/07/2015



Thank you to all involved with the Easter Dog Walk

On Sunday 9th April Island FM and Trim Dog welcomed nearly 50 dogs and their owners to the Annual Charity Dog Walk.

Starting from Liberation Monument at 9.30am on a glorious day all enjoyed the short stroll together to Bulwer Avenue and back.

A registration fee of £5 was collected to support Animal Aid and the GSPCA with the totals raised to be released soon.

There were goodie bags and certificates for each doggie as well as a raffle for the walkers with prizes of up to £100 of Trim Dog vouchers handed out.

Steve Byrne GSPCA Manager said "We are hugely thankful to Trim Dog and Island Fm who supported this wonderful dog walk raising funds for animals in Guernsey."

"It was a stunning day and it was amazing to see so many dogs, many rehomed from the GSPCA."

"We took a stall down and helped out and we are hugely grateful to all involved."

"Between the GSPCA and Guernsey Animal Aid thousands of animals are helped every year and with over 400 at the Animal Shelter every penny helps make a real difference."

To see the event on the Island FM website please visit - www.islandfm.com/win/annual-charity-dog-walk/

To visit the event page for the Annual Dog Walk please go to - www.facebook.com/events/1763853573928336/

To see other upcoming events at the GSPCA and download a generic sponsor form please visit - www.gspca.org.gg/fundraising

To visit the Trim Dog facebook page please visit - www.facebook.com/TrimDogPetCentre/?fref=ts

Here is a link to many pictures of the many dogs that attended thanks to 7 year old Joseph Fox

To visit the Guernsey Animal Aid page please visit - www.guernseyanimalaid.org.gg/

GSPCA recognized with a special international award

The winners of the Ceva Animal Welfare Awards 2017 were announced at a ceremony at the Burlington Hotel in Birmingham recently. The awards recognise the achievements of remarkable people from the farming, veterinary and charity industries, who go beyond the call of duty to better the lives of animals around the world including veterinary and charity professionals, researchers and volunteers. The awards' ceremony on 5th April was during the run up to BSAVA (British Small Animal Veterinary Association) Congress.

The GSPCA had a team of 5 that were kindly flown to the UK to attend the event for a very special reason. Yvonne Chauvel and Anna Paint Senior Animal Care Assistants, Geoff George Animal Collection Officer, Steve Byrne GSPCA Manager and John Knight GSPCA President and Vet were invited along to represent the GSPCA.

The awards each year have had 7 categories to recognise amazing work and individuals helping animal welfare from across the world. Each include finalists with the winner announced on the evening. The awards saw one of the rare occasions when a Special International Recognition Award was added to the awards list and was bestowed on the team at the GSPCA who were shocked, surprised and humbled when we were informed earlier this year.

The GSPCA team were hugely grateful for the wonderful recognition of the 24/7 work carried out in Guernsey especially after some major events including the 25 Slovakian puppies, Olivia the loggerhead turtle, Bonnie the seal pup, the new build, not to mention the other 3000+ animals helped each year by the 20 staff and over 700 volunteers.

The GSPCA award was the last to be given during the fantastic celebration of so many wonderful people and charities helping animals around the world. What the room didn't know that after the GSPCA had been presented the phenomenal accolade GSPCA Manager Steve Byrne had a special award to present to the Ceva team who organise the awards each year.

Not even the GSPCA team were aware as Steve asked them to stay on the stage as he approached the mic to ask all of the Ceva team to come up on stage together for the first time in the history of the awards.

Ceva have supported the GSPCA in many ways in recent years from training staff and volunteers to donating products to help the dogs and cats at the Shelter. They provide a range of goods which we sell at our reception shop area which help reduce stress in dogs and cats and last year were hugely helpful with Olivia the loggerhead turtle.

Ceva created videos and news which they featured on their websites and even donated towards her care and travel back to the Canary Islands. The GSPCA are hugely grateful to the Ceva team for their support and were overjoyed to present a very special thank you to their team.

Steve Byrne GSPCA Manager said "We are all still taking it in as we can't believe that our team at the GSPCA have been recognised in such a special way on an international stage thanks to the Ceva Animal Welfare Awards."

"It was so kind for us all to be flown over to such an amazing evening celebrating amazing people from around the world."

"All of the finalists were amazing and every video shown warmed the heart to see the wonderful work that goes on at all corners of the globe."

"We were so humbled when we were informed of the award earlier this year and as we knew we would be the last in the evening to go on stage I had the thought to do something very special and kind for the Ceva team who help and support us in so many ways."

"Not even the GSPCA team knew but from the GSPCA I snuck on stage a framed thank you certificate to the Ceva team and as we were asked to sit I jumped on the mic to call all of the Ceva staff on stage to join us so all of the guests at the evening could give their team a round of applause for such a wonderful evening and supporting animal welfare in so many ways."

"I can't think of any award that could surpass this Special Recognition in the Animal Welfare World and we are so grateful to all involved for thinking that we at the GSPCA deserve such an amazing recognition."

Yvonne Chauvel Senior Animal Care Assistant at the GSPCA said "What an amazing night with so many amazing people."

"It was so emotional to see so many amazing people helping animals." "I am so thankful for being allowed to attend such an amazing night and we really can't believe it."

Chair of the judging panel Chris Laurence, said: "Judging the huge number of nominations gets more difficult year on year as the numbers increase."

"It is stunning to see how many people give their lives to the welfare of animals and it makes us feel very humble to see the lengths to which many people go." "The fact that we have found winners amongst so many deserving people and organisations was really hard work."

Anna Paint GSPCA Senior Animal Care Assistant "This is the first time I've been on a trip to the UK on a plane in over 20 years and what a wonderful night we all had." "It was truly wonderful and thank you to all involved."

If you missed the awards, would like to see the GSPCA go on stage and also their thanks to Ceva you can see the night that was streamed live by going to -

<http://www.cevawelfareawards.com/>



Poison Garden plans at the GSPCA with St Andrews Floral Group—could you help?



With all of the conservation work going on at the GSPCA and planting thanks to St Andrews Floral Group we have to stop and think of the plants that can put our pets at risk.

This thought and after a recent BBC Guernsey interview has prompted the GSPCA and St Andrews Floral Group into putting together a garden display to help pet owners. Over the last 18 months vast improvements have been made to the grounds to help wildlife and also visitors at the GSPCA and we are now looking at putting together an educational area to help pet owners understand some of the challenges of plants you need to avoid or can use safely.

Ann Wragg Group Leader from St Andrews Floral Group said "There have been so many individuals, groups and businesses that have been helping us improve the grounds at the GSPCA for the visitors and wildlife but we still have many more areas we are looking to improve and care for."

"One of the projects we are looking for support with is an educational garden area to teach pet owners which plants you need to avoid as they could be dangerous to your dogs and cats and which are perfectly safe."

"Until listening to a radio interview on BBC Guernsey recently I didn't realise how dangerous some plants can be to pets."

"If you would like to help support the conservation and educational projects at the GSPCA with St Andrews Floral Group please do get in touch."

Steve Byrne GSPCA Manager said "With around 10,000 dogs and 10,000 cats in Guernsey we all have a duty of care to our pets."

"It's great choosing pretty flowers and plants at the garden centre but if we own a pet we really need to stop and think 'is it safe for my four legged friend?'."

"We are now working with Ann and the wonderful team from St Andrews Floral Group to plant an educational area to help pet owners in Guernsey and visitors to the GSPCA."

"With so many plants that create a risk to our pets we have to watch where we plant in our gardens and also the plants in our homes."

"Many of us know of the risks of certain plants like foxglove but from lillies to geraniums there are many we use we need to take caution with."

"We do run first aid course of dog and cat owners at the GSPCA and talk about plants that create risks and the next sessions are in May."

"If anyone would like to support this garden area or any of the conservation work or projects at the GSPCA please do get in touch."

Ann continues "I was very saddened to hear the interview with Jinny whose 2 dogs were poisoned by a common garden plant."

"I was not aware of the extent of the problem until I did some research and found that there are over 30 plants that are toxic to pets, some causing death."

"I wanted to do something to raise awareness of the potential risks and doing something at the GSPCA where St Andrew's Floral Group are working in the grounds seemed a good way to spread the word."

"The idea of a Poison Garden come to mind. It is more about people making a considered choice when buying plants for their gardens that are pet safe e.g. choosing Bizzie Lizzie as opposed to Begonias, Fuchsia instead of Marigolds."

"Anyone who would like more information on bad plants should follow the links on the GSPCA website."

"If you would like to donate plant for the Poison Garden please get in touch through GSPCA social media. Queux Patio plants are going to consider extending their Opals allergy scheme to highlight plants which are not pet safe to help."

If you would like to get involved or like to support us in improving the grounds or facilities you can email the GSPCA Manager stevejbyrne@gspca.org.gg or Ann Wragg from St Andrews Floral Group a.hw@icloud.com

To see a list of plants dangerous to dogs by the Dogs Trust please visit -
<https://www.dogstrust.org.uk/help-advice/factsheets-downloads/factsheetpoisonoussubstances09.pdf>

To see a list of plants dangerous to cats by the Cat Protection please visit -
<http://www.cats.org.uk/bedford/feature-pages/plants-poisonous-to-cats>

To see our upcoming first aid courses please visit -
<http://www.gspca.org.gg/services/training-courses>

To see more about the work of St Andrews Floral Group please visit -
<http://www.gspca.org.gg/page/st-andrews-floral-group-conservation-work-gspca>



A note on rabbit welfare...

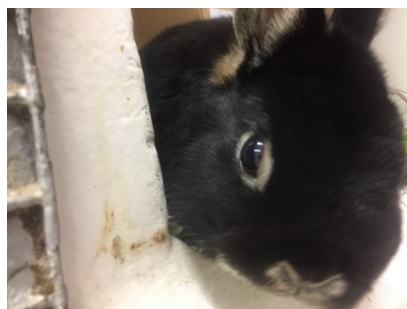
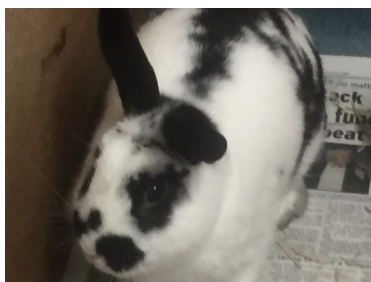
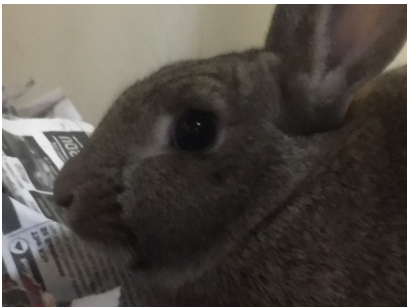
For years rabbits were kept in hutches at the bottom of the garden and given little exercise or entertainment. Animal welfare has come along way, but in some cases, rabbits are still left behind. Under the new Animal Welfare (Guernsey) Ordinance 2012, rabbits accommodation should:

- a) be escape proof and vermin and predator proof,
- b) include a shelter area of at least one third of the total accommodation space that is large enough to allow every rabbit that is accommodated to shelter at the same time,
- c) provide a rabbit with enough space to:
 - i) take a sequence of at least three unhindered consecutive hops from one end of its accommodation to the other (no smaller than 180cm long x 60cm wide for an average rabbit),
 - ii) allow an adult rabbit to stand on its back legs with ears fully erect without its ears touching the roof (about 75cm high for an average rabbit),
 - iii) allow a rabbit to lie fully outstretched in any direction without touching the sides of its accommodation and to turn around unimpeded,

For a full copy of the welfare codes and guidance notes for all species please visit
<http://www.gov.gg/article/113127/Animal-Welfare-Codes>

Rabbits should be given daily access to a run or exercise area and ideally live with at least one other rabbit. Rabbits enjoy toys and regular enrichment to keep their minds active. Providing these basic needs will ensure you have a happy, contented pet and create a much happier relationship between you and your pet.

At the GSPCA we currently have lots of rabbits in need of loving new homes



Alfie and Archie are two lively, happy little dogs with lots of energy and personality.

They love walking and playing with toys and being busy.

Both dogs are good with other dogs but can be vocal on lead at times so some training may be needed to help with this.

Both the boys love their food and their afternoon naps sitting on your lap.

Unfortunately Alfie and Archie are not suitable to live with cats.

If you think you can offer this lovely pair a good home please contact the Shelter.



Paddy is a very sweet boy looking for a family happy to enjoy long walks with him.

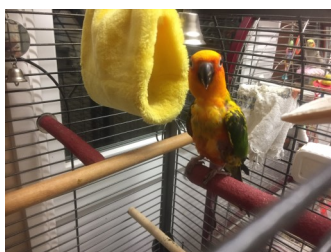
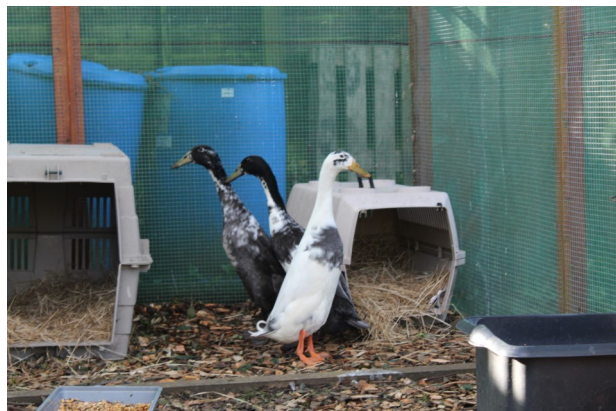
We are working hard on his recall but this will be a focus for his new family as he doesn't sometimes 'wander off'.

Paddy loves people and is good with other dogs. He can be a bit shy and worried by loud, unpredictable things so he would not cope with very young children.

He really enjoys training and will be starting a 6 week Course to help build on his skills.

When dogs come into the GSPCA we aim to assess and rehome them as quickly as possible. The rehoming team will keep 'dog rehoming applications' for 1 year and contact people if we feel we have a suitable dog. We do urge people who are looking for a dog to send an application into us, regularly check our website and contact us if you see a dog you are particularly interested in.

This year the shelter has been busy trying to find homes for small birds. We currently have a large number of small, domesticated birds, like budgies, at the shelter. All birds can be bought with cages if they are needed although some birds are for aviary homes only.



We have more animals available and other arriving all the time. Please visit our website or call the shelter if you are interested in any of them, or would like to arrange a visit.

Taking on any animal is a big responsibility. They require care, attention, time and love.

We urge everyone to seriously consider whether they can provide for an animal and avoid impulse buying.

GSPCA Adoption Charges:

Dogs	£260	Guinea Pigs	£30
Cats/Kittens	£105	Birds (varied species)	From £16
Rabbits	£42.50	Chickens	£8
Ferrets	£40	Mice/Rats/Hamsters/Degus	£8

GSPCA FLAG DAY!!



We are looking for volunteers to give up an hour or two to help on our flag day. If you would be able to help, please contact Michelle Champion - fundraising@gspca.org.gg or call the shelter on 257261

Saturday 19th August - Various Locations

Last year we raised over £3000!!

Feel free to bring your dog or dress up in one of our mascot suits!



Ghost and Gizmo two loving ferrets in need of a new home

How your Business can help the GSPCA & Corporate Sponsorship

There are many ways in which your business can get involved with supporting the GSPCA and it provides an excellent opportunity for companies to reach out to animal lovers and find an audience that believes deeply in Animal Welfare.

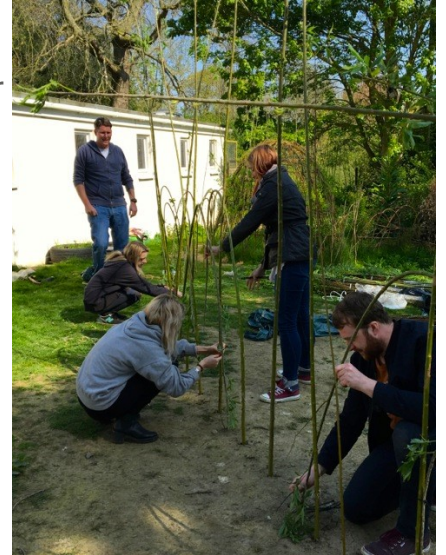
There are many ways to get involved and sponsorship opportunities are available and can be tailored to fit the joint needs and focus of both your company and the GSPCA.

From corporate volunteering opportunities and employee fundraising to sales promotions and sponsorship, there are great opportunities for you and your company to create a mutually beneficial partnership with the GSPCA.

Why choose the GSPCA?

By forming a partnership with the GSPCA your business can provide huge benefits to you and your company including:

- Increasing staff AND customer loyalty when associating with only all Animal Welfare organisation in Guernsey.
- It gives you and your colleagues the opportunity to gain a great sense of pride and achievement through life-changing fundraising challenges.
- Getting your colleagues motivated at work and feeling inspired by giving something good back to society.
- Helping your company achieve CSR objectives and providing engaging content for CSR reports.
- Increasing staff enthusiasm by your company working with such a passionate organisation as the GSPCA and in turn potentially reducing staff turnover.



We need YOU to help us become your company's charity of choice!



Please nominate the GSPCA

If your company has a charity of the year programme, why not speak to your company's charity committee about how to make the GSPCA your charity of choice?

You may be asked by your company to vote for a charity or choose your favourite charity to be on a shortlist. We totally rely on YOU to please put the GSPCA on that list!

By making the GSPCA your company's charity of choice you will also benefit from being associated with only all Animal Welfare organisation in Guernsey.

If you want more information on how you can help the GSPCA become your charity of choice or charity of the year get in touch with Steve Byrne GSPCA Manager stevejbyrne@gspca.org.gg



Become an exclusive Build Partner

The Build Partner programme is designed to meet the building costs associated with our newest £1.3 million multi-purpose animal welfare building. The building replaces five existing structures that have become unusable with age.

Our new building incorporates a welfare cattery, quarantine and isolation facilities, a secure transfer location while also providing logistical and organisational spaces and facilities for the day to day running of the GSPCA.

Products

If you are a retailer or manufacturer and would like to develop products with us, then please do get in touch.

At the GSPCA we have a range of logo'd goods, collection boxes and counter boxes. If you or your business is interested in helping raise funds through these for the Shelter please email stevejbyrne@gspca.org.gg

Sponsorship of Events

Maybe your business would like to Sponsor all or part of a GSPCA event? The major annual events we hold each year are –

- We hold monthly Bingo Nights at the Market Bistro
- GSPCA Purple Week – February
- Big Fun Family Lunch
- Easter Bunny & Egg Hunt
- Animal Welfare Seafront Sunday
- GSPCA Cupcake Week
- World Stray Day – April 4th
- Summer Fair & Dog Show
- GSPCA Animal Awards
- World Animal Day – 4th October
- GSPCA Ball
- Santa Paws Walk & Christmas Fayre



By sponsoring one of these events we can include your business in promotional material, our supporters newsletter, and online with our web site and social media.

Each year we also look for local businesses to Sponsor players for the Animal Welfare Seafront Sunday Giant Animal Mascot 5-a-side and for more details please go to -

<http://www.gspca.org.gg/page/animal-welfare-sea-front-sunday>

CSR Volunteering

Whether an individual or a group, here at the GSPCA we can provide CSR opportunities for you and your team to help out at the Animal Shelter.

From individual projects to the daily work, events to administration there is something for everyone.

To find out more please go to - <http://www.gspca.org.gg/about/corporate-and-group-days>

Many of the volunteers that have helped through their work place have continued to volunteer at the Shelter during their days off and we are very thankful to them for their support.

If your business has skills or expertise in a particular field and you would like to donate time or resources we would love to hear from you.

Fundraising

There are many ways to raise funds for the GSPCA in the work place. From dress down days to dress up days, issue GSPCA pens to staff to a sponsored event, selling cupcakes for break to a sponsored silence for those chatty staff members.....

If you have a great idea please let us know or have a look at others and download a sponsorship form by going to - <http://www.gspca.org.gg/fundraising>

Wish List & Plans

Maybe your business would like to sponsor something specific to the GSPCA. We have an ongoing page dedicated to much needed items and appeals and you can see these by going to - <http://www.gspca.org.gg/about/our-plans-wish-list>

Membership

As a charity we are made up of members who pay £10 a year to support the work of the GSPCA and for this they receive a number of benefits including a quarterly newsletter.

If your business wanted to join the GSPCA of behalf of your team and be part of the leading animal charity in Guernsey and receive updates and copies of the quarterly newsletter then please contact stevejbyrne@gspca.org.gg

Newsletter & Advertising

We are looking for a sponsor for our quarterly newsletter. If you are interested please email stevejbyrne@gspca.org.gg

We would also like to hear from you if you would like to join us in sponsoring advertising for animals in need of homes or campaigns.

Become an ANGEL

ANGEL is the newly launched animal pen and section sponsorship scheme and if your business is interested in having your business featured on the ANGEL Sponsorship Board in our main car park and help directly towards the many animals in our care please contact stevejbyrne@gspca.org.gg

To see details on the scheme please go to – <http://www.gspca.org.gg/about/angel-sponsorship-scheme-animals-needing-guernseys-everlasting-love>

Talks and Training

If your business would like a talk about the work of the GSPCA or potentially have training needs then please get in touch. To find out a little about our education programme please go to - <http://www.gspca.org.gg/services/education-and-schools>

If your business would like a guided tour of the Shelter then for a donation we can arrange a member of staff to show you around the facilities and talk about the hundreds of animals in our care.

If you would like to discuss how your business can help support the GSPCA then please contact GSPCA Manager Mr Steve Byrne on 01481 257261 or email stevejbyrne@gspca.org.gg

Geoff George a finalist at the ADCH & Petplan Awards

Petplan and the Association of Dogs and Cats Homes (ADCH) have joined forces for the fifth year of the Animal Charity Awards. The awards celebrate the outstanding work of staff and volunteers in animal charities and not-for-profit organisations across the UK, Ireland and Channel Islands.

The team at the GSPCA are overjoyed to report that Geoff George GSPCA Animal Collection Officer from nearly 5000 nominations is one of three finalists for the Animal Charity Employee of the Year.

Geoff has worked at the GSPCA for over 20 years and from rescuing dolphins to caring for hedgehogs, working 24/7 to rehabilitating seals, transporting turtles to hand feeding baby birds, helping owners with their pets knocked over to catching stray dogs, answering the phone to fund raising Geoff is a huge part of the Shelter and we are all extremely proud of this wonderful achievement recognising his phenomenal commitment to animal welfare.

Geoff George GSPCA Animal Collection Officer said "It was such a surprise to be told I was a finalist for the Petplan and ADCH Animal Charity Employee of the Year."

"I can't believe in nearly 5000 nominations that this is actually happening."

"They have invited me along to the awards which happen later this month where we find out the results."

"It's a busy time at the GSPCA with rescues and over 400 animals at the Shelter and it was so kind of the person whoever nominated me."

Steve Byrne GSPCA Manager said "We are all so proud of Geoff as he works so hard and is always there for an animal in need."

"From Olivia the turtle to the Slovakian puppies, Sami the seal pup to so many others Geoff has been a part of so many animals rescue stories and whether helping in the middle of the night or all day and missing lunch he is a credit to the GSPCA."

"The ADCH are all invited to Guernsey in July as we host a meeting and we are looking forward welcoming many of the 130 charities that make up this wonderful association that we take an active part in as I volunteer on the committee and to work with so many like minded charities is a real joy."

"It has been an amazing few months as Geoff has been a finalist in the Guernsey Press and Specsavers awards, the GSPCA has won the Guernsey Community Foundation Charity of the Year and last week we received the Ceva Animal Welfare Special Recognition Awards on their international stage."

"We have a wonderful caring team of 20 paid staff and over 700 active volunteers and help over 3000 animals a year and we are all wishing Geoff luck later this month at the ADCH and Petplan Awards."

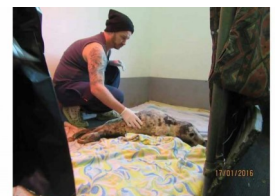
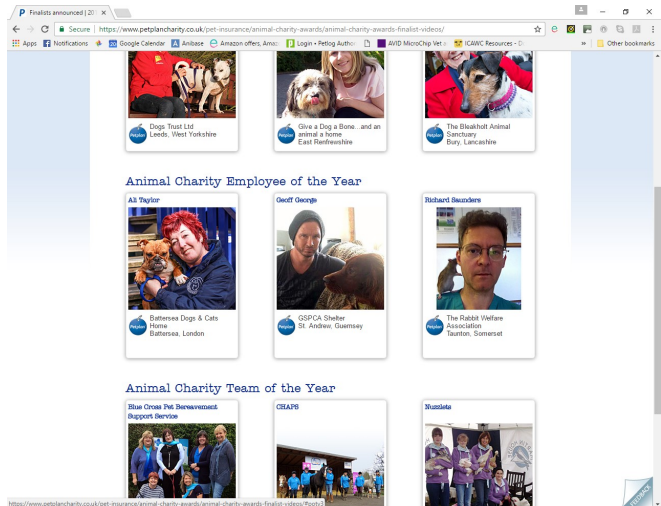
"We will all course keep everyone up to date on how Geoff gets on at the awards evening later this month."

Recently a film crew visited on behalf of the awards and we look forward to the GSPCA being show cased in front of 500 charity workers, vets, companies, retailers and volunteers.

To find out more about the awards please visit - <https://www.petplancharity.co.uk/pet-insurance/animal-charity-awards/animal-charity-awards-finalist-videos/>

To find out about the ADCH please visit - <http://www.adch.org.uk/>

To see some of the awards and recognition the GSPCA have been kindly bestowed please visit - <http://gspca.org.gg/page/awards-recognition>



Volunteer Vacancies

Would you like to work with animals in Guernsey?

At the GSPCA we currently have over 400 animals in our care and work 24 hours a day 7 days a week.

Without volunteers we couldn't carry out the vital animal welfare work. We are currently looking to find volunteers that can help in all areas and especially help us cover the ambulance work which we have carried out as a 24 hour service for over 40 years.

Our Volunteer Wardens help ensure between 6pm and 8am 7 days a week and weekends that any rescues, collections of strays or other emergencies are responded to and we are also looking for wardens to help on Saturday and Sunday between 8am and 6pm.

To become a volunteer warden you will need a driving licence and a passion for helping animals and the local community.

We have a fantastic team of volunteer wardens which help ensure we are able to respond to emergencies 24 hours a day and if you think you could help please come along to one of our volunteer induction evenings or contact the GSPCA Manager Steve Byrne.

Steve Byrne GSPCA Manager said "We have over 700 volunteers that help us every year and we are hugely grateful to each and every one for all of their support."

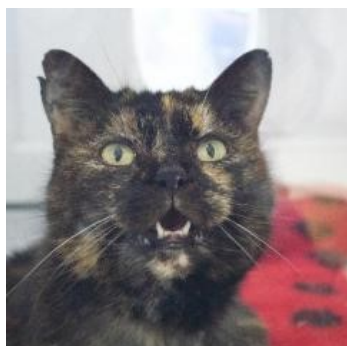
"We are currently looking to find volunteers that can help us cover our emergency service which is a hugely varied and exciting role."

"If you think you could become a volunteer warden or would like to help in any of our other roles please do get in touch."





Animals come into the shelter for a variety of different reasons. We need to do the best we can for every animal that comes through our doors. On average it costs £15 to care for a dog, £10 for a cat, £6 for the smaller mammals. By sponsoring an animal pen you can help 1000's of animals that find themselves in the shelter each year.



The GSPCA takes in hundred of cats in each year, both stray cats and those given up for re-homing. Our cattery is a very busy department and usually has a waiting list. We aim to all animals on site as quickly as we can, but occasional we do have animals at the shelter for long periods.

This is Blackie who is a lovely older lady who is looking for a child free home as an only pet. When Blackie came to us she had awful sores around her bottom area and also lots of scabs all over her body, after being treated with steroids her skin and coat are now lovely, however these may reoccur. Blackie is quite a busy cat and loves her food, this lovely lady would benefit from a quite home as she will get upset with lots of noise around her.



We currently have two tropical fish tanks which we are looking to rehome as two separate tanks. The poor fish were rescued and lucky to be alive and we would love to find them a loving new home.



We also need to look after numerous species of wildlife. If this is where your interest lies, why not sponsor a hutch for a hedgehog, or an aviary for rehabilitating birds? Remember Oliva the loggerhead turtle? A recent video was featured of her release which saw over 1 million views in just a few days on the Dodo website



To become an ANGEL, please fill in and return the form which you download online or pop into the GSPCA Animal Shelter or call us on 257261 to post one.

How to Make a Donation

You can make a donation to the GSPCA via any of the following methods:

- Visit the GSPCA website at **www.gspca.org.gg** and donate online via PayPal or Just Giving.
- Visit the Animal Shelter and complete the paperwork on site.
- Make a monthly donation by completing a standing order form (available online or via the GSPCA by calling us on 257261).
- By post to GSPCA, Rue des Truchots, St Andrews, Guernsey GY^ 8UD





Pen Pal Sponsorship at the GSPCA

Support animals each month in Guernsey through a donation or by monthly giving

Animals come into the shelter for a variety of different reasons. We need to do the best we can for every animal that comes through our doors. On average it costs £15 to care for a dog, £10 for a cat and £6 for the smaller mammals. Our Angel Sponsorship Scheme asks supporters to sign up to a monthly donation of as little as £2 a month. You can sponsor a specific species, such as a kennel, hog house or cat pen, or donate to the whole shelter. Donators will have a plaque on the wall of the GSPCA, making this a perfect gift or way to remember a loved one. If you donate £5 a month, you will receive a free t-shirt or polo shirt, and if you donate £10 a month, you will receive a free hoodie. All donators will receive our quarterly newsletter, car sticker, certificate and GSPCA membership.

I would like to become a GSPCA ANGEL Pen Pal Sponsor. When completed return to GSPCA Animal Shelter, Rue des Truchots, St Andrews GY6 8UD

I would like to sponsor (please tick) ☐ A Kennel ☐ A Rabbit Pen ☐ A Hedgehog Unit ☐ A Cat Pen ☐ A Ferret Pen ☐ The Wildlife Unit

This is for (please tick) ☐ For me ☐ As a gift ☐ In memory

Please send my quarterly Newsletter by (please tick) ☐ By post ☐ By email

I would like to receive information about GSPCA events: ☐ Yes ☐ No

Title Name

Address

Postcode

Email address

(by providing us with your email/telephone number you are giving permission for the GSPCA to contact you by these means with the GSPCA Sponsor Scheme information)

If you are making a gift of your sponsorship please fill in the name and address of the recipient below.

Title Name

Address

Postcode

Email address

What is the occasion?

Please give any relevant date

If you are sponsoring as a gift or in memory of a pet please write the name and short message below -

Name

Address

Bank Details - I enclose a cheque/postal order or would like to make a donation of £ (made payable to 'GSPCA')

To pay by credit/debit card, please complete your details & amount above & your card number below.

Delete as appropriate Access / Visa / Mastercard / CAF charity card / Maestro

Card number

Expiry date

Valid from

Issue no. (Maestro)

You can donate online with Paypal via our website www.gspca.org.gg



ALL NEW ANGEL PEN PAL
SPONSORS TO RECEIVE FREE
VISITORS ENTRY CARDS TO
THE GSPCA



If you are interested in volunteering for the GSPCA, please come along to one of our Volunteer Induction evenings. If you would like more information on the volunteering or fundraising available, please email Steve Byrne: stevebyrne@gspca.org.gg

VoLuNTeER.Gg
VOLUNTEER IN GUERNSEY

WE'RE QUIETLY LOOKING AFTER PEOPLE, PAWS,
PROPERTIES & PLACES THAT YOU KNOW & LOVE



Pomeranian Leo (re-homed from UK) at Pleinmont, SW Guernsey, where NTG have many miles of cliff path

Leafy lanes, miles of cliff paths, a nursery school, rural woods, fields, rambling farmhouses and cosy cottages - they are all part of what The National Trust of Guernsey looks after and shares with our island community.

The National Trust of Guernsey does all of its work on a voluntary basis. Properties, lands and miles of cliff paths require year round maintenance. We rely on your support, be it by donation or membership.

IF YOU WOULD LIKE MORE INFORMATION ABOUT OUR MEMBERSHIP SCHEMES FROM AS LITTLE AS £20.00 PA. PLEASE VISIT OUR WEBSITE WWW.NATIONALTRUST.GG

Membership gives access to all NT properties & places throughout the UK and many other worldwide Trusts

Birthday parties at the GSPCA

At the GSPCA we have seen a fantastic response to our recent Birthday and Special occasion guided tours and have already got many booked in over the coming weeks. (Booking form at base of page)

From young to old we now offer a unique experience for a loved one, family member or friend to see behind the scenes at the GSPCA.

Steve Byrne GSPCA Manager said "This year we have started offering unique birthday and special guided tours and they have been proving hugely popular."

"We have also now teamed up with Island Mums and provide card holders a discount on this wonderful experience."

"Our special tours include a behind the scenes tour of the GSPCA in St Andrews with a focus on the special person who may be celebrating a birthday, anniversary or even a retirement gift."

"Each tour is unique as the animals in our care vary from one week to the next and previous one's have helped feed baby birds to Olivia the turtle."

"You can even hire our events room and we have a great caterer who can help us help you provide the full birthday party for you child or loved one."

"Please do get in touch if you would like to know more and to see previous tours please visit - <http://www.gspca.org.gg/search/node/birthday%20tours>."

If you would like to bring a private group or party to the GSPCA for a visit and tour at the Animal Shelter we can arrange this in advance.

We ask for a minimum donation of £60 for a group of 8 and an additional £5 per person with groups larger than 8 (restrictions do apply with children to adult numbers).

We can provide a birthday or gift pack if the tour is for a special occasion.

We have a large events room, tables, chairs, projectors, speakers with mic, and a number of toys or things for children on request.

For details on room hire please check out - <http://www.gspca.org.gg/services/room-hire-gspca>

Why not make it a full event and arrange for food, a cake or more all of which can be delivered through <http://www.kiddiescatering.biz>

Some extras could include

Party Food Supplied by Kiddies Catering <http://www.kiddiescatering.biz/>

Surprise Adoption for a year of an animal pen - minimum donation of £20 for an adoption pack for a year to include a plaque at the GSPCA

Room hire is available in a spacious room next to toilet facilities

Games with prizes can be supplied on request

Hire of giant animal, minion or Olaf suit

Other bespoke packages available

If you are a school or educational group please visit our page for this by clicking here.

Guided tours of the Shelter take about 60 to 90 minutes and it is your opportunity to see behind the scenes, although for animal welfare reasons there are areas that are unable to be viewed.

If the event is for a special occasion the birthday or lucky individual will receive special treatment and be allowed some unique experiences holding and possibly feeding some of the animals in our care.

We already have many bookings over the next few months, you can book after school for a 3pm, 4pm or 5pm event. Weekend tours tend to be at 11am or 1pm (please ask for other times or evening tours).

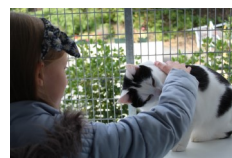
If you are interested please email stevejbyrne@gspca.org.gg or call the GSPCA Manager Steve Byrne on 01481 257261 to discuss details.

Island Mum cardholders can receive a 10% discount on special tours, please see this link for details - <http://islandmums.com/guernsey/gspca-birthday-parties/>

If you are a school or educational group please visit our page for this by clicking here.

If you are interested in coming along to an organised guided tour we hold this in the school breaks, please visit this link for details - <http://www.gspca.org.gg/services/guided-tours-gspca>

^{Page 32}
We are now open 7 days in certain areas for visitors and to find out more please visit - <http://www.gspca.org.gg/page/gspca-opening-visiting-times>



Young men selling paper planes to help animals in Guernsey

In April two young lads came to visit the GSPCA.

The reason for the visit was that they had raised £16.40 to help the animals at the GSPCA.

The two young men had a 'paper sale' and sold paper planes, paper crackers, paper dogs and fortune tellers for the GSPCA.

They were selling them for 10p each which meant a lot of work to help raise the £16.40 in one afternoon.



A huge thank you to Toby (5) and Oliver (8) who came in with the donation and also to their friends Harry (9) and Jimmy (8) who all go to Vale Primary School.

Michelle Champion GSPCA Charity Shop Supervisor & Warden greeted the lads at the GSPCA reception said "What lovely lads and so kind of them to raise the funds to help the many animals we have at the GSPCA."

"They must have worked so hard and I think when they are older they would make great volunteers for the GSPCA in the charity shop or helping in any department."

Steve Byrne GSPCA Manager said "What wonderful young men Toby, Oliver, Harry and Jimmy are raising funds to help the many animals at the GSPCA."

"We are so touched with the many ways we see the young of today working to help raise funds for animals at the GSPCA many of whom are sick or injured."

"There are many ways to support us at the GSPCA and if anyone would like to do something or get involved please do get in touch we really do appreciate the support."

"This weekend we are appealing for volunteers to help at our Easter Sunday event at Rue Mainguy with Island FM, Regency Bedding and Outdoor Guernsey between 10am and 4pm and tickets are onsale on the Island FM website for this amazing Easter event."

For lots of ways to fund raise for the GSPCA please visit - <http://gspca.org.gg/fundraising>

To get in touch please email fundraising@gspca.org.gg, pop in or call 01481 257261



Catrina the cat nearly died after being hit by a car

Do you remember Catrina the old stray cat that was hit by a car earlier this month?

Catrina due to her injuries spent over a month at the vets and is now back in the care of the GSPCA and we are pleased to report she is improving daily despite needing a complicated operation and regular treatment and physio since her accident. Staff and volunteers are working daily with Catrina to help her improve and all have a soft spot for the sweet but cheeky cat.

Helen Holmes GSPCA Admin Manager who also works on the blocks to care for animals said "Yesterday I was helping Anna with Catrina to clip her nails and she is so lovely."

"Catrina has been through so much and it is so nice to see her improve each day."

Anna Paint Senior Animal Care Assistant said "From how poorly Catrina was when she was rescued to today she has improved massively but has a long road ahead of her."

"Each day we spend time with her to improve her strength in her pelvis and legs and we have to take care with her as she wants to jump and play far more than she is ready for."

Steve Byrne GSPCA Manager said "From seeing Catrina at the vets on a drip not able to stand to how she is today really warms the heart."

"When Catrina was found it was a cold winters wet evening and she was collapsed and extremely thin with multiple injuries."

"Catrina continues to need veterinary care and treatment and we continue to appeal for donations towards this loving cats care as well as the 400 other animals at the GSPCA."

"You can become a sponsor to donate monthly to help cats like Catrina, donate online, call 257261, by post or at the Shelter in St Andrews and thank you to all that have donated so far."

Could help support our work, here are a few ways to donate:

- Via Paypal or the Account Details are:
Bank - **HSBC**
Payee Account - **GSPCA**
Sort Code - **40-22-25**
Account Number - **22076233**

- By calling **01481 257261**



We thank you for all of your support. If you would like any more information on ways to support our work please contact GSPCA Manager Steve Byrne:
stevebyrne@gspca.org.gg, **01481 257261**

<http://www.gspca.org.gg/about/our-plans-wish-list>

On our Wish List page you can see a link to our Amazon Wish List which is a great way you can help us care for the animals at the Shelter, as it is full of items that we really need here at the GSPCA.

GSPCA Charity Shop

The on-site GSPCA Charity Shop has this month welcomed three new faces who will be helping to run the on site shop to raise much needed funds for the hundreds of animals in our care and the thousands we help each year.

We are currently appealing for a kind company to help put a floor into the shop area which has currently got bare concrete.

We are looking at options of vinyl tiles as we allow dogs to visit the shop and appealing for either a floor company to help or a kind donation to help floor our shop.



Joining the GSPCA shop team are Michelle Champion who will head the shop area and Hannah Lesbirel and Emma Topley.

Once the floor is in place the shop will be manned 7 days a week Monday to Saturday 9am to 5pm and Sunday 11am to 4pm with opening on some bank holidays.

We will also then have a till in the shop and a phone line to speak to the team as well as a corner where you can get a hot or cold drink and snack.

So please if you can help us floor the shop email stevejbyrne@gspca.org.gg or call 257261

Michelle Champion GSPCA Charity Shop Supervisor said "Hannah, Emma and I are all very excited to be helping run the GSPCA Charity Shop as it helps raise funds to rescue and care for 1000's of animals every year."

"The great thing about the GSPCA Charity Shop is that you get to see the very animals you are helping by buying goods in the shop as you pass them to get to the shop."

"We are currently appealing for help to put a floor covering in the shop ideally of vinyl tiles or similar which is approximately just short of 15 by 5 metres and any help would be hugely appreciated."

"It would be amazing if a flooring company would help support us or we have had quotes of around £900-1000 if someone would like to donate towards this much needed project."

Steve Byrne GSPCA Manager said "This month we have welcomed Hannah, Michelle and Emma into the team to help run the shop at the GSPCA."

"The Charity Shop area helps raise much needed funds at the GSPCA where we have over 400 animals in our care from Sami the seal pup to Paddy the bull terrier."

"We are currently appealing for help to put a floor down in our shop area and would love to hear from anyone that could help us with this much needed project."

"If you can help please email me on stevejbyrne@gspca.org.gg or give us a call on 257261."

"You can see many of our wishes on our Wish List page and love to hear from anyone that would like to support our work and the animals in our care."

To see some of the goods on sale in our Charity Shop please visit our facebook shop page - www.facebook.com/pg/GuernseySPCA/shop/?rid=1333532786725761&rt=8&location=homepage_stream

To see details of our shop opening hours please visit - www.gspca.org.gg/page/gspca-onsite-charity-shop

To see many of our wishes please visit - www.gspca.org.gg/about/our-plans-wish-list

Guernsey Gas helping keep the animals warm at the GSPCA



After hearing that a new gas boiler was on the GSPCA's wish list for improvements to their facilities, Guernsey Gas has stepped in, fitting and providing a brand new Vaillant gas condensing boiler for the animal welfare charity.

Steve Byrne from the GSPCA explained: "Our old boiler had fallen into disrepair."

"Without hot water we are unable to carry out many of the tasks required to care for some of the animals we look after."

"This includes washing oiled sea birds, cleaning out animal enclosures and general cleaning for implements and utensils."

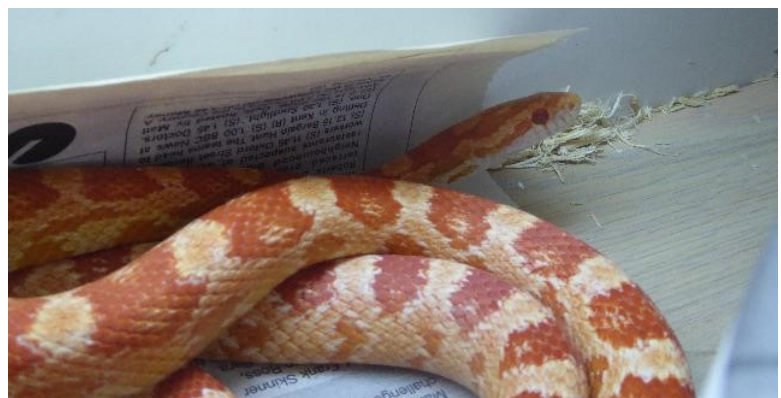
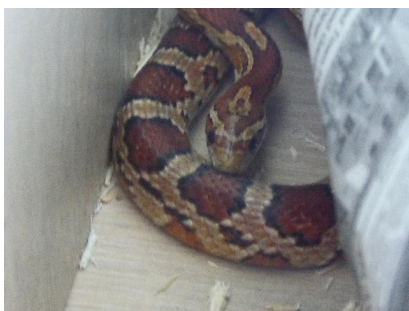
"Staff were having to transport water from other areas, making it quite time consuming."

"As a charity we rely totally on the support of the local community so are extremely grateful to Guernsey Gas for providing and fitting our new boiler."

Steve Marshall, Technical Sales Representative at Guernsey Gas said: "Guernsey Gas is pleased to support GSPCA and installing a new high efficiency boiler will also help with reducing their running / fuel costs."

"This will enable them to spend their funds on the critical activities surrounding the welfare of animals."

To visit the Guernsey Gas website please go to - <http://www.gsygas.com/>



Pollyanna and Natasha two corn snakes in need of a home



The GSPCA are hugely grateful to all of the Work to Benefit team and placements that have helped make a huge difference around the GSPCA and caring for the grounds and animals

Fantastic afternoon at Beau Sejour for the screening and event for the Secret Life of Pets
Thank you to all involved



Swede Dreamz Tribute Band who present an evening of ABBA Ball in aid of the GSPCA on Friday 28th April and Saturday 27th May at the Duke of Richmond Hotel.

There is only one table left on each evening so please book your place fast.

Two course meal, raffle and auction.

Tables of 10 and smaller parties welcome.

Fancy dress 70s style encouraged.

£48 per person Contact Corinne to reserve your place.

Please contact Corinne on 07911-720469 or Email: corinneconnolly@cwgsy.net to reserve your place(s)

Brought to you by Sidneys Sponsored Events.

Corinne and her volunteers each year hold amazing evenings in aid of local charities and from all at the GSPCA thank you.

Please book early as only 1 table left on each evening.

Source Recruitment help out and become Angel Pen Pal Sponsors

On Saturday 18th February a team of staff from Source Recruitment arrived at the GSPCA to help around the Animal Shelter in St Andrews.

The GSPCA are extremely grateful to Source Recruitment as not only did they do a great deal to help at the Shelter but they have also recently joined the GSPCA as a Silver Angel Pen Pal Sponsor and so help support the many animals in our care.

Jacob Jones, Tony Jones, Esther Jones, Sally Jones, Steve Duckworth, Emma Gathercole, Candice Le Tissier and Rick Martin arrived just before 9.30am where they had a quick induction with GSPCA Manager Steve Byrne before they were set to work around site.

The group were then shown a number of areas and quickly got to work. From cleaning out the pools for the seabirds and seals to sorting stores, cleaning aviaries and animal pens to helping sort through donations the team from Source Recruitment were a fantastic help to the GSPCA who have over 350 animals at the Animal Shelter.

Before the group left the team from Source Recruitment had a behind the scenes tour and all got a thank you certificate.

Steve Byrne GSPCA Manager said "The staff from Source Recruitment are truly amazing and we really appreciate their support and help, as not only did they help all around the Animal Shelter on Saturday but they have also recently joined as a Silver Angel Pen Pal Sponsor which is an amazing way for local businesses to help the many animals in our care each year."

"We are so lucky to have wonderful businesses in Guernsey like Source Recruitment that care so much for animals and give up their time to help in the community."

"We always love to hear from businesses that would like to help us help the animals and community of Guernsey and there are many ways of getting involved from CSR programmes to sponsoring animals in our care."

"We can even run bespoke events such as guided tours for your team and their families."

"From all at the GSPCA a huge thank you to all at Source Recruitment."

Sally Jones, Recruiter from Source Recruitment said "It was such a rewarding experience to know that we as a team have worked to help the animals in need here in Guernsey."

"The GSPCA do an amazing job in the caring and welfare all the different varieties of animals."

"It is definitely something we want to do again."

To visit the Source Recruitment website please go to - <https://www.source.gg/>

If your group or business would like to find out about spending a day at the Shelter please go to -

<http://www.gspca.org.gg/about/corporate-and-group-days>

To become an Angel Pen Pal sponsor and for other ways your business can help us here at the GSPCA please go to -

<http://www.gspca.org.gg/about/how-your-business-can-help-gspca-corporate-sponsorship>

If you would like to volunteer then to find out more details here -

<http://www.gspca.org.gg/about/volunteers>



Rossborough are in partnership with the GSPCA to protect Guernsey pets

For each policy inceptioned Rossborough will donate £10.00 to the GSPCA.



Each plan provides:

- Up to £4000 Vet's Fees cover
- Death
- Boarding Fees
- Holiday Cancellation
- Loss/Theft/Straying
- Advertising Reward
- Accidental Damage
- Personal Accident
- Public Liability
- No excess (except on Vet's Fees)
- 10% Introductory discount

10% multi-pet discount



How to apply online: www.rossborough.co.uk and click on the Pet Insurance link

Alternatively you can call our office on 01481 241555

Rossborough Insurance is a trading name of R A Rossborough (Guernsey) Limited. R A Rossborough (Guernsey) Limited is licensed by the Guernsey Financial Services Commission. Registered in Guernsey No. 2873. Registered Office: Rossborough House, Bulwer Avenue.

This product is underwritten by The Equine and Livestock Insurance Company Limited © 2014. Thorpe Underwood Hall, Ouseburn, York. YO26 9SS (registered in England and Wales no: 294940) which is authorised by the Prudential Regulation Authority and regulated by the Financial Conduct Authority and the Prudential Regulation Authority no: 202748.

THANK YOU FOR YOUR CONTINUED SUPPORT



17

S	A	M	I	G	H	J	K	L	O	P	U	S	D	E	W	S	S	A	C
Q	D	F	E	G	E	F	L	O	R	A	L	T	E	H	K	L	O	O	H
K	L	S	A	L	P	E	R	T	Y	W	E	R	R	A	R	E	A	R	E
E	E	T	S	I	A	D	E	H	R	S	A	T	D	F	L	F	E	E	D
D	C	N	E	Y	D	S	W	G	E	B	S	U	S	E	L	P	Q	R	G
V	R	U	N	E	D	A	Z	B	A	B	Y	B	I	R	D	T	U	T	E
E	E	T	N	E	Y	E	X	L	Y	G	D	I	V	R	P	H	P	P	H
A	E	H	M	T	L	R	H	K	T	S	D	R	C	E	O	U	L	A	O
L	A	R	A	B	B	I	T	P	T	P	V	S	D	T	E	L	O	R	G
I	F	L	A	G	D	A	Y	O	I	C	V	G	K	Y	S	I	I	R	R
G	D	K	B	U	L	F	L	P	U	A	D	J	M	P	E	T	U	O	E
U	E	I	C	E	V	A	A	W	A	R	D	S	N	U	F	E	V	T	A
E	F	L	E	I	Y	U	F	Y	U	K	S	K	F	P	D	R	D	F	S
R	S	A	N	G	E	L	P	E	N	P	A	L	S	P	O	N	S	O	R
N	N	E	R	O	R	K	S	E	U	L	R	L	Y	Y	R	Y	S	R	P
S	A	S	S	P	G	E	R	T	T	H	E	D	U	C	K	U	W	T	O
E	K	L	O	G	G	E	R	H	E	A	D	T	U	R	T	L	E	H	T
Y	E	A	A	R	F	N	R	W	R	P	I	O	W	I	T	O	R	P	N
U	U	V	E	S	E	A	F	R	O	N	T	S	U	N	D	A	Y	O	E
L	Y	N	R	E	S	M	Q	X	V	P	U	R	W	O	U	P	E	P	M

SAMI

BABY BIRD

LOGGERHEAD TURTLE

PADDY

GSPCA

RABBIT

ANGEL PEN PAL SPONSOR

FERRET

PUPPY

GUERNSEY

FLORAL

CEVA AWARDS

SEAFRONT SUNDAY

KENNEL

HEDGEHOG

SEAL PUP

PARROT

SNAKE

FLAG DAY

GERT THE DUCK

Thank you to
NASH Copy who
provide the printer
for our Newsletter



GSPCA, Rue des
Truchots, St Andrew,
Guernsey, GY6 8UD
Phone: 01481 257261
www.gspca.org.gg
admin@gspca.org.gg



We are offering advertising for your business or companies in our newsletter. The prices are:

1/4 page spread: £40

1/2 page spread: £80

Other rates are negotiable!

If you are interested, please contact Steve Byrne on: **01481 257261** or stevebyrne@gspca.org.gg