



The  
Guernsey  Press  
and Star  
Supplement 2021

Local  
wildlife  
photography

Pigeon  
Paramyxovirus  
outbreak

Animal  
welfare

Canine  
brucellosis  
warning

Local wildlife photography



## Welcome to the latest GSPCA annual supplement

What a year we have all been through, my 10th year at the GSPCA. In the 148 years the GSPCA has been helping the community and animals this has certainly been the hardest in living memory but we have achieved so much.

We held our 10th Animal Welfare Seafront Sunday and were joined by 1,000s of Islanders celebrating our love of animals. We have helped record breaking numbers of hedgehogs, pigeons and rabbits, met with the States and Guernsey Animal Aid to discuss the animal legislation and of course we had to endure another lockdown. Covid has hit us hard on fund raising and reduced income but with such amazing support, a fantastic team and our new charity shop on Smith Street we are hopeful for the future.

To help with the future we have had a strategy review and you can see our new strategic aims, vision statement and our core values of caring on our webpage. We also welcomed to the committee Louise Gambrell, our new treasurer and Alex Wickens who is an advocate and brings a fantastic skill set.

We recently released two seal pups on Guernsey which was a first for us as we have always released on Jethou or from a boat. For the seals and the 2000+ wild animals we help each year we relaunch our Wildlife Hospital Appeal and we are also looking to transform an area onsite as a purpose-built small animal building so watch this space over the coming weeks.

We receive so much support from so many and we are so grateful, but I have to share a special thanks with our team as without those that do so much to ensure we operate 24/7, have the funds to carry out our work and care for the animals then we couldn't do so much. Please remember there are so many ways to support us, from monthly giving to thinking about us in your will.

Over my decade, as I reflect, we are truly blessed with so many incredible staff, volunteers, committee members and of course you our supporters and with the 150th anniversary on the horizon in 2023 we look to the future with plans and excitement.

I hope you enjoy this supplement which Lorna (our welfare manager) and the Guernsey Press has kindly put together, with thanks to those who have contributed, advertised and supported our work.

Stay well!

**Steve Byrne**  
MANAGER

All material supplied by the GSPCA

### GET IN TOUCH WITH US:

Les Fiers Moutons,  
St Andrew's,  
Guernsey, GY6 8UD

Tel: 01481 257261  
(9am to 5pm)

Emergencies tel:  
07781 104082

Opening times: Mon-Sat  
11am-5pm. Sunday and  
bank holidays 11am - 4pm.

### Email:

admin@gspca.org.gg,  
lornaprince@gspca.org.gg,  
stevejbyrne@gspca.org.gg

Web: [www.gspca.org.gg](http://www.gspca.org.gg)

Twitter: @GSPCA

Facebook: GSPCA

**Vaudin**  
Stonemasons



Tel: 248316 Fax: 240580

e-mail: [vaudinstone@cwgsy.net](mailto:vaudinstone@cwgsy.net) web: [vaudinstone.com](http://vaudinstone.com)

Keep up the good work



## Canine Brucellosis

At an Association of Dogs and Cats home meeting recently a very interesting presentation was made by Daniella Dos Santos, BVA Senior Vice President, regarding a disease known as B. canis and its impact on the dog population and people working with dogs. As we see an increase in the number of imported dogs into the Island this is a very relevant topic

### CANINE BRUCELLOSIS WHAT IS IT?

B. canis is a highly contagious bacteria that is spread readily between dogs via genital secretions, saliva and urine. Transmitted via licking, sniffing, sexual transmission or from mother to pup.

### CLINICAL SIGNS IN DOGS:

- Reproductive issues
- Abortion Infertility
- Lethargy
- Enlarged Lymph Nodes
- Lameness
- Back Pain
- No clinical signs
- Can still be infectious
- High risk of suffering clinical disease later in life

### WHY ARE WE WORRIED?

- B.canis not endemic to UK.
- Prior to 2020 only 2 confirmed canine cases. Both imported dogs.
- July 2020 – February 2021 >40 cases in dogs.
- Most diagnosed in rescue dogs adopted by UK owners from organisations specialising in rehoming from overseas.
- Mostly young dogs from Romania.
- Large household cluster in England with dog-dog transmission. Worryingly, source of this infection cluster still under investigation.
- Zoonotic Disease – it can be transmitted to humans.

### PEOPLE AT RISK

Owners, veterinary staff, laboratory staff.

### Symptoms non-specific:

- Continued, intermittent, or regular fever
- Loss of appetite
- Weight loss
- Headaches
- Fatigue
- Back and/or joint pain

The incubation period may be weeks to years

### TESTING

No test is 100% accurate, need to take into account history and clinical sign.

Blood samples do not always contain B. Canis so a negative test cannot be relied upon.

**Bacterial Culture:** Positive result definitive evidence of infection

PCR test for B. canis DNA

**Serological test to detect antibodies:**

Antibodies produced within 2 weeks of infection but can take 3 months.

**Positive result:** current or previous infection

**Negative results:** not all dogs produce detectable antibodies.

### TREATMENT

Difficult to cure, impossible to eliminate risk of disease transmission

No way to determine if treatment has been successful. Euthanasia is the only way to eliminate the risk of the disease being spread.

**Treatment not recommended:**

Several weeks of antibiotics

Often unsuccessful in eliminating infection, and no way of determining if treatment has been successful.

### IMPORTATION OF DOGS

At the very least test prior to import.

If the dog has only recently been imported or bred with an imported dog then testing on more than one occasion may be necessary to determine if it is infected.

Negative tests are not 100% reliable.

Risk to dog population already demonstrated.

Risk to human health.

Should we be reconsidering importation, instead focusing on in Country interventions?

*References: Risk review and statement on the risk Brucella canis presents to the UK human population (publishing.service.gov.uk) Canine Brucellosis: Summary Information Sheet (defra.gov.uk)*

### INVESTEC NEW AMBULANCE



Steve Byrne, GSPCA manager, said: "We are hugely grateful to all the team at Investec who are doing so much to help and support our work at the GSPCA."

"They are truly amazing and we cannot thank them enough for all they do and have done, especially since 2019 and despite the lockdowns, from funding life saving equipment like the AED to most recently helping fund a new electric Animal Ambulance and giving hundreds of hours, they really help make a difference with us being able to achieve our work 24/7."

"The Investec team are so friendly and work so hard and from all the GSPCA team and animals we want to say a MASSIVE thanks, we really truly appreciate your support."

"The new GSPCA Animal Ambulance, which is an electric Nissan NV200, helps ensure we can rescue animals 365 days a year and also with it being electric helps reduce our carbon footprint, which is extremely important to us at the GSPCA."

"We must all do what we can to care for our environment and again thank you to Investec for helping us achieve this."



## SARRE'S HOME BOARDING AND TRAINING



### SERVICES OFFERED:-

- Dog Home Boarding and Day Care
- One to one behaviour training
- One to one puppy 8 session course (Kennel Club affiliated)
- English springer spaniel and sprocker breeder

### Enquiries

Training:- 07781 115029 - Sara

Boarding and Day Care:- 07781 440134 - Caroline

Sarres@suremail.gg • [www.sarrestopdog.com](http://www.sarrestopdog.com)

<https://www.facebook.com/Sarresdogtraining/>

## Rescued, rehabilitated and released birds

### TOLLY

On the evening of the 9th of October, the GSPCA Ambulance Warden was called out to rescue an oiled Razorbill found at L'Eree.

The stormy winter weather often stirs up oil from the seabed causing wildlife harm and Olly McTolly, as the bird was called, was rushed to the GSPCA where GSPCA Manager Steve Byrne checked the poorly bird in and provided the initial first aid.

After weeks of intensive care and washes by with GSPCA team members Yvonne Chauvel and Beckie Bailey to clear his feathers of any oil he was moved on to our rehabilitation pool until he was finally cleared as fit to be released.

After everyone's hard work it we were all so happy to see him back in the wild.

### VIOLET AND GARY

Violet-Elizabeth, a guillemot, was rescued at Pembroke on the 7th February and Gary the razorbill was rescued from L'Eree on the 18th February.

Beckie Bailey GSPCA Animal Care Assistant said "Gary was brought up to the shelter by a member of the public, as he was covered in oil and had fishing material wrapped around him."

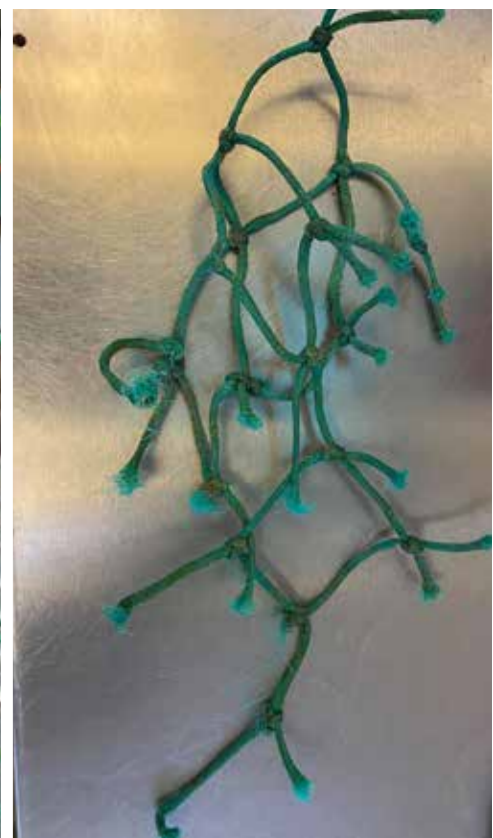
He was admitted into the Wildlife Hospital and as the staff suspected further injuries, he was taken to Route Isabelle Vets where he had an x ray. Once the Vets had confirmed that Gary hadn't suffered any breaks, he started his rehabilitation treatment. Violet-Elizabeth, the guillemot, was also regularly washed and treated for her oil ingestion and when they were both well enough, they were placed in one of our pools together.

Once they were fit enough and feeding well, they were released back to the wild.

It takes such a long time to clean oil off seabirds, ensure there is no lasting damage and wait for their natural waterproofing oils to return but it is definitely worth it.

During the stormy winter months, we often see oiled birds and for those around the coast please do keep an eye out for poorly birds.

Donate by calling 01481 257261, by post to GSPCA, Rue des Truchots, St Andrews, Guernsey GY6 8UD or online [www.giving.gg/donate/event/5876/](http://www.giving.gg/donate/event/5876/) GSPCA-Coronavirus-Emergency-Appeal




KNOW  
THE PAST  
PROTECT  
THE FUTURE

We are an independent global specialist of private wealth, corporate and fund services to high net worth families, institutional clients and fund managers.

Guernsey • Isle of Man • Jersey  
Luxembourg • Malta • Mauritius

**OAK**

[www.oak.group](http://www.oak.group)

Regulatory information can be found at [www.oak.group/regulatory](http://www.oak.group/regulatory)



NEW GSPCA CHARITY SHOP OPENS IN SMITH STREET

Many will be aware that during covid we had to close the onsite charity shop at the GSPCA for a number of reasons which included it being transformed into a small animal unit. We are very excited to report that tomorrow morning after a lot of hard work from the team we are opening a brand new GSPCA Charity Shop on Smith Street in St Peter Port. The shop will be headed up by Michelle Champion and her great team of volunteers. The shop is located next to Fillers and some may remember it as the Christian Aid or Oxfam shop. Since it closed recently it has had a make over and it also will open with card facilities. Steve Byrne GSPCA Manager said “We are very excited to announce that we are opening a new GSPCA Charity Shop.”

“The shop is in Smith Street next to Fillers and the GSPCA team with many volunteers have been working hard redecorating and getting ready for the BIG day.” “We sadly closed our on site charity shop before the first lock down to reduce foot fall on site and we have been working on turning it into a small animal unit so it is great news that we are opening a new shop.” “The new shop will be open 8am to 5.30pm so longer hours than the previous shop and we also accept card.” “Please do pop in and support our new Charity Shop in Smith Street and thanks again to Michelle, Tim and all that have worked so hard including Lee from Professional Decorators and to the Work to Benefit team and especially the Investec Volunteers and to Investec who helped pay for much of the items used to decorate the inside.”

Isabelle Vets

India and Joey are successfully released



Over the last 10 years we have released 12 seal pups on Jethou and 2 on Les Ecréhous and today it was the turn of India and Joey. The weather was amazing and location fabulous and India was the first to swim off although keeping an eye on us for sometime. Joey however wasn't as brave and kept in the shallows for some time before venturing into deeper water. Geoff George Head of Marine Mammals, who worked tirelessly caring for the seals said “At 62kg Joey and 58kg India they were ready for the wild.” “Joey has been one of the most aggressive pups we have had but he took his time before swimming off.” “Each release is different, and this is a first for Guernsey as we normally go to Jethou.” “We released them at the slip way near the Fairy Ring and it went really well.” We do ask people to not go looking for them and to ensure you don't approach them as they settle back into the wild. There is a good chance they will stay close to the coast to start but as they get braver they will move further afield. We will still have Titan the Guernsey seal pup and Porkpie the Cornish seal pup who have a little way to go until they are ready and still need your support and you can donate by going to [www.giving.gg/donate/charity/2/Guernsey-Society-for-the-Prevention-of-Cruelty-to-Animals-\(GSPCA\)](http://www.giving.gg/donate/charity/2/Guernsey-Society-for-the-Prevention-of-Cruelty-to-Animals-(GSPCA)) . To see some of the previous stories about seals please visit [www.gspca.org.gg/blog/tag/seals](http://www.gspca.org.gg/blog/tag/seals).

HERE IS A LIST OF THE SEALS WE HAVE HELPED BACK TO THE WILD

	Jethou Bumblee - Found in Jethou, arrived Nov 2012.
	Hanois - Found in Guernsey, arrived Jan 2013.
	Trinity - Found in Guernsey, arrived Jan 2014.
	Eden - Found in Guernsey, arrived Jan 2014.
	Bonnie - Found in Guernsey, arrived Jan 2016.
	Sami - Found in Jersey, arrived Dec 2016.
	Temperance - Found in Guernsey, arrived Nov 2017.
	Andrew - Found in Jersey, arrived Nov 2018.
	Marty - Found in Jersey, arrived Dec 2018.
	Gully - Found in Guernsey, arrived Dec 2018.
	Sealia - Found in Guernsey, arrived Jan 2019.
	Mambo - Found in Guernsey, arrived Feb 2019.
	Hannah - Found in Guernsey, arrived Feb 2019.
	Pebbles - Found in Guernsey, arrived Feb 2020.
	Joey - Found in Jersey, arrived Nov 2020.
	Titan - Found in Guernsey, arrived Dec 2020.
	India - Found in Guernsey, arrived Jan 2021.
	Pork Pie - Found in Guernsey, arrived May 2021.

SOME GREY SEAL FACTS

✓ Population numbers since 1960s have doubled.	inter tidal zones, brackish water, polar and shallow seas.	
✓ A grey seal pup weighs 14kg at birth.	✓ There are 18 known species of seal in the world.	
✓ A grey seal pup mothers milk contains 60% fat.	✓ Many sick seal pups need tube feeding every 2-3 hours day and night on arrival.	
✓ Grey seals can dive to a depth of 70m.	✓ The seal pups in our care once eating will consume 20-30 herring or mackerel each day.	
✓ Another name for a grey seal is the horsehead seal.	✓ We aim for a release weight in excess of 40 kg, with good weather and a remote location.	
✓ Grey seals are found in the waters surrounding Europe, Russia, North America, and Channel Islands.		
✓ Grey seals can be found in estuaries,		

Animal Welfare

One of the GSPCA's main aims is to prevent cruelty to animals and help those at risk of cruelty and neglect. The animal welfare (guernsey) ordinance, 2012 aims to protect animals from cruelty and neglect. Section 8 of this ordinance outlines the legal requirements by owners and keepers to meet the basic duty of care requirements for any animal that they keep. This is based on the five freedoms which are:

- ✓ Freedom from hunger and thirst by ready access to fresh water and a diet to maintain full health and vigour.
- ✓ Freedom from discomfort by providing an appropriate environment including shelter and a comfortable resting area.
- ✓ Freedom from pain, injury or disease by prevention or rapid diagnosis and treatment.
- ✓ Freedom to express normal behaviour by providing sufficient space, proper facilities and company of the animal's own kind.
- ✓ Freedom from fear and distress by ensuring conditions and treatment which avoid mental suffering.

Every day we receive calls from members of the public who are concerned for the welfare of an animal. These calls are our priority and as such welfare staff will drop everything to respond to such a call. More often than not we are able to resolve any problems that we find and can put the caller's mind at rest but there are occasions when further action is required. We rely on the general public to provide us with important information regarding animal welfare within the community, especially in situations where an animal may be at risk, and as such we must act professionally and with discretion. Any call to the shelter involving a concern about an animal is dealt with in the strictest of confidence and at no time are the details of a complaint or complainant discussed with third parties. What happens when we receive a complaint? The details of the concern are logged as an animal welfare concern. The more information we receive the better and while some people would rather not tell us who they are contact details of the caller are extremely important. If we are unable to locate an animal in distress they

will be the only lead we have and it can mean the difference between us being able to help an animal and having to abandon what may be a very serious investigation. A member of staff will locate the animals to assess the situation and gather all relevant information. We always carry an identification card and will show you who we are. Our aim is to collect evidence and investigate the circumstances and condition of any animal before making a judgment about a person or situation. We know from experience that some animals that look neglected and 'starved' are often just old and infirm and receiving treatment from a vet. If a member of our team has been to your property and you are not home they will always leave a card to inform you of our visit and who to contact. If you do not find a card then it was not a member of the GSPCA's welfare team that visited your property. Education or prosecution? We need to determine whether an offence has been committed or whether it is a case of someone simply needing our help and support. In the majority of cases education is key and more often than not some help and advice can greatly improve the ability of the owner to care for their pet and therefore improve the quality of life of the animal. If this is the case we will always complete follow up visits to ensure that our advice has been taken on board and to reassess the animal(s). If we find that there has been no improvement in the animal's circumstances and quality of life, we will move to take further action. If we believe that an offence has been committed, we will collect as much evidence as possible which is vital to determine the outcome of a court case. We will then contact the police and states' veterinary officers. Evidence is vitally important if we are going to try to trigger a court case as this will be used by both the prosecution and defence to ascertain a verdict. Please note:

- We will always show identification
- We will always leave a calling card to inform you of our visit and who to contact.
- We do not behave in a threatening manner when investigating cases of cruelty.
- We do not make visits at unsociable hours unless we have been asked to attend by the police or another agency.

If you are concerned about the welfare of an animal please contact the shelter on 257261 If you need advice or feel you can longer care for your own animal, please contact us. The GSPCA will always offer shelter to your animal without prejudice.



Under-weight Bearded dragon, dirty water unsuitable for drinking, overgrown teeth in a rabbit, matted cat, rabbit habitat with excrement and no hay and poor turkey housing,

Another Level

We offer top quality standards of workmanship for your home and garden

FREE QUOTATIONS  
♦♦♦  
COMPETITIVE PRICES

Contact: Ricardo  
07781 452323

another-level@hotmail.com

Proudly sponsor the GSPCA

- Paving
- Fencing
- Soft & Hard Landscaping
- West Trades
- Stonework
- Garden Maintenance



## HAPPY TAILS



Alfie



Austin



Boomer



Bruce



Charlie



Dino



Doug



Dylan



Enzo



Eric



Happy fish



Kellog



Lacey



Nancy



Pipo



Pongo



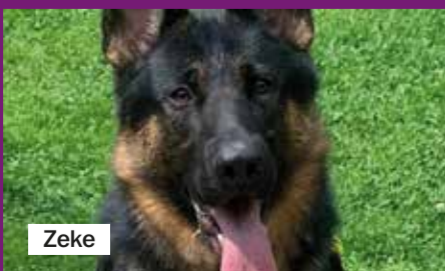
Ronald



Ruby



Tiger Kin and Luma



Zeke

## OUR NEWEST COMMITTEE MEMBERS

Since February 1873 the GSPCA has been run by a team of dedicated Committee Members who give up their time to lead the organisation. We are incredibly lucky to have an amazing and skilled Board and recently the GSPCA having recently reviewed our strategy and future vision which can be seen on our about page - [www.gspca.org.gg/about](http://www.gspca.org.gg/about). Two of the roles identified that we needed to recruit expertise onto the GSPCA Committee was that of a Treasurer with the necessary skills as sadly the previous Treasurer Phil Soulsby was having to stand down due to other commitments and we also identified the need for a Committee Member with legal expertise and contacts. Working with the Guernsey Community Foundation and their Volunteer Matching Programme a number of individuals contacted us and after meeting with those interested we are delighted to report that recruited onto the Board are Alex Wickens and into the role of Treasurer Louise Gambrell.



**Alex Wickens - GSPCA Committee Member (Co-opted March 2021)** - Alex has lived in Guernsey for a little over 15 years and was looking for a meaningful way to give back to the community. The GSPCA was a perfect fit for him as he loves animals and wholly supports the aims and objectives of the society and the essential services it provides for the Island. Alex also feels it will be a great opportunity to demonstrate to his children (Johnny & Phoebe) the importance of animal welfare and of charitable service. In his daily life Alex is a senior associate in the corporate, finance & funds team at Collas Crill. Having qualified as a solicitor of England and Wales in 2012 he specialises in banking and finance law. We are confident that his legal experience will be a useful addition to the committee. Alex is a keen runner and especially enjoys running with his dog Monty on the cliff paths. His latest hobby is the guitar, and although he professes that he is not very good at it, he is definitely enjoying the learning process.

**Louise Gambrell (FCCA) - GSPCA Committee Member (Co-opted April 2021)** - Louise was born in Guernsey and educated at Castel Primary School and Ladies College senior school. Louise qualified as an accountant with KPMG in 1993 and then worked for 20 years initially as financial controller and latterly as strategy and planning manager for the HSBC Private Banking group. More recently Louise has worked part-time in contract roles and wanted to use her extra time giving back to the community.



Having always loved animals, Louise was keen to support an animal charity after spending a few months on the children's ward of Southampton hospital and seeing first-hand how therapeutic the therapy dogs were for the children there. She felt that the Treasurer role would work well combining her accountancy skills with her passion for animal welfare and would make her a better role model for her children. Louise is kept busy by walking her yellow Labrador (Alfie) a couple of times a day with her husband (Chris), running along the West coast and looking after her two daughters (Gabriella and Lucy). Alex Wickens GSPCA Committee Member said "I had been thinking about getting involved with a charity for a couple of years, but I wasn't too sure how to go about it and which one."

"When the Guernsey Community Foundation email was circulated around the firm stating that the GSPCA needed a new committee member with legal experience, I immediately thought that was the perfect fit for me."

"I'm a pet owner and an animal lover, but most importantly I wholly support the aims and objectives of the society and the essential services it provides for the Island."

"My fellow committee members have been very welcoming and I hope my legal background can be a useful asset for the society going forward."

Steve Byrne GSPCA Manager said "The GSPCA was founded and run by a Committee since 1873 and we have seen so many incredible people on the Board over the years."

"We are hugely grateful to the Guernsey Community Foundation who run and promote their Volunteer Matching Programme which you can see by going to <https://foundation.gg/get-involved>."

"Through this we had some amazing interest from extremely skilled keen members of the community wanting to use their expertise to help us here at the GSPCA and we are delighted to welcome Alex Wickens and Louise Gambrell."

"Both have already made a huge impact and we are extremely grateful for their time and skills they bring."

"Committee Members help steer the GSPCA inline with our Aims and Objectives and we recently reviewed and updated our Strategy, Vision Statement and Core Values which we are passionate about and really make a difference helping animals and caring for our community in so many ways."

To see more about the GSPCA Committee please visit: [www.gspca.org.gg/about/gspca-committee](http://www.gspca.org.gg/about/gspca-committee)

**officemaker**

P.O. Box 551, Unit 1, Church Road  
Industrial Estate, Church Road,  
St Sampson's, GY1 6HU  
Tel: 01481 242575  
Email: [sales@officemaker.gg](mailto:sales@officemaker.gg)

are pleased to support  
the good work  
of the  
GSPCA



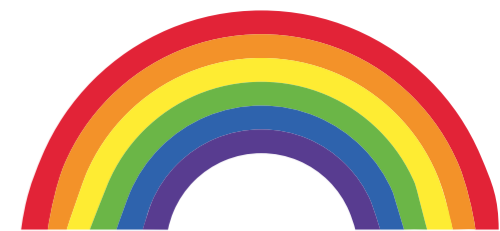
**Zoes**  
Dog Grooming Salon

Rue Des Pointes, St Andrews  
Tel: 232833  
Established 2007

We are proud to support the GSPCA



Contact Zoe -  
Tel: 01481 232833



## ANIMAL HEROES

### THE FACES BEHIND THE GSPCA

Our amazing team of staff and volunteers have worked tirelessly over the last 18 months, maintaining the GSPCA's essential services during the Covid 19 pandemic.

Helping animals in need (and their owners), rescuing wildlife, investigating cruelty cases and just being there has been difficult when there's no doubt they sometimes just wanted to stay at home, stay safe and protect their families.

It has been a very stressful and frightening time for everyone, especially those in public facing roles, and the Shelter staff and volunteers are no different. We appreciate that the pandemic has had a profound effect on the mental wellbeing of Islanders but please remember that our team are not immune to the increased anxiety and worry that Covid 19 has created. Our staff work in an already emotive and sometimes upsetting sector, and verbal abuse from callers is simply unacceptable and unfair. When speaking to a member of our team, please remember to be kind and consider your words. Calling our out of hours volunteers, reception staff, ambulance drivers and welfare staff repeatedly, or shouting and swearing at them is unnecessary and unkind. They will try their very best to help you in whatever way they can, but they are only human, and your words cannot change the situation and can in fact cause a lot of upset.

If you need our assistance we are here, 24 hours a day, 7 days a week, 365 days a year, but please be patient and understanding as the person on the other end of the phone may not be able to provide an immediate solution for you but they will always do their best to help. Thank you!

To donate to the Coronavirus crisis appeal visit [www.giving.gg/donate/event/5876/GSPCA-Coronavirus-Emergency-Appeal](http://www.giving.gg/donate/event/5876/GSPCA-Coronavirus-Emergency-Appeal)

Just like them we're there for you  
when you're ill *and* to **protect your home!**



### FORESTERS HEALTHCARE

Unless you and your family are members of a healthcare scheme, a serious illness can bring real financial hardship. Medical insurance is a 'must' for individuals and families alike. At Foresters Healthcare we operate **family and group membership schemes**.

Call us to talk through your options and plan the best cover for you and your family based on your lifestyle and budget.

Call us on **01481 728864**  
or email [info@forestershealthcare.co.uk](mailto:info@forestershealthcare.co.uk)



### LA FRATERNELLE

La Fraternelle are delighted to have served the islands of the Bailiwick for nearly 200 years.

Whether you live in a large family home or a small apartment, whether you own or rent, we'll find the best level of cover for the best possible price that suits your individual needs.

Our Home Insurance can include many policy discounts.

Call us on **01481 728864**  
or email [info@orion-insurance.co.uk](mailto:info@orion-insurance.co.uk)





**KITCHENS & BEDROOMS**  
BY PETER CAMPBELL

**Are pleased to support the aims of the**

**GSPCA**  
GUERNSEY SOCIETY FOR THE PREVENTION OF CRUELTY TO ANIMALS

**RESCUE DOG TELMA**



**And design, supply and install quality fitted kitchens and bedrooms**

VIEWING BY APPOINTMENT

**Telephone**  
**07781 146969**  
**pjc@cwgsy.net**



*Le Friquet*

**PROUD TO SUPPORT THE**

**GSPCA**  
GUERNSEY SOCIETY FOR THE PREVENTION OF CRUELTY TO ANIMALS

**HOW WE SUPPORT THE GSPCA**

- Monthly food donations
- Plant donations towards the Pet Memorial Garden
- Family Fun Day fundraising

**CLUB MEMBERS:**

- 10% OFF WET, DRY & FROZEN CAT & DOG FOOD
- EXCLUSIVE MONTHLY OFFERS

*Le Friquet*  
Home of Garden and Living

Le Friquet, Rue du Friquet, Castel  
[www.bluediamond.gg](http://www.bluediamond.gg)




## ♥ LOCKDOWN LOVE FOR LOCAL WILDLIFE ♥

Rachel Ann has been an avid supporter of the GSPCA for many years and her stunning photographs reaffirm how important our work rescuing, rehabilitating and releasing wildlife really is. Before the pandemic 'hit' we were looking to develop a new wildlife hospital so we could improve our care of these beautiful creatures.

Rachel describes how the Island wide lockdown led to a (healthy) obsession with wildlife photography.

*"It was summer 2020, Guernsey had just come out of its first lockdown and the Island's borders were shut. Before Covid, every few months I would travel away to either go hiking or to watch live music, this was the first time I knew that I would be stuck on my Island indefinitely. I needed a plan.*

*I had bought a basic camera the previous year with the intention of learning how to use it, but all I had managed to do was go out and take some photos on the automatic setting. They had come out ok but it really just started gathering dust and I had reverted to using my iPhone for most of the time. I was in a local café with a friend who told me he had done a college course in photography. During that conversation he explained to me what all those weird little settings meant on my camera. I then went home, ordered a secondhand book on how to use a DSLR camera and watched a few YouTube videos. A lot of it went over my head but I decided to dig out my camera, dust it off and learn how to use it properly.*

*As it was summer, there were lots of beautiful butterflies and moths about, so I would often pack my camera in my rucksack and head for the cliffs for the day. During lockdown the locally run Pollinator Project had sent all the homes a leaflet showing all the Guernsey butterflies, I had decided to try and photograph as many as possible. Summer flew by.*

*Autumn 2020 arrived, our borders were still firmly closed and most of the butterflies had gone. It was going to be a very long winter; I needed another plan. I bit the bullet and bought myself a 150-600mm lens for bird photography, it cost £750 but seeing as I had not been away for a year, I felt I could justify the cost. My knowledge of birds let alone bird photography was limited. I knew that we had gulls, sparrows, robins, those lovely hovering kestrels and maybe a few others, but that was about it. I also knew we had a bird hide by the Vale Pond so I thought that would be a good place to start. Every day for a few weeks I'd nip in and take lots of photos for practice, I'd also take my camera to various beaches and try and photograph the birds on the beach or in the trees. It was so difficult they kept moving! But I persevered and when I would get a photo, I was happy with I'd share it on my Facebook page for my friends to see. Every time I managed to get a shot of a new bird, I didn't know what it was I'd come home and look it up. Well as time went on it became evident that Guernsey has a huge diversity of birds that either lived or migrated here. We even have some that just stay for a few days, and you have to be quick to spot them, like a Hoopoe, Black Winged Stilts and Ruddy Shelducks to name a few.*

*Spring 2021 arrived and birds like the chiffchaff, reed warblers, cuckoos all start arriving. Chicks are born and the parents work tirelessly to build nests, hunt and feed them. The ponds are busy with coots, egrats, and herons. The skies have marsh harriers, peregrines, buzzards and kestrels. The gardens have finches, dunnocks and robins. The seas have puffins, cormorants and oyster catchers. The trees have woodpeckers, tits and wrens. All this plus hundreds more. It's an incredible world around us.*

*So, it's August now, all the babies have fledged, many birds have gone to warmer climes, the butterflies are slowly decreasing and those chilly nights are creeping in. But the kingfishers have arrived, the dragonflies are still here and the winter migrants will be heading to visit us soon. So, I'm happy, my plan worked and by closing our borders it opened my eyes to how much diverse and beautiful wildlife Guernsey has. I'm also living proof that anyone can take up wildlife photography, just for the record, I still don't really understand what all the settings on my camera mean but I've had immense fun trying."*

If you would like to read more about our future 'wildlife hospital' plans, please visit: [www.gspca.org.gg/blog/gspca-dlm-architects-launch-design-and-build-campaign-new-gspca-wildlife-hospital](http://www.gspca.org.gg/blog/gspca-dlm-architects-launch-design-and-build-campaign-new-gspca-wildlife-hospital)



**VALPYS**

Hotpoint Miele

**Miele Cat and Dog Vacuum Cleaners**

**perfect for pet owners**

**ELECTRICAL & HARDWARE STORE**

Grande Rue, St Martin's  
**Tel: 238422**  
Like us on   
[www.valpysguernsey.co.uk](http://www.valpysguernsey.co.uk)



**For all walks of life!**

Make the right choice when choosing your flooring and window coverings


- We have the largest selection of domestic and commercial flooring
- The widest array of window blinds, shutters and curtains
- We have the largest flooring showroom in Channel Islands
- We're the most established flooring company with 60 years under our belt.


**Call for a free quotation!**

**DWA**  
D.W. ARUNDELL  
Established 1960

FLOORING, WINDOW BLINDS, SHUTTERS & CURTAINS

Tel: 246844 | [www.dwafl flooring.com](http://www.dwafl flooring.com)  
Visit our showrooms. North Side, Vale.

 [www.facebook.com/DWArunnell](http://www.facebook.com/DWArunnell)



## Looking for purr-fect homes

Adopt, don't shop. We have so many animals looking for loving new homes. You may need to complete an application form, pass a home check and you should be aware that in order to help us cover our costs there is an adoption fee for our animals. For more information please visit [www.gspca.org.gg](http://www.gspca.org.gg), call 257261 or email [admin@gspca.org.gg](mailto:admin@gspca.org.gg)



Butterscotch



Flopsy



Hazel and Lav



Humphrey



Jemima



Mushy



Ophelia



Ru Paul



Sunny Dee



Toby



Kitty



Kyle

## PLEASE DO NOT FEED THE HORSES!

Although it may seem harmless, your kindness may kill them



Guernsey's horse owners are asking the public not to feed their animals after an increase in carrots and apples being left in fields, or fed directly to horses and ponies. Local horse woman and former riding instructor, Alex Tielles, said: "I have had several people contact me with real concerns about the amount of people feeding their animals. I know they are lovely to look at and to come and see, but please, please do not feed any horses you may come across."

"Horses do like their food and in their impatience to get it, sometimes they can give you a nasty nip or flatten their companion if they think he's getting something and they're missing out. Lumps of food such as carrots or apples can easily become lodged in horses' throats, and as horses can't be sick this can kill them. "Horses, like people, can also have allergies to certain foods and what may seem like a treat can make them extremely unwell. If they eat anything they shouldn't it can stop their stomachs working and cause a condition called colic, which can even kill them."

Although the animals' owners do not mind people visiting their animals any passers-by are urged not to leave any gifts for them - as even grass cuttings can be dangerous, as they can easily choke on them. "The cuttings can also either block the horse's gut and cause them to get a severe tummy ache, or they can ferment in their stomachs which causes the horse's intestines to fill with gas. This is a potentially fatal condition."

"We all know people mean well and simply want to make a fuss of our animals, but it is worth remembering that you would be very upset if someone came to your house to feed big bags of sweets to your children or chocolate to your dogs. Feeding horses is no different - our pets are very much loved and most owners know what is good for them. "If you do genuinely have concerns that a horse is not being fed enough, I'm sure the best thing to do would be to speak to the owner in the first instance, as they are likely to explain to you why a horse is on a restricted diet. As a general rule if a horse is left without water or is very thin then there may be an issue, but if they have water and appropriate shelter and are not skinny then they should be fine. If you are still concerned then contact the GSPCA or the States Vet, but thankfully cases of neglect are extremely rare in Guernsey"

If owners are unaware that their horses and ponies are being given more feed than usual, it can cause them to become very ill - it can even be fatal. You may see horses and ponies in patches without much grass (especially in the Spring) but this is for their own good. Some of them will eat until they are very unwell so it is important that we manage their food intake." Mrs Tielles said it is also worth being aware that feeding horses can cause them to fight each other, bite you or even cause potentially deadly illnesses.

#StopFeedingOurHorses  
Your kindness could kill



Country Pet Hotel  
Where Pets go on Holiday!



WE WELCOME DOGS, CATS AND SMALL ANIMALS

- Facilities Built In 2011
- Webcam & TV facilities
- Outdoor Exercise Area
- On-site Grooming Salon
- 5-Star Luxury Heated Accommodation
- Doggie Day Care
- Individual Diet Plans

Opening Hours  
Monday to Friday – 10am to 4pm  
Saturday – 10am to 1pm  
Sunday – Closed to the public  
All Bank Holidays – Closed to the public

ONLINE BOOKING  
[www.fourpawspethotel.co.uk](http://www.fourpawspethotel.co.uk)



01481 264206

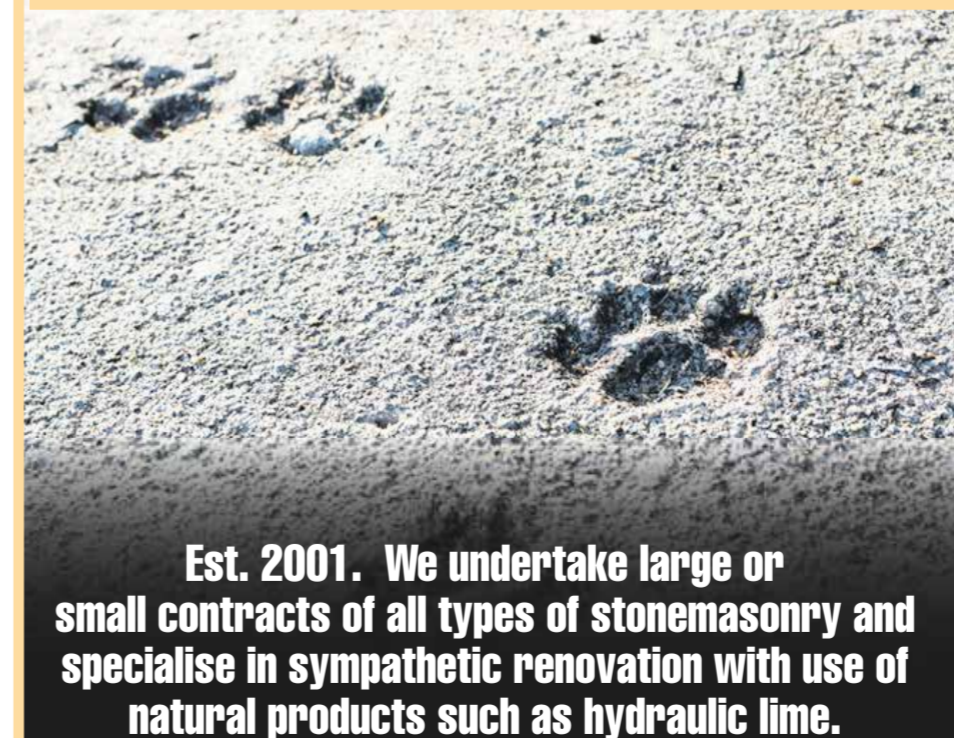
Rue des Longscamps, St Saviours, GY7 9YN  
Perrys Guide Map – Page 22 C5

Members of pet Industry Federation / UK Kennel & Cattery Association



**Stoneworks Ltd**  
Stonemasons and general building Contractors

Mobile: 07781 124221  
Email: [stoneworksgsy@gmail.com](mailto:stoneworksgsy@gmail.com)  
[www.stoneworksgsy.net](http://www.stoneworksgsy.net)



Est. 2001. We undertake large or small contracts of all types of stonemasonry and specialise in sympathetic renovation with use of natural products such as hydraulic lime.

**ASPECTS**  
**HEATING & PLUMBING SPECIALISTS**

Proud to support the GSPCA

- Renewable Energy Installations (Solar Panels, Air Source Pumps, Ground Source Pumps)
- Boiler Replacements & System Upgrades
- Bathroom Replacements
- Underfloor Heating Specialists

t: Jed 07781 133 433  
e: [info@allaspects.gg](mailto:info@allaspects.gg)

bpec OPTED Kingspan

**da nello**  
RISTORANTE ITALIANO

Proud to support the work of the GSPCA  
'Italian food at its best'

'We Italians love our pets.... we also love.... people.... football.... good food.... good wine and fast cars'

46 Lower Pollet St Peter Port, Guernsey  
Telephone 721552. Fax: 724235

Open from Tuesday to Sunday  
Closed on Monday

**justgames**  
STILL THE ISLAND'S ONLY INDEPENDENT GAMES SPECIALIST

Support Pet Adoption

facebook.com/justgamesgsy  
facebook.com/kidsrazesguernsey

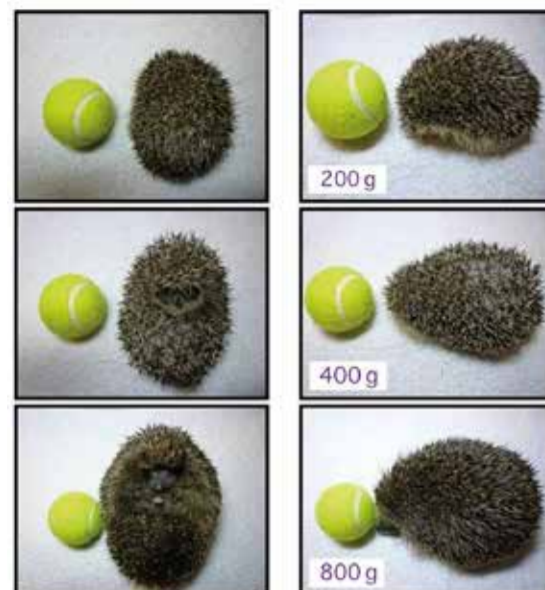
**Canine Behaviour Guernsey**

Professional Dog Training and Behaviour Modification - *The Kind Way*

Call - 07781 426337  
Email - [caninebehaviourguernsey@gmail.com](mailto:caninebehaviourguernsey@gmail.com)  
Facebook message - [www.facebook.com/CanineBehaviourGuernsey](https://www.facebook.com/CanineBehaviourGuernsey)  
[caninebehaviourguernsey.co.uk](http://caninebehaviourguernsey.co.uk)

Paws for Support

## Autumn Juveniles



Every year hundreds of juvenile hedgehogs come into The GSPCA!!

Don't leave me!!!  
If in doubt - Seek advice

Please if in doubt phone The GSPCA for help 01481 257261.

Autumn - Under 200g hedgehogs need to go to The GSPCA.

October - Over 450g; if looking healthy & a regular visitor in your garden leave in the wild but help with supplying the correct food and water, feeding up for the winter months ahead.

600g; Leave alone! Hedgehogs are wild animals and need to stay in the wild!

At any weight; If out during the day, circling, injured, looking ill, wobbling, looks thin then seek GSPCA help.

\* In November we recommend 600g as a minimum weight.



## GSPCA dog training volunteers are ABSOLUTELY PAWSOME!

We have been running our amazing dog training classes at the Shelter for over two decades during which time we have been VERY 'fur'tunate (sorry) to have some wonderful volunteers dedicating their time and expertise to help us promote responsible dog ownership, welfare in dog training and, of course, help owners navigate their way through what can seem a minefield of owning and training a new pooch



To ensure teaching of the highest standard we run our classes in line with the Association of Pet Dog Trainers (www.apdt.uk) and our Welfare & Behaviour Manager Lorna Chadwick is so very lucky to have the help and support of Jenny Mahy mAPDT 01122, Sarah Creasey BSc Animal Science (Behaviour and Welfare) and Anna Brehaut from Canine Behaviour Guernsey. "The time the volunteers donate to helping dogs and their owners is invaluable. They are committed to ensuring our teaching is of the highest standard in line with best practice in animal welfare and canine behaviour; continually updating their skills so we can provide the best help and advice available."

As well as our key trainers we also have other volunteers that come along and observe/help at the sessions and this allows us to share our knowledge and hopefully inspire those not yet dog training to take the leap. Tilly Bisson has been volunteering at our puppy training classes for over 6 months as part of her Duke of Edinburgh Award but has decided to stay on and is a wonderful addition to the training team. In addition to the classes, you may also see these volunteers helping at our fundraising events throughout the year, especially the fun dog show at the Seafront Sunday. So, we'd like to so a MASSIVE thank you and give a HUGE 'round of a paws' (sorry) to the team of doggy experts that support the GSPCA in this area of our work. You really are much appreciated.

If you are interested in popping along to speak to the trainers, observe a session or even become a volunteer in the classes please email: lorna@gspca.org.gg For further information on our classes please visit our website: www.gspca.org.gg/services/puppy-and-beginner-life-skills-classes



**PROUD TO  
SUPPORT GSPCA**

rubis-ci.co.uk | 01481 200 080



## Pigeon Paramyxovirus outbreak

Since the start of 2021 the GSPCA has been called out to, or had brought, in over 300 sick, injured or deceased pigeons and on the 9th of February the GSPCA confirmed Paramyxovirus in the wild pigeon population

Sadly, of the 300 birds that the GSPCA has seen only 17 have survived. This deadly virus has had a massive impact on the pigeon population across Guernsey but a handful of very lucky birds which have been shielding in an isolated area at the GSPCA were able to be vaccinated.

### What is Pigeon Paramyxovirus (PPMV)?

Pigeon Paramyxovirus is a viral disease that primarily affects pigeons but can affect poultry. There are 12 recognized serotypes of avian paramyxoviruses. Serotype 1 contains both Pigeon Paramyxovirus type 1 (PPMV1) and Newcastle Disease virus (NDV), which affects poultry. The virulence (ability to cause disease) of both PPMV and NDV is highly variable. The mortality rate of pigeons infected with PPMV can vary between 10% and 100%. In the current outbreak of PPMV in Guernsey, the mortality among pigeons taken to the GSPCA is currently 100%.

The incubation period can vary from a few days to several weeks. There is no specific treatment for this disease and infected birds often die within 72 hours but may survive with supportive therapies.

### What are the signs of PPMV?

- Nervous signs, including trembling wings and heads, and twisting of the neck.
- Partial paralysis of wings and legs (birds cannot fly, walk and be unable to feed).
- Unusually wet and liquid faeces (diarrhoea) that are often greenish in colour.
- Quietness, loss of appetite and reluctance to move.

### Infection in poultry may cause:

- No symptoms
- Mild respiratory signs (sneezing)
- Reduced egg production
- Nervous signs
- Increased mortality

### How does it spread?

PPMV is very contagious and can spread between pigeons through direct contact with their faeces and respiratory secretions. The disease can be introduced to a loft of kept pigeons through contact with infected wild pigeons and through pigeon transporters that have not been adequately cleaned and disinfected, drinking water in lofts and transporters, pigeon fanciers carrying infection on their clothes, hands and feet.

PPMV can cause disease in poultry if their feed is infected with the faeces of infected pigeons, for example. Paramyxovirus can cause Newcastle Disease in chickens. At this stage, the virus appears to be highly pigeon specific, and no other species have been affected.

### Does it affect humans and other animals?

Some strains of paramyxovirus can potentially cause temporary conjunctivitis and flu-like symptoms in people. However, this is only a risk for lab workers and poultry vaccination teams that expose themselves to very large quantities of the virus.

Paramyxovirus is not a risk to dogs, cats or any other non-avian pets.

### What do I do if I come across a sick pigeon?

Please contact the GSPCA for advice on 01481 257261.

There is no treatment for PPMV other than supportive treatments and badly affected birds should be humanely euthanised.

### What should I do if I keep pigeons?

Most pigeon keepers (racing, show & fancy) routinely vaccinate their flocks against PPMV and if they have not done so, they should do so promptly.

Pigeon owners' primary defence against PPMV1 is to prevent the introduction of the disease into their loft by the implementation of the following biosecurity procedures:

- Preventing wild birds and feral pigeons (and their droppings) from having contact with your pigeons or contaminating their feed or water
- Keeping lofts and equipment clean
- Cleaning and disinfecting footwear and washing hands and clothes after visiting other birds
- Disinfecting equipment used to house, transport, feed and water other birds,
- Limiting any unnecessary visitors to your pigeons' loft.
- Check your birds regularly for any signs of disease. If clinical signs arise, isolate those birds which are showing clinical signs from the rest of the pigeons in the loft and contact the GSPCA in the first instance for advice.

### What should I do if I keep poultry?

Good biosecurity measures, already in place to combat the current avian influenza threat, will reduce the risk of pigeons directly or indirectly infecting poultry. Examples of these are as follows:

- Keep them housed - if you do not have a purpose built building you could use a garden shed, garage or polytunnel (provided there is adequate light and ventilation).
- Block up any gaps in poultry housing with boards or netting to avoid any wild birds getting in.
- If it is not possible to house birds, you must separate them from wild birds in a netted enclosure and ensure that food and water is kept indoors.
- Make your premises unattractive to wild birds using scarers, foils or streamers.
- Store food and bedding inside to reduce the risk of contamination.
- Clean and disinfect - footwear, hard surfaces, equipment and vehicles.

### Register your poultry with the States of Guernsey if you have not already done so

Email farmservices@gov.gg or call the farm services answerphone on (01481) 235740 and provide the following information: Name, Address, Contact details (phone number, email address), Type of birds kept, Number of birds kept, Address where poultry are located, if different to the home address.

The Office for the Environment and Infrastructure will use this information to contact you if there is a disease outbreak or if there are any other animal health/welfare concerns that you should be made aware of.

## Vaccinate your rabbit!

Ask your vet today!

Two Injections.  
Once A Year.  
Rabbit's Life Protected!

Rabbits need vaccinations (just like cats and dogs do) to protect them against serious, potentially deadly diseases. Both indoor and outdoor rabbits need to be vaccinated.

Myxomatosis and RHD (Rabbit Haemorrhagic Disease) cause intense suffering to rabbits. Myxomatosis is spread by biting insects and is highly contagious. RHD1 and RHD2 is a virus spread in many ways, including being airborne, it is also highly contagious and is fatal.

These viral diseases are almost always deadly, but can be prevented through vaccination!

Please visit our website for more information about rabbits.

Adopting at The GSPCA all our rabbits are neutered where possible, fully vaccinated and are treated for parasites.

#adoptdontshop



## Soundtrack

Proudly sponsors the GSPCA



CHURCH SQUARE, ST PETER PORT, GUERNSEY, CHANNEL ISLANDS, GY1 2LD  
Tel: 01481 722178 Email: [soundtrackguernsey@cwgsy.net](mailto:soundtrackguernsey@cwgsy.net)  
Web: [www.soundtrackci.com](http://www.soundtrackci.com)



## The Vetcare Centres

### Les Eturs Veterinary Centre,

Rue des Eturs, Castel, GY5 7DT

Tel: 257708/252943 Fax: 251150

John A. Knight, BVet.Med., MRCVS

### Northside Veterinary Centre,

Northside, Vale, GY3 5TS

Tel: 248464 Fax: 243883

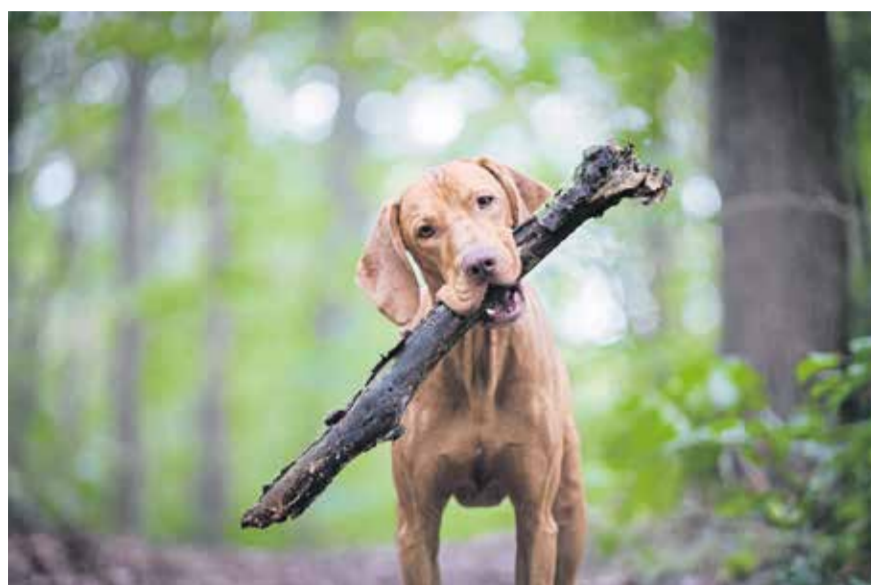
Jean-Paul Segers, DVM, MRCVS

[www.vetcare.gg](http://www.vetcare.gg)



# Spruce Up

Fully qualified and insured tree specialists



Professional and friendly service for:

- Tree Surgery ■ Tree Removal
- Hedge Cutting

For free quotations call:

**07781 407812**

## Our adoption fees

If you were wondering why you have to pay to adopt an animal from the GSPCA, this information may help



EVERY animal that passes through the GSPCA is given a full health check by our vet before it is available for rehoming. During this general health check the veterinary surgeon will check the animal thoroughly including its heart, eyes, ears, mouth, abdomen, skin and coat as well as other areas. Our staff will also obtain the animal's previous veterinary history which will enable us to identify any problems the animal may have suffered from in the past and any treatment it may have received. It is essential that we try to gain as much information about them as we can so that we can give potential adopters as many details as possible about the animal so that they can then make an informed decision before making a lifelong commitment to a new pet.

As well as a full veterinary health check each animal receives the following:

- Vaccinations
- Flea treatment
- Worming treatment
- Spaying and neutering
- Dental check-up
- Microchipping

As well as the above, the adoption fee also goes towards paying for their everyday care and attention, their feeding, and many other aspects of their stay such as behavioural assessments and training (where necessary) as well as home checks and any follow-up care.

With all animals we look to do a home visit unless the animal's enclosure for small species can be brought up to the shelter. Also if you live in rented accommodation or States housing you need to ensure you have written permission.

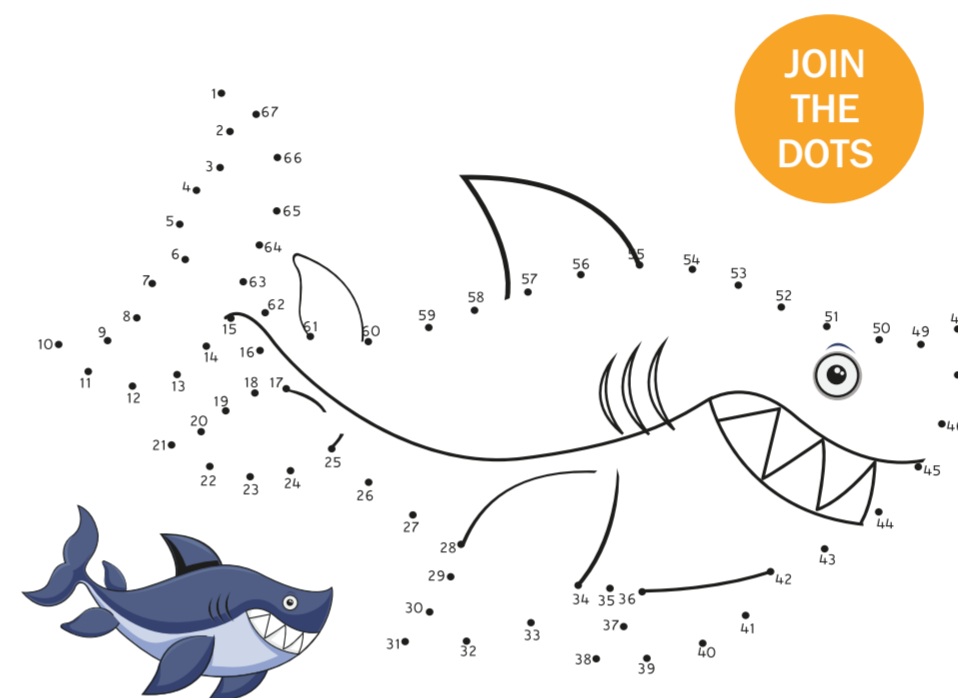
Minimum adoption charges are as follows:

Mice/Rats/Hamsters	£8.50
Chickens	£8.00
Birds (varied)	from £10.50
Guinea Pigs	£30.90
Ferrets	£41.50
Rabbits	£44.00
Cats/Kittens	£109.00
Dogs	£268.00
Reptiles	from £36.00

(Correct as of 1st January 2019, additional costs may apply to certain species)  
Other species vary, please ask for details.

To provide the welfare and care for animals on site the adoption charges only cover part of the costs, please ask how you can support our work.

## Match the pictures



## Scavenger hunt



Bug



Oak leaf



Chestnut leaf



Orange leaf



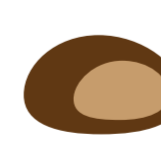
Red leaf



Cobweb



Acorn



Chestnut



Pinecone



Stick



Stone

## Access Scaffolding

Proudly Support The GSPCA



Access Ltd, The Post House,  
La Moye, Vale, GY3 5BZ

**Tel: 07781 146493**



PROUD TO SUPPORT THE GOOD  
WORK OF THE G.S.P.C.A.

Portinfer Coast Road, Vale, GY6 8LG  
T: 01481 255026  
E: gillinghampools@gmail.com  
W: www.gillinghampools.com



- SWIMMING POOL INSTALLATIONS • POOL REFURBISHMENT • POOL MAINTENANCE • POOL & SPA CHEMICALS
- PATIOS & LANDSCAPING • BUILDING WORKS • VILLEROY & BOCH SPAS • POOL ENCLOSURES • ZODIAC AGENTS

Pool Spa & Leisure Shop – Portinfer Coast Road – open all year round  
Monday – Friday: 09:30 – 12:30 Saturday: 09:30 – 17:30 CLOSED Wednesdays



PROUDLY SPONSOR  
THE GSPCA

Call Jonathan 07781 121416 or  
Jacob - 07839 177070  
Email: ossltd@cwgsy.net





## More than 130 years of enriching communities

Northern Trust is proud to support the GSPCA. For more than 130 years, we've been meeting our clients' financial needs while nurturing a culture of caring and a commitment to invest in the communities we serve. It's all part of being a good neighbour.

For more information:  
email [infogsy@ntrs.com](mailto:infogsy@ntrs.com)  
or visit [northerntrust.com](http://northerntrust.com)



FUND ADMINISTRATION | GLOBAL CUSTODY | BANKING | FIDUCIARY SERVICES

Photo courtesy of the GSPCA

## Work2Benefit (W2B) good news

Work2Benefit (W2B) is a mandatory work and training placement during which clients will work on projects which are of benefit to the community or the environment



Placements are unpaid but benefits remain in payment, providing there is regular attendance, and people comply with the requirements of the placement. The GSPCA has been supporting the W2B scheme for a number of years, helping 14 clients return to work. In 2018, Tim Pellett joined the GSPCA as the Community and Training Officer, with a focus on supporting the W2B project with a targeted approach to accepting placements on site to support the role of the GSPCA.

In November 2020 we accepted James Brehaut onto the W2B scheme via Job Centre referral. Over a 10-month period James has been fully involved in all aspects of GSPCA family life, including supporting the GSPCA Christmas Tree sales programme and the more recently our presence at the Scarecrow Festival and Guernsey Classic Vehicle Show. He has fully embraced every task offered, mainly assisting with new or ongoing maintenance projects to assist the smooth running of the animal shelter whilst keeping costs of fixing and mending to within a very tight budget.

He expressed a wish to be more involved directly with small animal care, which was supported by Tim and the supervisors. A progressive support programme was drawn up where James shadowed staff on all the animal care departments for a number of weeks. After a successful probation period, James was offered a paid position after interview and recruitment process in August 2021. We welcome James to the GSPCA team and wish him well in his new career. At time of writing, Matt le Noury, also on the W2B team, has successfully interviewed for a position of maintenance support with the GSPCA team, aiming to start within the next few weeks.

Tim Pellett, Community and Training Officer



Are delighted to be a proud sponsor the GSPCA

ASR Ltd. Tel: 07839 205611, Email: [asrguernsey@gmail.com](mailto:asrguernsey@gmail.com), [www.asrguernsey.co.uk](http://www.asrguernsey.co.uk)

# THANK YOU FOR HELPING

Here are the forms for donations, becoming a member and fund raising



**BECOME A GSPCA MEMBER** for only £10 per year. You can help to keep unwanted, lost, sick, injured and stray animals and birds of the island fit and well-cared for. Simply fill in the form below, add your donation (min £10 but any extra would be appreciated) and post it to GSPCA, Les Fiers Moutons, St Andrews, GY6 8UD

### 1- Choose your Payment method

*Cheque (payable to the GSPCA) or Direct debit (fill the form below)*

**Instruction to your Bank or Building Society to pay Direct Debit.**  
Originator's identification number 01755021

Name(s) of account holders

Account number

Branch sort code

Name of your Bank or Building Society

Address of your Bank or Building Society

Post Code

Reference no. (for GSPCA only)

Please pay the GSPCA Direct Debits from the account detailed on this instruction subject to the safeguards assured by the Direct Debit Guarantee. I understand that this instruction may remain with the GSPCA and, if so, details will be passed electronically to my Bank/Building Society.

### 2- Fill in your details

Name Age

Address

Post Code Tel. No.

Signature Date / /

**BANK'S ORDER** for donations

Name(s) of account holders

Account number

Branch sort code

Name of your Bank

Address of your Bank

Post Code

Will you please pay HSBC Bank plc, High Street, St Peter Port, Guernsey (40-22-25) the sum of £ to be credited to the account of the Guernsey Society for the Prevention of Cruelty to Animals (A/C No: 01755021) on the day / / and a like amount annually thereafter on the same date of each succeeding year until countermanded.

Signature Date / /

**DEED OF COVENANT** for covenanted donations to charities on an annual basis complying with the requirements of Regulation 4 (1) of the Income Tax (Guernsey) (Settlements) Regulations 1979

I (full name)

Of (address)

HEREBY COVENANT with the Committee and Treasurer of the Guernsey Society for the Prevention of Cruelty to Animals, whose address is The Animal Shelter, Les Fiers Moutons, St Andrews, Guernsey, GY6 8UD, that for (years), from the date hereof, or during my lifetime, whichever period is the shorter, I will pay on the / / 202 the sum of £ (state the amount in words) to the said Committee and Treasurer, and thereafter the said sum of £ (state the amount in words) each week / month / quarter / year / so that I shall receive no personal or private benefit from any of the said annual payments or any part thereof.

I am aware that in order to be able to claim the benefit of Section 65 of the Income Tax (Guernsey) Law 1975, as amended, I have to make payments of the amounts and at the intervals specified in this Covenant over a period exceeding three (3) years or during my lifetime, whichever is the shorter.

In witness thereof I have hereunto set my hand this

Signature Date / /

### CERTIFICATE OF WITNESS

I hereby certify that a) I am a member of one of the categories of persons mentioned in Regulation 5 of the Income Tax (Guernsey) (Form and Manner of Settlements) Regulations 1979 (4), b) The above named person has signed this settlement in my presence.

Signature of witness

Address of witness

Post Code

Occupation of Witness

Date / /

Additional Notes (delete as appropriate)

- 1) If the settlor wishes to claim the benefit of Section 65 of the Income Tax (Guernsey) Law, 1975, as amended, this period must exceed three (3) years.
- 2) The date specified initiating the payments MUST be later than the date of the signature of the Covenant.
- 3) Witnesses MUST be in one of the following categories: Accountants, who in accordance with the provisions of sub-Section (2) of Section 78 of the Law are entitled to appear in a professional capacity before the Income Tax Authority in connection with an appeal under the Law. Advocates of the Royal Court, Bank Managers, Douzainiers, Jurats of the Royal Court, Medical Practitioners, Members of the States of Deliberation, Notaries Public, Parish Constables

## GET IN TOUCH WITH US

Les Fiers Moutons, St Andrew's, Guernsey, GY6 8UD

Tel: 01481 257261 (9am to 5pm)

# THE ANIMAL FIREWORK CODE

Here are some basic guidelines that will enable you to help all of our animal friends to stay calm and safe on and around Bonfire night



### HELP US TO CONTINUE TO KEEP THEM SAFE!

The GSPCA would like to urge everyone to follow our Animal Friendly Firework Code and protect your pets and the local wildlife. Please make sure that your pets are wearing a collar with an identity tag in case they manage to escape from your home. We would also strongly advise that you have your pets microchipped as this enables us to reunite them with you much more easily should they run away. Please call the GSPCA for further details on having your animal microchipped. Walk your dog during the day and as soon as it gets dark keep your dog or cat inside. Ensure all of the windows and doors are locked including dog and cat flaps. Go to an organised display if you can, however don't take your dog. If you are going out then draw your curtains, put the television or radio on and provide your pet with a safe hiding place so they feel secure. If you are having a private firework display then build your bonfire as late as possible to reduce the likelihood of any wildlife taking up residence. Before lighting the fire check the area thoroughly for hedgehogs. We are always saddened by

the number of hedgehogs we receive that have suffered severe burns. Do not light fires or set off fireworks near trees where birds are likely to be roosting. Please notify your neighbours of your intentions. Especially the elderly and those who have pets. When horses are startled, they are likely to bolt and can suffer serious injuries. Ensure that all horses, ponies and donkeys are securely stabled with the doors closed. Remember to bring guinea pigs and rabbits inside or place under cover in an outbuilding. If you know that your pet is frightened by loud noises such as fireworks or has an existing heart condition please contact your vet for advice. Please clean up after firework parties. Litter is hazardous to domestic and wild animals. Remember NEVER let fireworks off near animals. To notify us of your event please email the GSPCA team on [admin@gspca.org.gg](mailto:admin@gspca.org.gg), [stevejbyrne@gspca.org.gg](mailto:stevejbyrne@gspca.org.gg), [lornaprince@gspca.org.gg](mailto:lornaprince@gspca.org.gg) or call 01481 257261 and we can add your firework display to our calendar. Please let us know the location, date and times it is planned for and also if it is a public or a private event.

## THE BEST BET FOR YOUR PET!

We have a huge range of top brand pet feed, toys and bedding for cats, dogs, horses, rabbits, ferrets, guinea pigs, hamsters & birds.

01481 266355  
[venturepetrolandpets.gg](http://venturepetrolandpets.gg)

**venture.**  
*petrol and pet feed*

## HELP WITH NEUTERING FOR CATS

To avoid over population and the spread of feral cats, Animal Aid are offering a neutering service

If you can not afford to have your cat spayed or castrated, we can help. Please call us on 07781150388



**Cat Fact**

A single pair of un-neutered cats over the course of 7 years can produce 420,000 kittens!

**GUERNSEY animal aid**



## For Happy Trained Dogs



Picture credit to: Andrew Le Poldreux TALLPICTURES.com

The Island Dog Training Club has been promoting responsible dog ownership for 60 years. Classes are held at our dedicated premises in Collings Road, Monday to Friday. Our trainers, who are all volunteers, focus on positive reinforcement and motivational techniques.

We offer a range of training, from the popular Puppies and Newcomers courses (pre-booking essential), the Kennel Club Good Citizen Awards, to competitive Agility and Obedience.

Unlock your dog's potential and enjoy the rewards of owning a well behaved and motivated dog.

Visit [www.idtc.co.uk](http://www.idtc.co.uk) for information on all our activities, application forms and dates for Puppy/Newcomer Courses and contact details.

Stan Brouard