



Winter Newsletter 2014

www.gspca.org.gg 01481 257261

Easter Saturday 19th
April Sponsor Dog Walk
with Island FM, The Pet
Cabin for the GSPCA &
Help a Guernsey Child
930am from North Beach
Car Park

www.gspca.org.gg



**141 Years
Old!!**



Meet our new Winter Arrivals page 4


**From 28th April
GSPCA Cupcake
Week**

Also Featured in this Issue:


Forth coming events	2	Releasing Hedgehogs	10
GSPCA Wish List	3	Late night shopping and pop up shop, how did we do?	11
Winter Arrivals	4	Animals in need of homes	14-16
Seasonal Advice	5	Happy Tails	17
GSPCA Purple Week	6	Vacancies	18
Staff and Volunteer Awards	9	Gert, the GSPCA Duck	20

Forth Coming Events

 **Monday 10th February, 7.30pm** the GSPCA Annual General Meeting at the Animal Shelter

 **GSPCA Purple Week** starts on **Monday 10th February!**


From organising mufti days to wearing a GSPCA purple wrist band or lock your boss up at the shelter for the day, there are many ways to help raise funds for the GSPCA during the week when we will celebrate 141 years helping animals in Guernsey.

 Easter term week from **Monday 7th—11th April** pop along to the GSPCA between 10am and 5pm to see some of the animals in need of homes in our Training and Event Room.


Other major events will be -


 Easter Pop Shop in Smith St thanks to OSA Recruitment Monday 31st March—Thursday 3rd April

 From **Tuesday 1st April** Pet Adoption Month

 **Friday 4th April** World Stray Day—we have a stall in Market Square—pop in to the Market Bistro for a coffee who will be donating to the GSPCA for every coffee sold


 **Wednesday 9th April** Volunteer Induction Evening


 Easter Saturday 19th April Sponsor walk with Island FM, The Pet Cabin & Help a Guernsey Child 930am from North Beach Car Park—see our website for details (Also Police Students are doing a walk on the Sunday)

 Pet Bereavement Course for Pet Professionals and Volunteers 23rd April 6.30pm

 Starting **Monday 28th April** GSPCA Cupcake Week

 **Car Boot Sale with MENFUN Sunday 11th May** at Alliance Car Park

 **Sunday 1st June** GSPCA Dog Show, sponsored by Property Link at Fairfields

 **Saturday 5th July** Viva Las Vegas Summer Ball & Casino Night, in aid of GSPCA & Thomson Memorial Trust


 **Sunday 14th September** GSPCA Seafront Sunday

 **Sunday 5th October** Animal Castle Day at Castle Cornet

 For a

Daz's Diary - preparing for 6 marathons 7 days in the Sahara Dessert!

You may have read in our last newsletter that Daz Carre will be running the Marathon des Sables in April 2014. This is no ordinary marathon, but an ultra marathon across 150 miles of the Moroccan Sahara Desert! At the GSPCA, we are all in awe of Daz taking on this challenge and very grateful he has chosen the GSPCA as one of his charities (with the Specsavers Childrens Charity as the other). Daz has been training hard but still needs your help. He has currently raised £400 towards his £2000 goal for us! If you would like sponsor Daz, please visit:

 <http://www.justgiving.com/Daz-Carre1>
<http://www.justgiving.com/Daz-Carre>



The Fermain Tavern has arranged a gig to support Daz. The line up includes Brunt, Buffalo Huddleston, Flashmob, Byzantium Neckbeard and Nemesis. The event is on the **22nd February** and early bird tickets are only £5.



GSPCA Wish List



The GSPCA has been helping care for animals in Guernsey for 141 years and we have been at our current address since 1929.

At the Shelter we are working hard to ensure the animals have the best of care and great facilities to help care for them.

We need to ensure that we are leading an example on how animals should be kept now and in the future.

Here is how we would like to update our facilities:

- We looking to build a new Cattery, Quarantine and Isolation Building. Our old quarantine area is no longer suitable due to its age. The new building will also contain grooming facilities and a larger reception room. The planned building will be two stories and, although we do not have any final figures, it is likely to cost in excess of £1,000,000.



- On a smaller scale, our current washing machine and dryer are coming to the end of their lives and we really need to replace them very soon with new commercial sized washing facilities. The machines cost in the region of £4000-5000 each and due to the 200-300 animals we often have at the Shelter there is a lot of bedding to be washed. If you can help we would love to hear from you.

- The GSPCA are looking at improving and renewing the flooring in the kennels at the Shelter. This will not only help us care for the dogs in need of a new home, but also all the dogs that board with us while their owners are away. To carry out this work throughout the kennels has been estimated at a cost of £15,000 for the 41 kennels and walkways we have at the Shelter.
- We would also like to improve the facilities we have for our hedgehogs and wildlife by tiling the floors in four areas of our wildlife unit. The cost for the tile and accessories would be approximately be £1500.
- Our seal pens are also in need of a revamp. The paint on the walls does not stand up to the cleaning required for 2 seals pups! We would like to tile and decorate the pens we currently have. This would make cleaning and maintenance much easier, which will help the seals relax and reduce stress during cleaning. To tile the room and carry out the work would cost approximately be £2000.



You can find out about our plans and wishes on our website by going to—

<http://www.gspca.org.gg/about/our-plans-wish-list>

On our Wish List page you can see a link to our Amazon Wish List which is a great way you can help us care for the animals at the Shelter, as it is full of items that we really need here at the GSPCA.

Winter Arrivals

The storms this winter have brought wildlife casualties into the shelter. The rough seas have disturbed areas of oil which sea birds, such as Guillemots can get caught in. The oil penetrates the feathers making it very hard for the birds to fish. When the birds try to clean their feathers they ingest the oil and can become very sick. We currently have 4 guillemots on site.



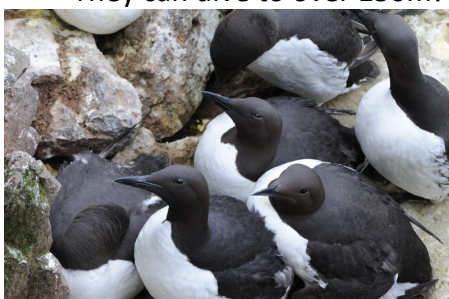
The rough weather has also made it hard to our local Atlantic Grey Seal pups. In just 24 hours, the GSPCA rescued 2 emaciated pups. At this time of year, the pups will have weaned from their mothers and should weigh around 40kg. On arrival at the shelter, Trinity, found near Pleinmont, weighed 18.8kg and Eden, found in St Peter Port harbour, weighed just 15kg! Both seals are doing very well and will be looked after here until they are strong enough to survive in the wild. They will both eat hundreds of fish during their stay. **To donate to Trinity and Edens Big Fish Appeal please visit <http://www.justgiving.com/Gspca-Guernsey1>**



Guillemot Facts!



- Guillemots defend the smallest territory of any bird—a space of 5cm around their egg—this helps protect them from predators!
- Their egg is pear shaped to stop it rolling off the steep cliffs!
- They can dive to over 150m!



Seal Facts!

- Atlantic Grey Seals can control their heart rate while they dive. It can drop to 4 beats per minute!
- These seals can dive to over 300m!
- Their whiskers are so sensitive they can hunt in complete darkness!



How to recognise if a seal needs help:

- Seal pups should have a lot of fat on them for warmth and energy. They live off this fat supply while learning to fish.
- In a healthy seal you should be NOT be able to see a defined neck. If you can see a thin neck, like in the picture below, then that seal may need some help.
- If you are in any doubt, please give us a call. Do not touch or stress the seal.



Seasonal Advice - Winter/Spring Pet Advice



Although we have passed Christmas and spring is on its way, there is still a chance we could have some snow again this year. Here are a reminder of some dog walking tips for the snow:

- Place your dog in a sweater or dog coat to help keep them warm. If you have a white dog then a fluorescent coat is advisable and during the dark nights are ideal (these are on sale at the shelter.) Don't forget to wrap up warm yourself.

- Keep the walks short. Winter walks should not be as long as summer strolls. A couple of times around the block should suffice, but take care underfoot.

- Ensure the dog is on a lead, wear sturdy footwear and don't forget your poo bags. Dogs can lose their scent in the snow, so should be kept on a lead for the duration of the walk.

- Stay close to home or your vehicle. If your dog shows signs of suffering from the cold weather, you need to be close enough to return him quickly to a warm location.

- If you do not have dog booties for your pet's feet, take a towel with you on the walk and periodically wipe their feet off.

- Wipe paws after the walk as well. This removes any ice that has stuck to the bottom of his paws. Take a towel and wipe them down thoroughly to prevent frost-bite. It also removes any grit that may have been picked up or caused a cut, so please have a good look over your dogs feet.

- Don't let your dog lick his paws before you wipe them off. Salt/grit and antifreeze found on the ground can poison a dog.

- Also watch out for dogs' paws becoming impacted with snow - this can cause them discomfort.

- Keep away from ponds, lakes and streams that are iced over. Thin ice may break under a dog's weight.

- If it is freezing outside, skip the walk. Release your dog's energy by playing inside your home.

Spring is approaching and if the weather stays mild we may start to see baby birds around the island.



As a general rule, it is best to leave baby birds alone.

A baby bird has a greater chance of survival in the wild than it has being hand-reared by man, as their parents teach them how to forage and fend for themselves.

Around 2 weeks after hatching young birds usually leave the nest, just before they learn how to fly.

These fledglings are almost fully feathered, able to walk, run and hop on to low branches and will try to hide in undergrowth where they are fed by their parents. Parent birds are not usually far away, but will not return until you have gone. Fledglings can usually fly within a day of leaving the nest.

If you do find a troubled fledgling, monitor the situation from a distance for at least two hours. You will almost certainly find that the parents have taken care of their youngster within this time.

If you are concerned about its safety try to put it nearby on a ledge or somewhere it will be out of the reach of cats. You may want to use an ice cream container with kitchen towel in and place it in a tree or ledge.

If, after monitoring, you think a fledgling is genuinely orphaned or sick please call the GSPCA on 01481 257261 and choose the emergency option. Alternatively, bring it to the Animal Shelter where we have hospital cages set up ready for them. Please do not try and care for these birds yourself. If you need further help and advice, again please call us on 01481 257261.

The arrival of Spring also means Easter and Easter Eggs! We may all love chocolate, but it is highly poisonous to many pets, with dogs being most commonly affected. Chocolate contains theobromine, which is similar to caffeine and highly toxic to dogs and other pets. High quality chocolate poses the biggest risk and an average bar of dark chocolate (30-45g) contains enough theobromine to fatally poison a smaller dog.

The effects of chocolate poisoning in dogs usually appear within 12 hours and can last up to three days. Initial signs can include excessive thirst, vomiting, diarrhoea, a tender tummy and restlessness. These can progress to hyperactivity, tremors, abnormal heart rate, hyperthermia and rapid breathing. In severe cases there are fits, heart beat irregularities, coma or even death.

If your dog shows any of these signs please contact your vet immediately for advice.



141 years old!

10/02/14—16/02/14 is Purple Week!



The GSPCA was founded in 1873 and to help celebrate 141 years caring for animals in Guernsey we are asking for your help. The GSPCA week starts 10th February and celebrations will carry on until the 16th, with our anniversary being the 14th February. There are many ways you, your school, group, work place or business can help celebrate...



Why not wear purple for the day? The GSPCA logo is purple and we are encouraging people to wear or accessorise with purple for a day or more during this week. A Mufti or Dress Down Day is a great and fun way to raise funds to help animals in Guernsey and celebrate our 141st anniversary.

Dress as an animal for the day? Its fun and a great way to celebrate the fact that the GSPCA help 1000's of animals and birds every year.

A sponsored event? From a sponsored silence to a wax, stop smoking to a dog walk, there are many ways you can raise funds to help animals in Guernsey.

Sell goods for the GSPCA? The GSPCA has a number of new GSPCA goods on sale including pens, pin badges, wrist bands, car stickers and small toy dogs, which we can provide in a counter box.

A collection box / wishing well? The GSPCA are always looking for places to locate collection boxes. If you have a bigger premises maybe you could accommodate one of our GSPCA Wishing Wells. The first of these can be seen at the Shelter. They are made on site and are a fantastic way to highlight the need of raising funds for the GSPCA and to show that your business supports our work of caring for animals in Guernsey.

We are looking at holding a number of events during the week and if anyone has any ideas please let us know.

To register your event, get a sponsorship form or for more information please email stevejbyrne@gspca.org.gg, call 01481 257261 or visit <http://www.gspca.org.gg/page/gspca-purple-week>

Some of our staff at the GSPCA will be getting involved by dying their hair purple! Shelter staff Helen Holmes, Helen Sharman, Anna Paint, Annie Janes, Lucy Ogier and Sheryl Carre are taking the purple theme to their heads and will be dying their hair purple.

Sheryl Carre Animal Care Assistant said 'I'm dying my hair purple along with a team of staff for GSPCA. Our manager Steve Byrne has said we could make our faces purple but we think he may be taking it too far! Please sponsor us to help animals in Guernsey.'



SOME GSPCA FACTS

Did you know the Shelter has cared for two lion cubs and two monkeys in the last few years?

Kodak and Lodi are now enjoying a happy life at The Monkey Sanctuary in Looe and Marina and Sarnia were transported to a reserve in Africa.



Did you know the GSPCA has 200 - 300 animals in their care at any one time?

At the moment this includes dogs, cats, seals, hedgehogs, degus, pigeons, rabbits, tortoises and more!

Did you know in October 1929 the GSPCA purchased its present site at Les Fiers Moutons, St Andrews?

The house, outbuildings and $\frac{3}{4}$ vergee of land were bought freehold for £400.00 plus a further 2 verges of land for £120.00 and an extra £5.00 included the spring and well!

Do you know how much it costs to care for Guernsey's animals?

It costs over £600,000 a year to help care for the 1000's of animals and birds we have through our doors, provide the 24 hour 7 day a week emergency service for animals, the welfare work, dog training, education and more.

Corporate Days

Every year we are approached by local businesses who are interested in donating some of their staff time to help out at the GSPCA.

We are always overjoyed to make new connections and for the help offered. If your work place is interested then you can find out all the details by calling 257261 or check out -

<http://www.gspca.org.gg/about/corporate-and-group-days>



Follow us
f t i n



**Buzz
around
the Bailiwick
and beyond!**

Jump aboard Bumblebee for our new Cruise & Dine package (£29.50 inc. 3 course meal). Maybe a Seal Safari or Coastal Cruise. Hop across to Alderney for a day trip or weekend break. Check online for info on bespoke events like Lunch in France or the best children's parties in the islands.



**bumblebee
BOAT CRUISES**

Book online at bumblebee.gg or call 720200



Pet Plan Charity Awards

Petplan and the Association of Dogs and Cats Homes (ADCH) have joined forces for the second year of these Animal Charity Awards. The inspirational event celebrates outstanding animal charities and not-for-profit organisations across the UK, Ireland and Channel Islands who have gone that extra mile to help rescue and rehome animals in need.

Petplan has worked closely with animal rehoming centres for over 36 years and sees first-hand the fantastic work that goes on every day to help improve the welfare of animals. These awards provide an opportunity for people to recognise the dedication and commitment of charity staff and volunteers, and they also allow pet owners to say 'thank you'.

There are three categories for the awards. These are:

- **Animal Charity Team of the Year**
- **Animal Charity Employee of the Year**
- **Animal Charity Volunteer of the Year**

If the GSPCA has helped you in anyway, maybe we helped find you a companion, looked after you pets while you were away or rescued wildlife on your land, you can nominate us by visiting

<http://www.petplan.co.uk/aboutpetplan/charity-awards-2014.asp>



Leading the way in pet healthcare



To benefit from our vast pet healthcare experience and 24 hour emergency cover; for informed advice or to book an appointment call:

Route Isabelle Surgery: tel **723863**
Route Isabelle, St. Peter Port

L'Islet Surgery: tel **241056**
Bakery Complex, Tracheries Road, L'Islet

www.isabellevets.co.uk

IsabelleVets
We love them like you do

GSPCA Awards: Autumn/Winter 2013



The GSPCA would not be able to function without the hard work and dedication of our staff and volunteers. The GSPCA awards are presented quarterly and nominations come in from staff, volunteers and the public. Winners receive a certificate and a prize. If you would like to nominate and say thank you to a staff member or volunteer, please visit:

<http://www.gspca.org.gg/services/vote-staff-member-or-volunteer>

Volunteer Awards



Jackie Le Marchant

'Always in early to help in hospital. Jackie is very polite and helpful.'

Lucy Ogier



'Can do any department at the drop of a hat and always does her best.'

'Works hard, never moans and just gets on with things.'

Jackie Solway

'Jackie has been a huge help in rearing and caring for some of our hand reared kittens that we have had in. One phone call is all it takes and Jackie is here. We know they will always be in safe hands with her and all her experience that she has.'

Rebecca Martin

'Anything to do with farming and cattle or similar Becca is always first point of asking she helps so much with it. She is always helpful.'



Sue Digard

'Always cheerful and willing to help'



Sarah Ozanne

'Always smiling and happy to help.'

'She has done so well in the short time she has been here. Always wanting to learn and improve the hog department.'

Staff Awards



Anna Paint

'With cats being over full, Anna has been a star. She works so hard to care for them. Anna starts early and finishes late all for the cats.'

Inez Rawcliffe

'Once finished in her own unit, always helps in other units.'

Collette Pattimore

'Once finished her department without complaining at all Collette helps others, does washing or anything that needs doing.'

Releasing Hedgehogs

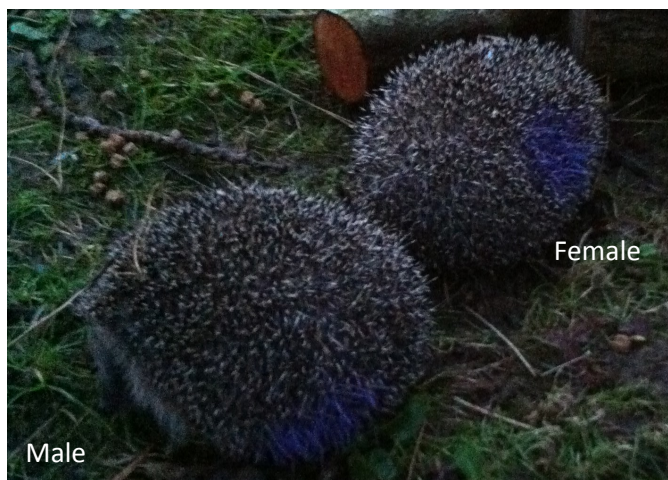


Every year the GSPCA is very busy looking after local hedgehogs. Hedgehogs are brought into us for a variety of reasons, some are found with cuts or wounds, some with flies, maggots and ticks, and others who are very underweight. Any hedgehog that is seen out during the day needs urgent help. We also see hedgehogs that have been injured by strimmers and hedge trimmers.

Hedgehogs usually hibernate between November and mid to late March. But if the weather is mild and food available then hedgehogs may remain active into November or December.

Hedgehogs can be released all year round, providing they have enough weight to survive the winter. If possible, we release the hedgehogs back to where they were found. All hedgehogs released from the shelter are microchipped and marked with a small blob of purple paint. This does not affect the hogs, but makes it easy for us monitor the hog population. If you see a hog with a purple spot on the right shoulder, this is a female and a

spot on the left hip, this is a male! These two were released at the shelter.



We release hedgehogs at the following weights:

April - mid Summer: 400g

Sept - Nov: 500 to 600g

Dec - March: 600 to 700g

At these weights they should be strong enough to survive if the winter is mild and hibernate if the weather gets colder. To help the hedgehogs, we will not release if the weather stays colder than 5°C for four consecutive nights.

Hedgehogs help control many of the pests in our gardens. To make your garden 'hog friendly':

- Provide hedgehog homes, for example place a piece of board against a pile of bricks or leave heaps of leaves.
- Leave food, such as minced meat, fresh liver, tinned dog food (not fish-based) and fresh water.
- Make sure you dispose of your rubbish safely and store any items for recycling in a safe place away from inquisitive Hedgehogs.

Please remember if you find any sick or injured Hedgehog or any animal to call the GSPCA on 01481 257261.

Late night shopping and pop up shop, how did we do?



Thank you to all that supported the GSPCA Christmas Pop Up Shop and Late Night Stall during the Thursday nights in the run up to Christmas.

Well over £2,000 was raised between the two and we must thank OSA Recruitment, who are based in Smith Street, for this wonderful opportunity once again.

Helen Holmes ran the shop and said 'We had all sorts of goodies on sale and even a giant Dulux Old English Sheep Dog on auction, but don't worry he was a cuddly toy.'

'The dog went to the highest bidder, which was £85 and despite a very bad week with the weather it was wonderful to see everyone come up and support us.'

'I think with all of the goodies bought there would have definitely been some very happy pets and owners this Christmas.'

Steve Byrne GSPCA Manager said 'We must thank the team at OSA Recruitment for this opportunity for the Pop Up Shop and to all that popped in and supported Helen and our wonderful volunteers that helped out during the week before Christmas.'

'We must also thank everyone that helped with the Late Night Shopping Stall and it was lovely to say this year two out of the three nights were lovely and dry.'

'A huge thank you to all that supported and were involved in raising just over £2,100 to help the many animals in need in Guernsey.'



If your group, school or club would like to visit the GSPCA, or you would like us to visit you, please give us a call.



The NEW GSPCA Online Shop!!



Our new online shop can be viewed at <http://www.gspca.org.gg/shop>

The GSPCA rescued, rehomed, rehabilitated and re-leased over 2000 animals during 2013 and by purchasing goods from our online shop you'll be helping those animals in our care.

The Online Shop has a number of GSPCA branded goods from tops to teddy bears, pens to pin badges, wrist bands to baseball caps and much more.

You can click and collect the items or we also have delivery options for both Guernsey and the UK (for other overseas options please contact us via email).

Currently we have a range of over 20 products but please keep checking as we broaden the choices available.

Steve Byrne GSPCA Manager said 'We must thank Indulge Media who support the GSPCA by creating and developing our website and the Shop is the newest edition to the pages, offering supporters a chance to purchase GSPCA goods from the comfort of their own home.'

We also have a range of new t-shirts and hoodies, that would be perfect to wear throughout the GSPCA purple week! Here you can see them modelled by GSPCA staff.



GSPCA Membership as a gift



For only £10 a year you can join as a GSPCA Member and be part of one of the oldest charities in Guernsey. We can also arrange Membership as a Gift on request.

As a member you will receive our Newsletter 4 times a year and be invited to attend our Annual General Meeting. We are planning other rewards for members in 2014 so watch this space.

www.gspca.org.gg/about/gspca-membership

Could your business or work place support the GSPCA in 2014?

Advertise here to help animals in Guernsey!



"I support local businesses and I call upon other local people to use local businesses."



There are many ways of supporting the GSPCA and we always love to hear from individuals, businesses and companies who would like to support our work of caring and rescuing animals in Guernsey around the clock, 365 days a year.

For more information, please visit or contact GSPCA Manager Steve Byrne at the Shelter.

<http://www.gspca.org.gg/about/how-your-business-can-help-gspca-corporate-sponsorship>

If you would like to advertise your business or services in this Newsletter then we would love to hear from you.

Please call the Shelter on **01481 257261** or email stevebyrne@gspca.org.gg



THE BEST COMMERCIALS FOR GUERNSEY



VAN



DOUBLE CAB



MPV



PICK UP



LOADHOPPER



TIPPER

3 YEAR/60,000 MILE WARRANTY
FULLY UK TYPE APPROVED
DEMONSTRATION MODELS AVAILABLE
LARGE RANGE OF OPTIONS
FINANCE & LEASING AVAILABLE

THE CHOICE OF THE GSPCA



PRICES START AT £7,495 ON THE ROAD
FULL TANK OF FUEL INCLUDED
FIRST REGISTRATION FEE INCLUDED
EXTENDED WARRANTY OPTIONAL
SERVICING PACKAGES AVAILABLE

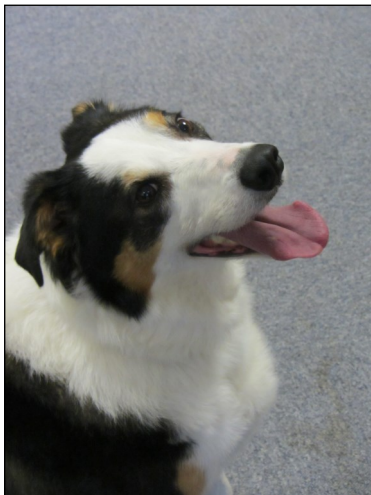
Carrus Automotive Limited, Landes du Marche Garage, Vale, GY6 8DJ, Tel: 256555, Fax: 253987, Web: www.carrus.gg

Animals in need of a home... can you help them?

Beautiful **Inca** is a 6 year old husky in need of a fun active home. She has been at the shelter for 5 months and we can't understand why! She has a lovely temperament and is very chatty! She does need owners that have an understanding of the breed and are prepared to maintain her coats and offer her a high quality diet. She cannot live with cats or small furries, but could possibly live with another dog and children. In this picture Inca is waiting for school to finish on her day out!

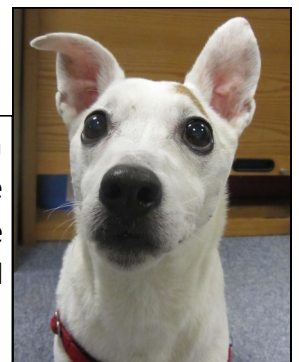


Barney is a big collie cross. He loves people, attention and games. Barney is very clever and it doesn't take him long to work out puzzle toys. Due to Barney's size he can be a bit of a handful, so is looking for a home with experienced dog owners and no small children. He has been at the shelter since November 2013 and we are really hoping to find him a home soon.



Buddy is a very active and playful young man with so much charisma and character. He loves playing with toys and will happily play alone or play retrieve games for hours (he will do anything for a tennis ball)! He loves people and is good with other dogs so would make a fantastic addition to a active fun family. Buddy will need lots of opportunity to run about, go on long walks and to keep his collie brain active. If you can give him this he has the potential to become a wonderful companion. If this sounds like your family then please get in touch.

Fluke is a 14 year old Jack Russell Terrier. He has been with us for a very long time now. Fluke needs a home without other dogs, cats or young children and someone to keep an eye on his sensitive skin. Please give us a call if you think Fluke could be a good companion for you!



Animals in need of a home... can you help them?



Bella is a lovely cat looking for a home. She is only 5 years old, but has a skin condition that makes her look a little older! Sadly, due to her skin, Bella is always over looked. She needs regular grooming, but is very good and easy to groom. She loves to attention, to play and is brilliant with children! Bella will make a amazing pet for someone who can see past her condition.



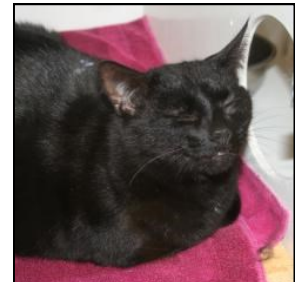
Kenya is a very cheeky cat, but has calmed down a lot since arriving as a stray and is now coming to us for a fuss and strokes. He needs a quiet home that has no children or visiting children, as gets very worried by them. He is also going to be a bit of a hunter!



Pedro is a stunning cat. He does not like a lot of attention, but would be a perfect cat for a farm or stables. He would be able to keep control of any mice or rabbit problem!



Moonshine came in to us at 4 weeks of age and is now 5 months old. He is a very active cat and loves to play. Moonshine does like to play roughly with hands and is in training to stop this. He needs a home with experienced cat owners and no young children, so his training will be able to continue. Due to his boisterous nature, if Moonshine were to live with another cat or dog, they would have to be very tolerant!



Mitzi would be ideal for people who like the presence of a cat around the home. Mitzi is not a lap cat and prefers to do her own thing, she likes attention on her terms!



Robbie is out one eyed ginger tom cat is back again. Robbie is quiet a nervous cat and is terrified of men, but if you give him a chance he can become a lovely cat. Due to his nerves, he needs to live in a quite home and be the only animal.

Mr Chips is our diabetic cat. He is a beautiful, big, silver tabby with lovely green eyes. He is looking for a home with people who will be able to manage his diabetes by giving in insulin injections twice a day and feeding him a special diet. Do you think you might be able to help?



Animals in need of a home... can you help them?



Meet our Degus:

Degus are native to Chile and live in the Andes up to 1,200m! Degus are friendly, inquisitive and active during the day. They can become tame with lots of attention. Degus usually live between six to eight years. They need to be entertained and live in small same-sex groups.



The GSPCA currently has lots of lovely rabbits looking for a home. Please contact us if you think you could care and provide for one of our bunnies.



We also have a few chickens looking for a home. We would ideally like to home these to someone with a complete set up, however we do sell chicken runs at the shelter. If you would like to be able to have fresh eggs for breakfast please give us a call!



Daffy is one of our many birds looking for a home. We have a variety different birds available, including budgies, cockatiels and a Patagonian Conure. Please give us a call at the shelter if you are interested in rehoming any of our birds.

Taking on any animal is a big responsibility. They require care, attention, time and love. We urge everyone to seriously consider whether they can provide for an animal and avoid impulse buying.

GSPCA Adoption Charges:

Dogs	£160	Guinea Pigs	£15
Cats/Kittens	£80	Birds (varied species)	From £12
Rabbits	£29.50	Chickens	£6
Ferrets	£25	Mice/Rats/Hamsters/Tortoises/Degus	£6

'Happy Tails!'

Here are some of the animals we have rehomed since the last newsletter...





Volunteers Wanted



We are now holding Volunteer Induction Evenings at the Shelter. Our first induction evening was fantastic, with 30 new volunteers signing up! This will ensure all the animals get as much love, attention and exercise as possible.

If you are interested in volunteering, our next induction evenings are:

6.30pm Wednesday 26th February

6.30pm Wednesday 2nd April

For more details please call Steve or e-mail him at:

stevejbyrne@gspca.org.gg

All welcome but please note: to be a volunteer on site you must be aged 14 years and over, although those under that age can always help fund raise for the Shelter.



Vacancy: Maintenance and Grounds Assistant

We currently have a vacancy for a Maintenance and Grounds Assistant at the GSPCA. This is due to Ryan, who has been with us in the role for nearly 2 years, sadly leaving the team to move on to a new career path.

We have 21 staff at the Shelter and over 200 volunteers. Not only do we have to care for the many animals, but we also have to look after nearly 4 acres of land, 4 vehicles and many buildings.

This role would be working with our Maintenance Manager, Ian Power (fondly known as Kip), who cares for the grounds and buildings and works towards achieving the many projects we have ongoing at the Shelter.

The closing date for the post is Friday 7th February 2014. To find out more please visit:

<http://www.gspca.org.gg/blog/vacancy-maintenance-and-grounds-assistant-gspca>



Please Sponsor an animal this Winter



ANGEL Sponsorship Form

Office use only
Date received -
Sponsorship Number -

In 2019 it cost over £500,000 to keep the GSPCA going. We rely on your donations. Everything we achieve is thanks to people who really care about animals - like you!
To see some of our plans visit our website and go to - <http://www.gspca.org.gg/about/our-plans-wish-list>

Bank Details -

Surname ☐ Title ☐

Forenames

Home address

Postcode

Telephone Home - Mobile -

Email -

Please send me my quarterly Newsletter by post by email

I enclose a cheque or postal order for £ made payable to: GSPCA.

To pay by credit/debit card, please fill in your details and amount above and your card number below.

Access/Visa/Mastercard/CAF charity card/Maestro (delete as appropriate)

Expiry date

Valid from:

Issue no. (Maestro)

To set up a Standing Order please complete details below and return to the Shelter.

To The Manager:		Please Pay:	
Your Bank:		Payee Bank:	NatWest
Your Bank Address:		Payee Account:	GSPCA
		Payee Sort Code:	60-09-20
		Payee Account:	06013740
		Payment:	
		Frequency:	
Account No:		Date of 1 st payment:	
Sort Code:		Reference:	
Signature:			
Print Your Full Name:			

It costs on average £15 a day to care for a dog at the Shelter, £10 for a cat, £6 for a rabbit or ferret as well as our hedgehogs and other wildlife.

To neuter, deflea, worm, feed, treat, microchip animals in our care we need your help. Many of the animals come to us sick or injured.

From as little as £2 a month you can help animals in Guernsey.

Yes, I'd like to become a GSPCA regular sponsor.

Please Return All Forms to -
GSPCA Animal Shelter, Les Fiers Moutons, St Andrews, Guernsey, GY6 8UD

Details of Sponsorship

I would like to sponsor (please circle)

A Kennel A Ferret Pen A Cat Pen A Rabbit Pen
A Hedgehog Unit The Wildlife Unit

For me ☐ as a gift ☐ in memory of ☐

(please fill in details below)

Your details (please use block capitals):

Title: Name:

Address: Post code:

Email address:

(by providing us with your e-mail/telephone number you are giving permission for the GSPCA to contact you by these means with the GSPCA Sponsor Scheme information)

If you are making a gift of your sponsorship please fill in the name and address of the recipient below.

Title: Name:

Address: Post code:

What is the occasion?

Please give any relevant date:

If you are sponsoring in memory of a pet please write the name and short message below.

Name:

Message:

I would like to receive information about GSPCA events: yes / no

I would like to receive information about volunteering for the GSPCA: yes / no



By sponsoring an animal pen you can help 1000's of animals in Guernsey every year.

We're now on Just Giving



Charity Shop



We're always looking at ways to raise funds to help the thousands of animals that come through our doors every years.

If ever you fancy doing a sponsored event for the Shelter you can not only download a Sponsor Form from our website but you can also easily create your very own Just Giving page to monitor how much you are raising.

All you need to do is check out our page and you can donate online, set up monthly giving or even your sponsorship page -

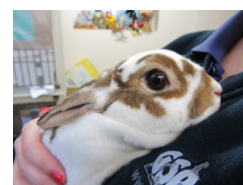
www.justgiving.com/gspca



We are still looking for a premises to open a Charity Shop. It costs over £600,000 a year to run the GSPCA and we are always looking at new ways to help raise funds for the Shelter.

If you can help please contact the GSPCA Manager Steve Byrne on 01481 257261 or email -

stevebyrne@gspca.org.gg



One way that you can help us acquire equipment which will assist us in caring for the many animals at the shelter is via our Amazon wish list which can be viewed online at the following address:

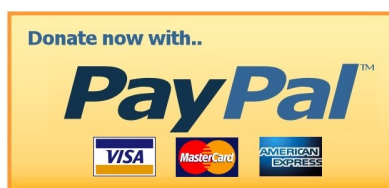
www.amazon.co.uk/registry/wishlist/25MJPPDAGXHL1

How to Make a Donation

You can make a donation to the GSPCA via any of the following methods:

- Visit the GSPCA website at www.gspca.org.gg and donate online via PayPal or Just Giving.
- Complete a form and post it to the animal shelter.
- Visit the Animal Shelter and complete the paperwork on site.

- Make a monthly donation by completing a standing order form (available online or via the GSPCA by calling us on 257261).
- Or by post (address page 20).



Gert the GSPCA Duck



You may not like this weather, but we are having a wonderful time playing in the mud at the rain! You can see many of my quacks on my twitter feed, which you can follow me on at **@Gert_GSPCA_duck** Here are some quack-tastic jokes to get you through the winter!!

Q: What does a duckling carry his school books in?

A: His Quack-pack!

Q: Why do ducks watch the news?

A: To see the Feather Forecast!

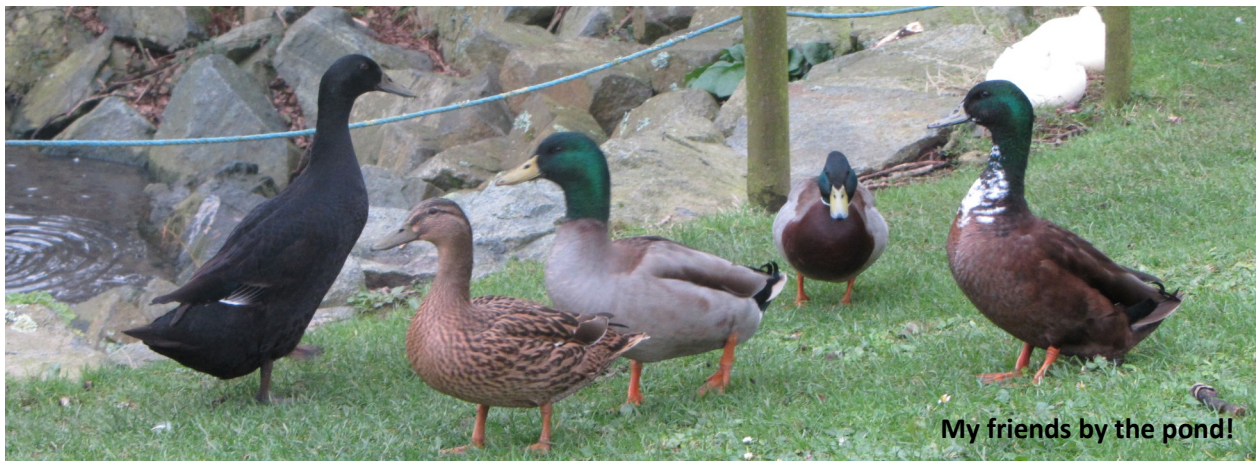
Q: What do you call it when it rains Chickens and Ducks?

A: Foul weather!

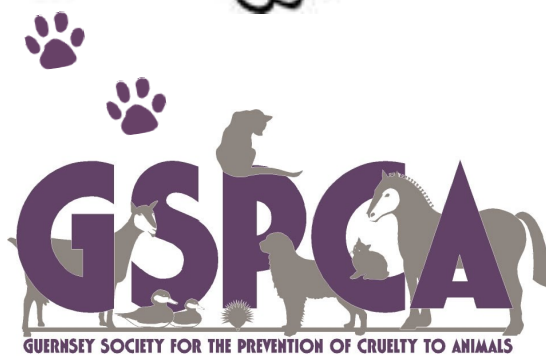
Q: What did the duck detective say to his partner?

A: I hope we Quack this case....!

If you would like to tell me your stories about ducks and other animals, or even send pictures to the shelter, I have my own e-mail address, which is **gert@gspca.org.gg**



My friends by the pond!



Guernsey Society for the Prevention of
Cruelty to Animals,
Les Fiers Moutons,
St Andrew,
Guernsey, GY6 8UD
Phone: 01481 257261
Fax: 01481 251147
E-mail: admin@gspca.org.gg



Thank you for
your continued
support.